

NEW **ON
YX**
Collection
(Pages 4-8)

Group Collection

Fall/Winter 2020

Ropa Médica

DISTRIBUCION GRATUITA

ROPA MEDICA ONLINE S.R.L.
Pedidos Corporativos: 621-42545
Distribuidor Autorizado para Bolivia de las Marcas



healing hands®

New Caps and Masks Pages 38-41



ONYX



HH Works



Purple Label

The Story of Healing Hands

Messages of appreciation and encouragement for healers are “hidden” in the scrubs that Bansi Lakhani has been creating for over 10 years. His passion is to make the best fitting garments with luxurious fabrics that work as hard as the people who wear them. Healing Hands has become a leader in the medical uniform industry because of his focus on quality, comfort and easy care.

Bansi suffered a massive heart attack that required major heart surgery when he was only 43 years old. Without the help of the dedicated and caring nurses, he believed that he might not have survived. He vowed to give back to the “angels” that saved him. The experience convinced him that the ill-fitting scrubs made of scratchy fabric needed a major upgrade. He knew with his experience and expertise in designing clothing, he could create a collection of scrubs that were comfortable and fashionable with features like stretchy-breathable fabrics, extra pockets in the right places, waistbands that stay-up without pinching and flattering styles for all body types.

Today, caregivers throughout the world love to wear Healing Hands. It was possible because he just wanted to find a way to thank them. If you look inside the scrubs, he does just that with messages like – “Thank you for being a healer,” “Every caregiver is a blessing,” and “You make the world better.” Bansi Lakhani is an inspiration and he will always be known for Healing Hands scrubs that truly came from his heart.





Blue Label



HH 360°



The White Coat

Table of Contents

Our Story	2
ONYX	4
HH Works	8
Purple Label	14
Blue Label	21
Knits	22
HH 360°	24
The White Coat	30
Caps & Masks	38
Measurement Chart	42



**Connect
with Us!**



888-858-8600



201-623-2506



@hhscrubs



@HealingHandsScrubs



hhscrubs.com



Wouldn't it be wonderful if your scrubs looked great and were comfy like your favorite t-shirt?

Our design team thought so. They developed **KnitRX**, an innovative new fabric that is exclusively made by Healing Hands for healthcare workers who want more comfortable uniforms.

The ONYX collection is about luxurious performance wear. The scrubs are so smooth, so stretchy and so easy-to-care-for that it will make your t-shirts jealous and wish they had a medical degree.

There are no other scrubs in the market that have a professional knit fabric. None. Go ahead and create the next trend with ONYX by Healing Hands.



easy
care



luxurious
knit fabric



modern
styling



4-way
stretch knit



Ropa Médica

NEW
Available
October



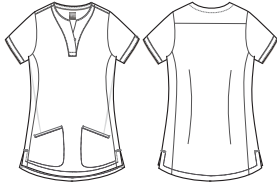
NEW!

**2400
ALEX TOP**

XS - 3X (Body Length: 27")

2 Pockets

Stylish Neckline



NEW!

**2402
AVERIE TOP**

XS - 3X (Body Length: 27")

3 Pockets

Comfort V-Neck



NEW!

**9401
ATHENA PANT**

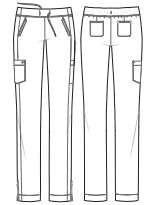
XS - 3X (Inseam: 29½')

XSP - XLP (Inseam: 28")

XST - XLT (Inseam: 31½')

5 Pockets

Convertible Drawstring Pant



Narrow Leg 12½"

Ropa Médica

Black			
Navy			
Pewter			
Royal			
Ceil			
Wine			
Maple Red	N/A		

ON
YX



Ropa Médica

NEW
Available
October

2402 | AVERIE TOP
2400 | ALEX TOP

HH WORKS

Women's Collection



Ropa Médica

2500 MONICA TOP

XXS - 5X (Body Length: 26½")

3 Pockets

Comfort V-Neck



2525 MADISON TOP

XXS - 5X (Body Length: 26")

3 Pockets

Mock Wrapped Neck



4001 FATIMA TOP

XXS - 5X (Body Length: 30")

Not available in 1x

2 Pockets

Long Sleeve Top



Ropa Médica

Black			
Navy			
Pewter			
Royal			
Ceil			
Eggplant			N/A
Wine			N/A
Caribbean			N/A
Galaxy Blue			N/A
Teal			
Red			N/A
White			N/A
Hunter			
Khaki		N/A	N/A
Grape		N/A	N/A
Olive		N/A	N/A
Carnation Pink		N/A	N/A

HH WORKS WOMEN'S

MATERNITY

2510 MILA TOP

XS - 3X (Body Length: 27½")

2 Pockets

Maternity Top

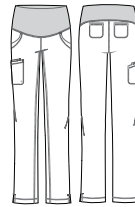


9510 ROSE PANT

XS - 3X (Inseam: 31")
XSP - XLP | Available December

5 Pockets

Maternity Pant



5500 MEGAN JACKET

XXS - 5X (Body Length: 27")

3 Pockets

Snap Up Jacket



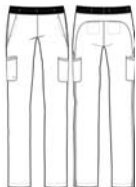
Ropa Médica

Black			
Navy			
Pewter			
Royal			
Ceil	Available in December	Available in December	
Eggplant	N/A		
Wine	Available in December	Available in December	
Caribbean	N/A	N/A	
Galaxy Blue	N/A	N/A	
Teal	N/A	N/A	
Red	N/A	N/A	
White	N/A	N/A	
Hunter	N/A	N/A	
Khaki	N/A	N/A	
Grape	N/A	N/A	
Olive	N/A	N/A	
Carnation Pink	N/A	N/A	

NEW!

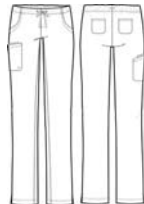
9500 RACHEL PANT
XXS - 5X (Inseam: 31½")
XXSP - 3XP (Inseam: 29½")
XST - 2XT (Inseam: 33½")

6 Pockets
 Yoga Pant



9560 REBECCA PANT
XXS - 5X (Inseam: 31½")
XXSP - 3XP (Inseam: 29½")
XST - 2XT (Inseam: 33½")

5 Pockets
 Comfort Drawstring Pant

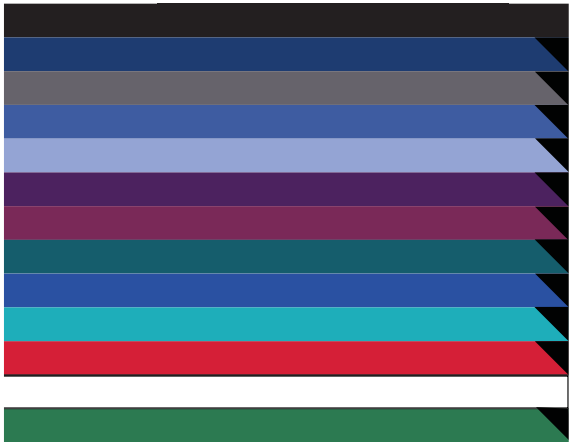


9575 RENEE PANT
XXS - 3X (Inseam: 28")
XSP - 2XP (Inseam: 27")
XST - XLT (Inseam: 29½")

5 Pockets
 Jogger Pant



Ropa Médica



N/A
 N/A
 N/A
 N/A



Available in October
Available in October
Available in October
Available in October
Available in October
N/A
Available in October
N/A
N/A
N/A
N/A
N/A
N/A
N/A
N/A
N/A
N/A
N/A

91% polyester / 9% spandex

HH WORKS

Men's Collection



Ropa Médica

**2590
MATHEW TOP**
XS - 5X (Body Length: 30")

3 Pockets
Comfort V-Neck



**2591
MASON TOP**
XS - 5X (Body Length: 30")

1 Pocket
One Pocket Top



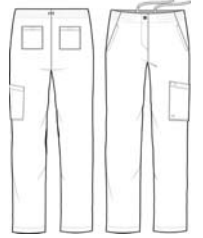
**5590
MICHAEL JACKET**
XS - 5X (Body Length: 30")

4 Pockets
Warm-Up Jacket



**9590
RYAN PANT**
XS - 5X (Inseam: 32")
XSS - 3XLS (Inseam: 29½")
ST - 2XT (Inseam: 35")

5 Pockets
Drawstring Pants



Ropa Medica

Black				
Navy				
Pewter				
Royal				
Ceil				
Eggplant	N/A	N/A	N/A	N/A
Wine				
Caribbean		N/A		
Galaxy Blue		N/A	N/A	
Teal		N/A		
Red	N/A	N/A	N/A	N/A
White		N/A		
Hunter		N/A		
Khaki		N/A		
Grape	N/A	N/A	N/A	N/A
Olive	N/A		N/A	



Hello Gorgeous - that's what some women exclaim as they get dressed in our Purple Label scrubs collection.

Some say our Tori yoga pants are the most comfortable scrubs they've ever worn. Some say the Juliet top is the best fitting. Then some just say, "Gorgeous scrubs."

Healthcare workers across the world are happy to give us glowing 5-star reviews like - "This fabric is durable, holds its color through hot washes, and is very soft. It doesn't wrinkle if you leave it in the dryer overnight. After nearly 3 months of regular wash and wear, it still looks brand new."

We suggest you follow their recommendations. After all, it's good to take advice from a medical expert that has experience wearing uniforms. They know that Purple Label is designed to make you feel good and look great.



easy
care



high performance
stretch



stylish
fit



style
forward



Ropa Médica

PURPLE LABEL

2167 JANE TOP

XXS - 5X (Body Length: 26½")

2 Pockets

Stylish Y-Neck

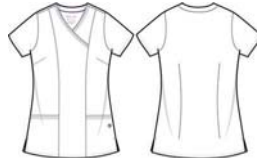


2172 JORDAN TOP

XS - 3X (Body Length: 26½")

2 Pockets

Mock-Wrap Neck



2245 JULIET TOP

XXS - 5X (Body Length: 27")

2 Pockets

Comfort V-Neck



2270 JESSI TOP

XS - 3X (Body Length: 26½")

2 Pockets

Comfort V-Neck



Ropa Médica

Black				N/A
Navy				N/A
Pewter				N/A
Royal				
Ceil				N/A
Eggplant				N/A
Wine				N/A
Caribbean				N/A
Galaxy Blue		N/A		N/A
Teal		N/A		N/A
Red		N/A		
White				N/A
Hunter		N/A		N/A
Khaki	N/A	N/A		N/A
True Grape	N/A	N/A		N/A
Turquoise	N/A	N/A		N/A
Shocking Pink	N/A	N/A		N/A
Heather Gray	N/A	N/A	N/A	N/A

PURPLE LABEL

NEW!

2278 JASMIN TOP

XS - 5X (Body Length: 27")

3 Pockets

Comfort V-Neck

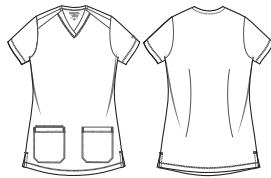


2320 JILL TOP

XS - 5X (Body Length: 27")

2 Pockets

Comfort V-Neck



2339 JEAN TOP

XS - 3X (Body Length: 27")

2 Pockets

Heart Zipper Top



2341 JENI TOP

XXS - 3X (Body Length: 27")

3 Pockets

Next-Gen Athleisure Top



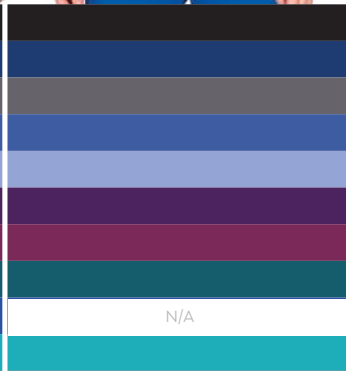
Ropa Médica



N/A



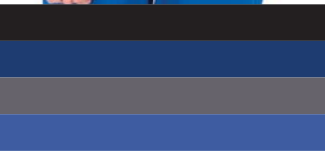
N/A
N/A
N/A
N/A
N/A



N/A



N/A
N/A
N/A
N/A
N/A
N/A
N/A



N/A
N/A
N/A
N/A
N/A
N/A
N/A
N/A
N/A
N/A
N/A



N/A
N/A
N/A
N/A
N/A

77% polyester / 20% rayon / 3% spandex

PURPLE LABEL

5063 DAISY JACKET

XS - 5X (Body Length: 27½")

2 Pockets

Snap-Up Jacket

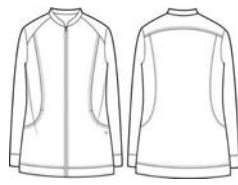


5038 DAKOTA JACKET

XS - 3X (Body Length: 26½")

2 Pockets

Zip-Up Jacket

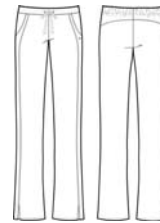


9095 TAYLOR PANT

XXS - 5X (Inseam: 31")
XSP - 2XP (Inseam: 28½")
XST - XLT (Inseam: 33")

2 Pockets

Comfort Drawstring Pant

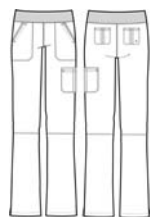


9133 TORI PANT

XXS - 5X (Inseam: 30½")
XXSP - 3XP (Inseam: 28½")
XST - 2XT (Inseam: 33½")

5 Pockets

Yoga Pant



Ropa Médica

Black				
Navy				
Pewter				
Royal				
Ceil				
Eggplant		N/A		
Wine		N/A		
Caribbean		N/A		
Galaxy Blue		N/A		
Teal		N/A		
Red		N/A		
White				
Hunter		N/A		
Khaki	N/A	N/A	N/A	
True Grape	N/A	N/A	N/A	
Turquoise	N/A	N/A	N/A	
Shocking Pink	N/A	N/A	N/A	
Gray	N/A	N/A	N/A	
Heather Gray	N/A	N/A	N/A	N/A

PURPLE LABEL

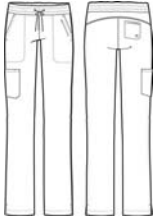
NEW!

9139 TANYA PANT

XXS - 5X (Inseam: 31½")
XXSP - 2XP (Inseam: 29½")
XST - XLT (Inseam: 33½")

5 Pockets

Comfort Drawstring Pant



9141 TONI PANT

XXS - 3X (Inseam: 31")
XSP - 2XP (Inseam: 28½")
XST - XLT (Inseam: 33½")

4 Pockets

Next-Gen Athleisure Pant



9181 TAMARA PANT

XXS - 5X (Inseam: 31")
XSP - 2XP (Inseam: 29½")
XST - XLT (Inseam: 33")

4 Pockets

Comfort Drawstring Pant

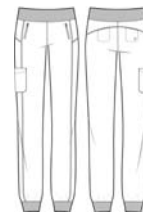


9233 TARA JOGGER PANT

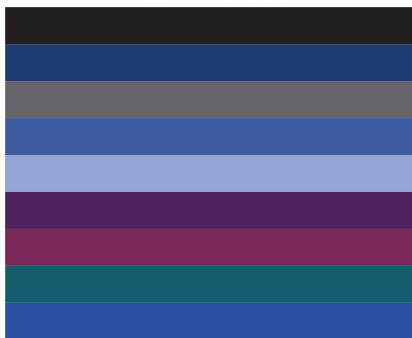
XS - 3X (Inseam: 29")
XSP - XLP (Inseam: 27")
XST - XLT (Inseam: 31½")

5 Pockets

Jogger Pant

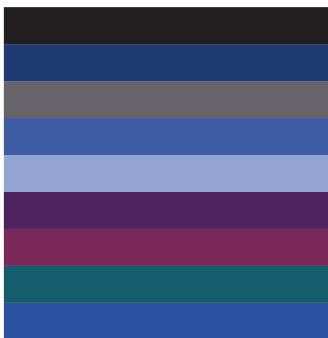


Ropa Médica

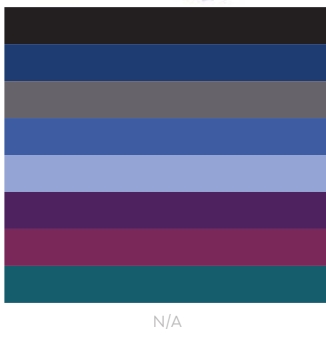


N/A
N/A

N/A
N/A
N/A
N/A
N/A
N/A
N/A

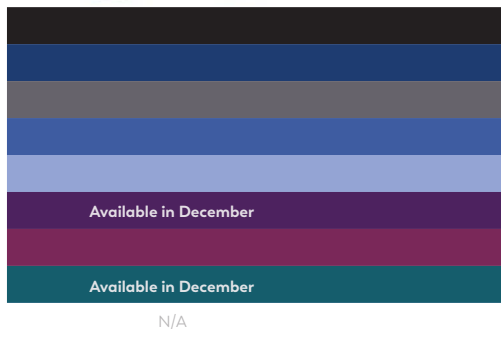


N/A
N/A
N/A
N/A
N/A
N/A



N/A
N/A

N/A
N/A
N/A
N/A
N/A



Available in December

Available in December

N/A

Available in December

Available in December

Available in December

Available in December

N/A
N/A
N/A
N/A
N/A
N/A

77% polyester / 20% rayon / 3% spandex

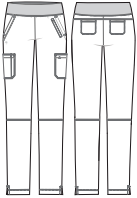
PURPLE LABEL

9134 TYRA PANT

XXS - 5X (Inseam: 30")
XSP - 2XP (Inseam: 28")
XST - XLT (Inseam: 32½")

7 Pockets

Slim Yoga Pant



NEW
Available
October

Ropa Médica

Black	
Navy	
Pewter	
Royal	
Ceil	
Wine	
White	

Slim Leg 13½"



20 77% polyester
20% rayon / 3% spandex

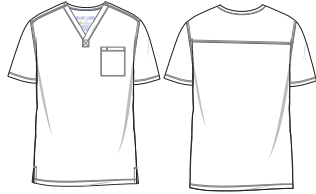
BLUE LABEL

2223 JAMES TOP

S - 5X (Body Length: 30")

1 Pocket

Comfort Y-Neckline

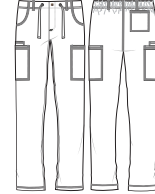


9124 DYLAN PANT

S - 5X (Inseam: 32")

6 Pockets

Drawstring Waist



Ropa Médica

Black
Navy
Pewter
Royal
Ceil

77% polyester / 20% rayon / 3% spandex

Knits

5047 MELISSA TEE

XXS - 5X (Body Length: 26½")

Long Sleeve Tee

57% Cotton
38% Polyester
5% Spandex



5048 MADELINE TEE

XS - 3X (Body Length: 27")

Short Sleeve Tee

57% Cotton
38% Polyester
5% Spandex



5051 MACKENZIE TEE

XXS - 3X (Body Length: 25")

Long Sleeve Tee
with Thumb-Holes

48% Polyester
48% Rayon
4% Spandex



5077 BECCA JACKET

XXS - 5X (Body Length: 27")

3 Pockets

Comfort V-Neck

92% Polyester
8% Spandex



Ropa Médica

Black				
Navy		N/A		
Pewter		N/A		
Royal		N/A		
Ceil		N/A		
Wine	N/A	N/A		
Teal	N/A	N/A		
White				
Heather Gray	N/A	N/A		
Carnation Pink		N/A		

AVAILABLE OCTOBER

NEW!

**5300
BROOKLYN JACKET**

XXS - 3X (Body Length: 27½")

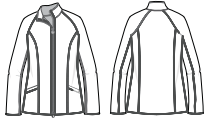
4 Pockets

Reversible Jacket

Outside: 100% Polyester

Inside: 100% PolyFleece

Heather Gray: 92% Polyester 8% Spandex



Ropa Médica

Knits



REVERSIBLE
5300 | BROOKLYN JACKET



Ropa Médica



Ropa Médica

Want to be cool? We suggest hanging out with HH 360°

Be one of the cool kids and feel the difference of our ultimate 360° fit. The textured fabric moves and stretches with every bend and turn. It's the performance that many athletic teams demand on the field.

We don't want you to sweat about the small stuff. You will stay dry and confident because the features that are built-in to every garment. They are wrinkle and shrink resistant and so much more.

Moisture wicking. Check. Breathable. Check. Easy care and comfortable. Check. These styles check all the boxes. Pop them in the washer and dryer, day after day and you'll wonder what it was like before you were cool.



**easy
care**



**360
stretch**



breathable



**moisture
wicking**

HH360^o WOMEN'S

NEW!

2254 SONIA TOP

XS - 3X (Body Length: 26")

2 Pockets

Zipper Neck Top



2264 SLOAN TOP

XS - 3X (Body Length: 26½")

3 Pockets

Updated V-Neck
Non-reflective Details



2284 SERENA TOP

XS - 3X (Body Length: 26½")

3 Pockets

Comfort V-Neck Top



5067 CARLY JACKET

XS - 3X (Body Length: 26½")

4 Pockets

Knitted-Ribbed Collar
Zipper Pockets



Ropa Medica

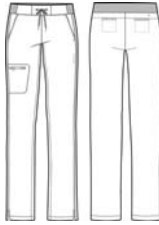
Black				
Navy				
Pewter				
Royal				
Ceil	N/A			N/A
Wine				N/A
Caribbean	N/A		N/A	N/A
Galaxy blue	N/A		N/A	N/A
White	N/A	N/A		N/A

9151 NISHA PANT

XS - 3X (Inseam: 31½")
XSP - XLP (Inseam: 29")
XST - XLT (Inseam: 33½")

5 Pockets

Drawstring Pant

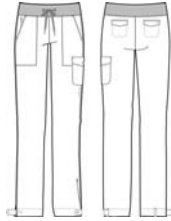


9154 NIKKI PANT

XS - 3X (Inseam: 31")
XSP - XLP (Inseam: 28½")
XST - XLT (Inseam: 33")

6 Pockets

Button Jogger Pant

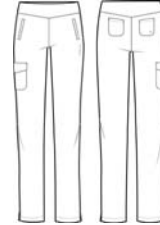


9155 NAOMI PANT

XS - 3X (Inseam: 31")
XSP - XLP (Inseam: 28")

5 Pockets

Yoga Pants
 Non-reflective Details



Ropa Médica

Not available in petite or tall	Not available in petite or tall	
Not available in petite or tall	N/A	
Not available in petite or tall	Not available in petite or tall	
	Not available in petite or tall	N/A

1414360°

Men's Collection

Ropa Médica



2380 STEVEN TOP

XS - 3X (Body Length: 29½")

3 Pockets

Comfort V-Neck



9171 NOAH PANT

XS - 3X (Inseam: 32")
XSS - XLS (Inseam: 29½")

6 Pockets

Drawstring Pant



Ropa Médica

Black

Navy

Pewter

Royal



Ropa Médica

Healthcare professionals recognize the power of the white coat.

The scrubs industry sees the lab coat as a cover-up. We don't. We see it as a confidence builder. Wearing a great looking white coat projects an image of one who has earned the right to be a trusted caregiver.

The White Coat collection by Healing Hands is designed to appeal to the professional, the modernist and the minimalist. The styling, fit and fabric technology result in the best "topcoats" in the market. The features found in Italian high-quality suiting is translated into our lab coats and the difference is easy to see.

If you want soil-resistant and fluid barrier, we have that. It's an important consideration for the unexpected things that happen in the demanding medical profession. We make it easy to look crisp and clean while doing your rounds. That is the power of the White Coat collection.



Ropa Médica

the white coat
the minimalist



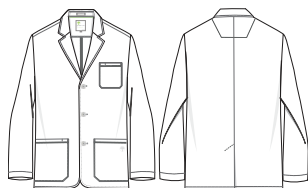
Ropa Médica

5150
LEO LAB COAT

XXS - 5X (Body Length: 30½")
*XSL - 2XL (Body Length: 33")

- 2 Inside Pockets
- 3 Outside Pockets

Relaxed Fit

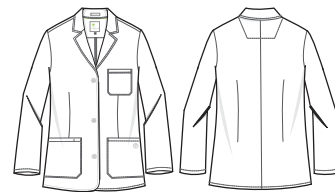


5160
FLO LAB COAT

XXS - 5X (Body Length: 29")
*XST - 2XT (Body Length: 30½")

- 2 Inside Pockets
- 3 Outside Pockets

Relaxed Tailored Fit



the white coat
the minimalist



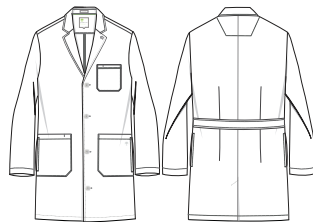
Ropa Médica

**5151
LUKE LAB COAT**

XXS - 5X (Body Length: 38")
*XSL - 2XL (Body Length: 42½")

- 2 Inside Pockets
- 3 Outside Pockets

Relaxed Fit

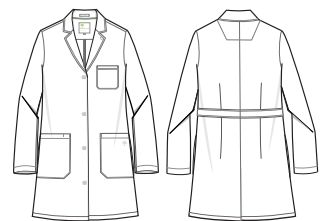


**5161
FAYE LAB COAT**

XXS - 5X (Body Length: 37½")
*XST - 2XT (Body Length: 39½")

- 2 Inside Pockets
- 3 Outside Pockets

Relaxed Fit



*Longs & Talls Available December

97% polyester / 3% spandex

the white coat

the minimalist



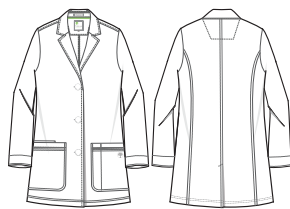
5053 FAITH LAB COAT

XXS - 5X (Body Length: 32")

- 1 Inside Pocket
- 2 Outside Pockets

Relaxed Tailored Fit

AVAILABLE IN BLACK

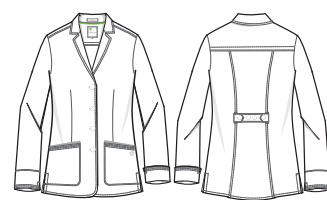


5064 FELICITY LAB COAT

XS - 5X (Body Length: 29")

- 1 Inside Pocket
- 2 Outside Pockets

Relaxed Tailored Fit



the white coat
the modernist



Ropa Médica

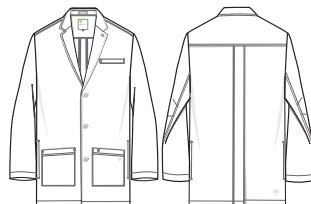
5100
LOGAN LAB COAT

XS - 5X (Body Length: 35½")

2 Inside Pockets

3 Outside Pockets

Relaxed Tailored Fit



5101
FIONA LAB COAT

XXS - 5X (Body Length: 35")

3 Outside Pockets

Relaxed Tailored Fit



77% polyester / 18% rayon / 3% spandex

the white coat
the professional



Ropa Médica



Fluid barrier
&
Soil Resistant



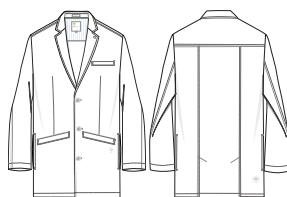
Fluid barrier
&
Soil Resistant

**5103
LYNDON LAB COAT**

36 - 52 (Body Length: 39")
40L - 50L (Body Length: 43")

- 2 Inside Pockets
- 3 Outside Pockets

Relaxed Tailored Fit

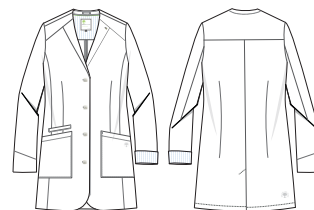


**5102
FARRAH LAB COAT**

0 - 18 (Body Length: 35")

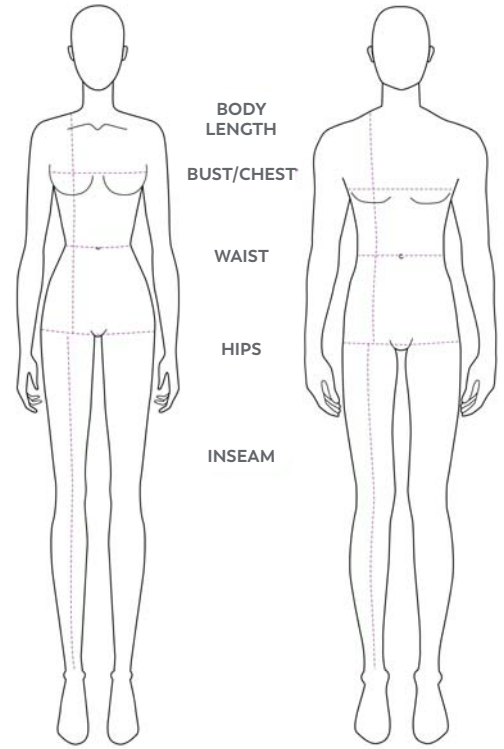
- 1 Inside Pocket
- 3 Outside Pockets

Relaxed Tailored Fit



THE WHITE COAT

SIZE CHART



BUST/CHEST

Place measuring tape under armpits and extend the tape around the broadest section of your chest.

WAIST

Place tape around your natural waist line.

HIPS

Stand with your feet 2-4 inches apart and measure around the fullest part of your hips.

BODY LENGTH

Hold the measuring tape at the highest point on your shoulder and drop it down to your lower back.



WOMEN'S

SIZE	XXS	XS	S	M	L	XL	2X	3X	4X	5X
BUST	31-32"	33-34"	35-36"	37-38"	39-40"	41-44"	45-48"	49-52"	53-56"	57-60"
WAIST	23-24"	25-26"	27-28"	29-30"	31-33"	34-36"	37-40"	41-44"	45-48"	49-52"
HIP	34-35"	36-37"	38-39"	40-41"	42-44"	45-47"	48-51"	52-55"	56-59"	60-63"

MEN'S

SIZE	XXS	XS	S	M	L	XL	2X	3X	4X	5X
CHEST	28-29"	30-32"	34-36"	38-40"	42-44"	46-48"	50-52"	54-56"	58-60"	62-64"
WAIST	22-23"	24-26"	28-30"	32-34"	36-38"	40-42"	44-46"	48-50"	52-54"	56-58"
HIP	28-29"	30-32"	34-36"	38-40"	42-44"	46-48"	50-52"	54-56"	58-60"	62-64"



WOMEN'S

SIZE	0-0	0	2	4	6	8	10	12	14	16	18
BUST	31.5"	32.5"	33.5"	34.5"	35.5"	36.5"	37.5"	39"	40.5"	42"	44"
WAIST	23"	24"	25"	26"	27"	28"	29"	30.5"	32"	33.5"	35.5"
HIP	34"	35"	36"	37"	38"	39"	40"	41.5"	43"	44.5"	46.5"

MEN'S

SIZE	34	36	38	40	42	44	46	48	50	52
CHEST	34"	36"	38"	40"	42"	44"	46"	48"	50"	52"
WAIST	28"	30"	32"	34"	36"	38"	40"	42"	44"	46"
HIP	34"	36"	38"	40"	42"	44"	46"	48"	50"	52"

NEW

Caring is healing

Ropa Médica

1000 | SAWYER ADJUSTABLE TIE-BACK SKULL CAP

CAPS



Propa Médica

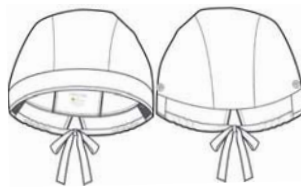
1000 SAWYER ADJUSTABLE TIE-BACK SKULL CAP

One Size

Buttons for mask ear loop

Elastic for better fit

French terry moisture wicking sweatband

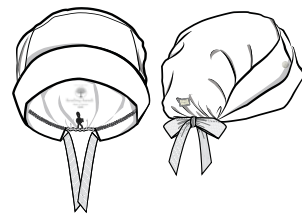


1002 SAGE BOUFFANT SCRUB CAP

One Size

Button for mask ear loop

Toggle for fit adjustment



Available in



Available in



BASE FABRIC: 77% POLYESTER / 20% RAYON / 3% SPANDEX
TERRY SWEATBAND: 80% COTTON / 20% POLYESTER

BASE FABRIC: 77% POLYESTER / 20% RAYON / 3% SPANDEX

NEW

Ropa Médica

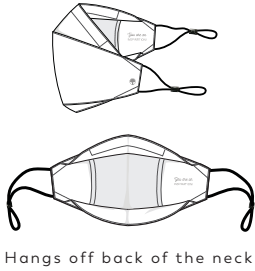
1500 | SKYLER 3D WASHABLE CLOTH MASK

MASKS



**1502
SKYLER 3D
WASHABLE CLOTH MASK**

One Size
Washable & Reusable
Pocket to add
optional filter



Hangs off back of the neck

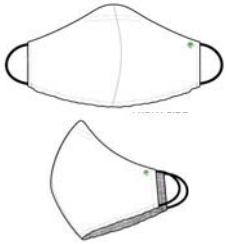
- Available in
- BLACK
 - CARIBBEAN
 - CEIL
 - HEATHER GRAY
 - HUNTER
 - NAVY
 - ROYAL
 - WINE

BASE FABRIC: 77% POLYESTER / 20% RAYON / 3% SPANDEX



**1500PRT
SHAY WASHABLE
CLOTH MASK**

One Size
Washable & Reusable
Elastic below chin for snug fit



Prints are Randomly Assorted and Updated Each Season

3-pack of assorted print masks (sold as 1 unit):

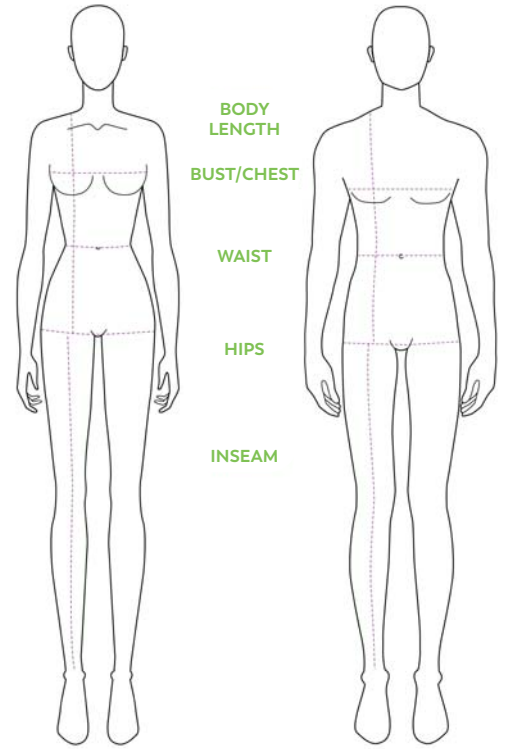
- 3 Masks
- 1 Free Ear Guard
- Plastic Gift Pouch



OUTER LAYER: 96% POLYESTER / 4% SPANDEX
INNER LAYER: 100% COTTON KNIT

HH WORKS

SIZE CHART



BUST/CHEST

Place measuring tape under armpits and extend the tape around the broadest section of your chest.

WAIST

Place tape around your natural waist line.

HIPS

Stand with your feet 2-4 inches apart and measure around the fullest part of your hips.

BODY LENGTH

Hold the measuring tape at the highest point on your shoulder and drop it down to your lower back.

HHWORKS WOMEN'S

SIZE	NUMERIC SIZES	BUST	WAIST	HIP	INSEAM	INSEAM PETITE	INSEAM TALL	HEIGHT REGULAR	HEIGHT PETITE	HEIGHT TALL
XXS	00	30"-31"	21"-23"	32"-33"	31"	29"	33"	5'3.5"-5'7"	4'10"-5'3"	5'8"-6'2"
XS	0-2	32"-33"	24"-25"	34"-35"	31"	29"	33"	5'3.5"-5'7"	4'10"-5'3"	5'8"-6'2"
S	4-6	34"-35"	26"-27"	36"-37"	31"	29"	33"	5'3.5"-5'7"	4'10"-5'3"	5'8"-6'2"
M	8-10	36"-37"	28"-30"	38"-40"	31"	29"	33"	5'3.5"-5'7"	4'10"-5'3"	5'8"-6'2"
L	12-14	38"-40"	31"-33"	41"-43"	31"	29"	33"	5'3.5"-5'7"	4'10"-5'3"	5'8"-6'2"
XL	16-18	41"-43"	34"-36"	44"-46"	31"	29"	33"	5'3.5"-5'7"	4'10"-5'3"	5'8"-6'2"
1X	20	44"-46"	36.5"-38.5"	46.5"-48.5"	31"	29"	33"	5'3.5"-5'7"	4'10"-5'3"	5'8"-6'2"
2X	21-22	47"-49"	39"-41"	49"-51"	31"	29"	33"	5'3.5"-5'7"	4'10"-5'3"	5'8"-6'2"
3X	23-24	50"-52"	42"-44"	52"-54"	31"	29"	33"	5'3.5"-5'7"	4'10"-5'3"	5'8"-6'2"
4X	25-26	53"-55"	45"-48"	55"-58"	31"	29"	33"	5'3.5"-5'7"	4'10"-5'3"	5'8"-6'2"
5X	27-28	56"-59"	49"-52"	56"-62"	31"	29"	33"	5'3.5"-5'7"	4'10"-5'3"	5'8"-6'2"

HHWORKS MEN'S

SIZE	NUMERIC SIZES	CHEST	WAIST	HIP	INSEAM	INSEAM PETITE	INSEAM TALL	HEIGHT REGULAR	HEIGHT PETITE	HEIGHT TALL
XS	30-32	32"-34"	27"-28"	32"-34"	32"	29.5"	35"	5'9"-6'1"	5'6"-5'8"	6'2"-6'5"
S	34-36	36"-37"	29"-31"	35"-37"	32"	29.5"	35"	5'9"-6'1"	5'6"-5'8"	6'2"-6'5"
M	38-40	38"-40"	32"-34"	38"-40"	32"	29.5"	35"	5'9"-6'1"	5'6"-5'8"	6'2"-6'5"
L	42-44	42"-44"	35"-38"	41"-44"	32"	29.5"	35"	5'9"-6'1"	5'6"-5'8"	6'2"-6'5"
XL	46-48	46"-48"	39"-42"	45"-48"	32"	29.5"	35"	5'9"-6'1"	5'6"-5'8"	6'2"-6'5"
2X	50-52	50"-52"	43"-46"	49"-52"	32"	29.5"	35"	5'9"-6'1"	5'6"-5'8"	6'2"-6'5"
3X	54-56	54"-56"	47"-50"	53"-56"	32"	29.5"	35"	5'9"-6'1"	5'6"-5'8"	6'2"-6'5"
4X	58-60	58"-60"	51"-54"	57"-60"	32"	29.5"	35"	5'9"-6'1"	5'6"-5'8"	6'2"-6'5"
5X	62-64	62"-64"	55"-58"	61"-64"	32"	29.5"	35"	5'9"-6'1"	5'6"-5'8"	6'2"-6'5"

HEALING HANDS

SIZE CHART

(White Coat Size Chart on Page 37)

BUST/CHEST

Place measuring tape under armpits and extend the tape around the broadest section of your chest.

WAIST

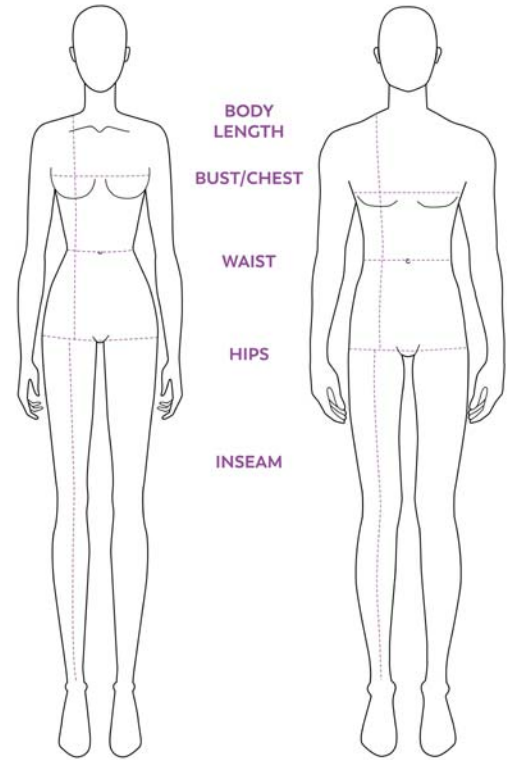
Place tape around your natural waist line.

HIPS

Stand with your feet 2-4 inches apart and measure around the fullest part of your hips.

BODY LENGTH

Hold the measuring tape at the highest point on your shoulder and drop it down to your lower back.



HHWORKS WOMEN'S

SIZE	NUMERIC SIZES	BUST	WAIST	HIP	INSEAM	INSEAM PETITE	INSEAM TALL	HEIGHT REGULAR	HEIGHT PETIT	HEIGHT TALL
XXS	00	27-30"	21-24"	31-34"	31	29	33	5'3.5"-5'7"	4'10"-5'3"	5'8"-6'2"
XS	0-2	30-33"	24-26"	34-36"	31	29	33	5'2.5"-5'7"	4'10"-5'3"	5'8"-6'2"
S	4-6	33-35"	26-28"	36-38"	31	29	33	5'3.5"-5'7"	4'10"-5'3"	5'8"-6'2"
M	8-10	35-37"	28-30"	38-40"	31	29	33	5'3.5"-5'7"	4'10"-5'3"	5'8"-6'2"
L	12-14	37-40"	30-33"	40-43"	31	29	33	5'3.5"-5'7"	4'10"-5'3"	5'8"-6'2"
XL	16-18	40-43"	33-36"	43-46"	31	29	33	5'3.5"-5'7"	4'10"-5'3"	5'8"-6'2"
2X	20-22	43-47"	36-40"	46-50"	31	29	33	5'3.5"-5'7"	4'10"-5'3"	5'8"-6'2"
3X	23-24	47-51"	40-44"	50-54"	31	29	33	5'3.5"-5'7"	4'10"-5'3"	5'8"-6'2"
4X	25-26	51-55"	44-48"	54-58"	31	29	33	5'3.5"-5'7"	4'10"-5'3"	5'8"-6'2"
5X	27-28	55-59"	48-52"	58-62"	31	29	33	5'3.5"-5'7"	4'10"-5'3"	5'8"-6'2"

HHWORKS MEN'S

SIZE	NUMERIC SIZES	CHEST	WAIST	HIP	INSEAM	INSEAM PETITE	INSEAM TALL	HEIGHT REGULAR	HEIGHT PETITE	HEIGHT TALL
XS	30-32	32"-34"	27"-28"	32"-34"	32"	29.5"	35"	5'9"-6'1"	5'6"-5'8"	6'2"-6'5"
S	34-36	36"-37"	29"-31"	35"-37"	32"	29.5"	35"	5'9"-6'1"	5'6"-5'8"	6'2"-6'5"
M	38-40	38-40"	32"-34"	38"-40"	32"	29.5"	35"	5'9"-6'1"	5'6"-5'8"	6'2"-6'5"
L	42-44	42"-44"	35"-38"	41"-44"	32"	29.5"	35"	5'9"-6'1"	5'6"-5'8"	6'2"-6'5"
XL	46-48	46"-48"	39"-42"	45"-48"	32"	29.5"	35"	5'9"-6'1"	5'6"-5'8"	6'2"-6'5"
2X	50-52	50"-52"	43"-46"	49"-52"	32"	29.5"	35"	5'9"-6'1"	5'6"-5'8"	6'2"-6'5"
3X	54-56	54"-56"	47"-50"	53"-56"	32"	29.5"	35"	5'9"-6'1"	5'6"-5'8"	6'2"-6'5"
4X	58-60	58"-60"	51"-54"	57"-60"	32"	29.5"	35"	5'9"-6'1"	5'6"-5'8"	6'2"-6'5"
5X	62-64	62"-64"	55"-58"	61"-64"	32"	29.5"	35"	5'9"-6'1"	5'6"-5'8"	6'2"-6'5"

NEW
CAPS

Ropa Médica

Ropa Médica

DISTRIBUCION GRATUITA

ROPA MEDICA ONLINE S.R.L.

Pedidos Corporativos: **621-42545**

Distribuidor Autorizado para Bolivia de las Marcas

