



*Ropa Médica*

**DISTRIBUCION GRATUITA**

**ROPA MEDICA ONLINE S.R.L.**  
Pedidos Corporativos: **621-42545**  
**Distribuidor Autorizado para Bolivia de las Marcas**



**NEW!**  
Men's Colorblock Top  
Cargo Jogger Pant  
P.31

*Ropa Médica*



Front Cover  
**WonderWink PRO**  
6719/5719 Royal  
Women's Dolman Top  
Women's Slim Cargo Jogger Pant

**W123**  
6655/5655 Navy  
Men's Colorblock Top  
Men's Cargo Jogger Pant

Back Cover  
**WonderFLEX**  
6108/5108 Soft Chartreuse  
Verity Women's V-Neck Top  
Faith Women's Multi Pocket Cargo Pant

6655 NAVY  
5655 NAVY

4

WonderWink  
NEO

8

WonderWink  
Aero

16

WonderWink  
for Groups

18

WonderWink  
PRO

26

W123

36

WonderWink  
WonderWORK

50

WonderLAB

52

Layers

58

WonderFLEX  
64 Men's  
70 Prints

75

Four-Stretch  
82 Prints

88

Origins  
100 Prints

106

WonderWink  
Next

110

WonderWink  
HP

116

WonderTECH

120

WonderWink  
Plus

123

Accessories

126

Lab Coats  
132 Fashion Seal  
Healthcare  
Lab Coats

137

WonderWink  
Collegiate  
Scrubs

146

Size Charts /  
Fit Guide



**EXPECT  
COMPLIMENTS.**

# WonderWink™



# NEO

ULTRA-LIGHTWEIGHT  
VENTILATED FABRIC  
SPORTY STYLE

Fashion-forward collection designed for  
exceptional comfort, utility, and endurance.



6121 PEWT  
5121 PEWT



6221 CADE  
5221 CADE

*Ropa Médica*

## NEO FABRIC

Our ultra-lightweight, four-way stretch fabric is enhanced with wicking properties designed to draw moisture away from the body. Paired with pinhole fabric panels for exceptional ventilation, you're guaranteed to keep cool and comfortable.

Flat Fabric Content: 92% Polyester / 8% Spandex

Pinhole Fabric Content: 90% Polyester / 10% Spandex



**6121**  
Women's  
Modified Raglan  
V-Neck Top



**6221**  
Women's  
Wrap Top

*Ropa Médica*



**5121**  
Women's  
Studio  
Cargo Pant

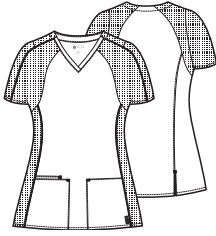


**5221**  
Women's  
Slim Line  
Secret Cargo  
Pant

*Ropa Medica*

# 6121

## Women's Modified Raglan V-Neck Top



Women's Modern Fit and True-Plus Fit  
Flat fabric content:  
92% Polyester / 8% Spandex  
Pinhole fabric content:  
90% Polyester / 10% Spandex



Two roomy front lower top loading pockets with one accessory pocket.



Feminine and flattering slim curved V-neckline.



Modified raglan ventilated sleeves allow for a full range of motion and maximum comfort.

Shoulder loop.

Vertical seaming along sides elongates and slims the waist.



Back princess seaming with added vents at hip.

XS - 3X  
(Size M length: 26 3/4")

black - **BLAC**

pewter - **PEWT**

navy - **NAVY**

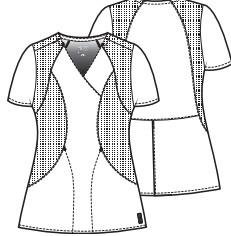
royal - **ROYA**

Cadet Green - **CADE**

Cherry - **CHER**

# 6221

## Women's Wrap Top



Women's Modern Fit and True-Plus Fit  
Flat fabric content:  
92% Polyester / 8% Spandex  
Pinhole fabric content:  
90% Polyester / 10% Spandex



Two roomy front lower hidden pockets.



Mock wrap styling with ventilated paneling for maximum comfort and breathability.

Shoulder loop.

Flattering and slimming princess seaming.



Sporty back ventilated paneling smooths and slims.

Overlapped back vent allows for added movement.

XS - 3X  
(Size M length: 28")

**BLAC**

**PEWT**

**NAVY**

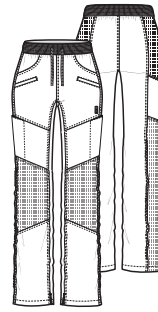
**ROYA**

**CADE**

**CHER**

# 5121

## Women's Studio Cargo Pant



Straight Leg

Women's Modern Fit and True-Plus Fit  
Flat fabric content:  
92% Polyester / 8% Spandex  
Pinhole fabric content:  
90% Polyester / 10% Spandex



Mid-rise fit with rib knit waistband and full drawstring.



Six pocket design: Two front pockets with two stacked welt pockets, and two roomy cargo pockets.



Day-to-play fashion studio straight leg. Fashionable ruching along seamlines and ventilated paneling.

Vented hems.

XS - 3X  
Petite: XS - 3X **P**  
Tall: XS - 3X **T**  
(Size M leg opening: 7 3/4")

**BLAC**

**PEWT**

**NAVY**

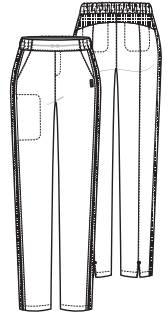
**ROYA**

**CADE**

**CHER**

# 5221

## Women's Slim Line Secret Cargo Pant



Slim Leg

Women's Modern Fit and True-Plus Fit  
Flat fabric content:  
92% Polyester / 8% Spandex  
Pinhole fabric content:  
90% Polyester / 10% Spandex



Mid-rise fit with flattering flat front design and full elastic waistband, internal adjustable drawstring.



Five pocket design: Two front pockets, two back and one zippered secret cargo pocket.



Figure-flattering slim leg. Sleek, vertical seaming elongates and flatter.

Vented hems.

XS - 3X  
Petite: XS - 3X **P**  
(Size M leg opening: 6 3/4")

**BLAC**

**PEWT**

**NAVY**

**ROYA**

**CADE**

**CHER**



# Aero™

Inspire your day with WonderWink's ultra-luxe, feather-weight scrub collection featuring Trend-Right fashion styling, iridescent metal trims, and versatile details.



*Ropa Médica*

6329 PURP  
5329 PURP

6329 GRAP  
5329 GRAP



LUXURY ESSENTIALS  
ENGINEERED FOR MAXIMUM  
PERFORMANCE.



**6129**  
Women's  
Flex Back  
V-Neck Top



**6229**  
Women's  
Flex Racerback  
Wrap Top

*Ropa Médica*



**6329**  
Women's  
Dolman Top



## FIT

Cut close to the body for fluid movement and comfort.

## FABRIC

Featherweight Polyester / Rayon / Spandex blend. Exceptional figure-flattering drape. Easy Care.

## STYLE

Trend-Right and thoughtfully designed with versatility in mind. Wonderwink signature utilities.



**5229**  
Women's  
Flex Racer  
Pull On Pant



**5129**  
Women's  
Flex Utility  
Cargo Pant

Ropa Médica

Inside drawcord  
with stopper



# CARGO JOGGER PANT

We've combined style and comfort into one must-have pant for every professional wardrobe.



5329  
Women's  
Cargo Jogger Pant

Royal Médica



**Aero**™

**PONTE KNIT**



*Ropa Medica*

6919  
Women's  
Ponte Knit  
V-Neck Top





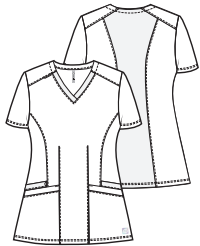
**8919**  
Women's  
Ponte Knit  
Warm Up Jacket

# Ropa Médica

**5919**  
Women's  
Ponte Knit  
Straight  
Leg Pant

# 6129

Women's  
Flex Back V-Neck Top



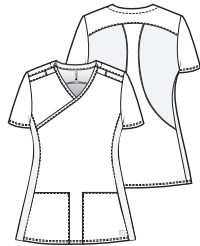
Women's Modern Fit and True-Plus Fit  
76% Polyester/20% Rayon/4% Spandex

- Two front lower top loading double pockets.
- Dyed-to-match flat back rib knit at neck band. Shoulder badge loop.
- Shape enhancing curved princess seams.
- Dyed-to-match flat back rib knit at center back. High stretch, high recovery for supreme comfort.

XS - 3X  
(Size M length: 27 3/4")

# 6229

Women's  
Flex Racerback Wrap Top



Women's Modern Fit and True-Plus Fit  
76% Polyester/20% Rayon/4% Spandex

- Two front lower top loading pockets and two invisible zipper side pockets.
- Utility loops at left and right shoulders.
- Flat back rib knit side panels and back for high stretch, high recovering and full range of movement.
- \*Fashion colors have pop contrast.

XS - 3X  
(Size M length: 27 1/4")

# 6329

Women's  
Dolman 3 Pocket Top



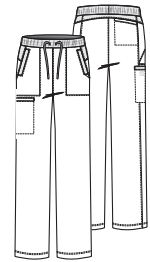
Women's Modern Fit and True-Plus Fit  
76% Polyester/20% Rayon/4% Spandex

- One chest pocket and two invisible zip side pockets.
- Dyed-to-match flat back rib at V-neck.
- Dolman sleeve for a trend-right look.
- Dyed-to-match flat back rib at side panels.
- Longer length in the back.
- Back box pleat for ease of movement.

XS - 3X  
(Size M length: front-27 3/4", back-28 3/4")

# 5129

Women's  
Flex Utility Cargo Pant



Straight Leg

Women's Modern Fit and True-Plus Fit  
76% Polyester/20% Rayon/4% Spandex

- Dyed-to-match flat back rib knit waist with full drawstring.
- Two side pockets, one welt cargo pocket, and one back pocket.
- Dyed-to-match flat back rib knit extension at back waist for added comfort.
- Inside drawcord with stopper at bottom hem.

XS - 3X  
Petite: XS - 3X (P)  
Tall: XS - 3X (T)  
(Size M leg opening: 8 3/4")

black - BLAC	BLAC
pewter - PEWT	PEWT
navy - NAVY	NAVY
royal - ROYA	ROYA
ceil blue - CEIL	CEIL
teal - TEAL	TEAL
caribbean blue - CARI	CARI
grape - GRAP	GRAP
purple - PURP	PURP
fuchsia - FUSA	FUSA
wine - WINE	WINE

Knit panel color

BLAC	BLAC
PEWT	PEWT
NAVY	NAVY
ROYA	ROYA
CEIL	CEIL
TEAL	NAVY
CARI	CARI
GRAP	BLAC
PURP	NAVY
FUSA	PEWT

Knit panel color

BLAC	BLAC
PEWT	PEWT
NAVY	NAVY
ROYA	ROYA
CEIL	CEIL
TEAL	TEAL
PURP	PURP
FUSA	FUSA
WINE	WINE

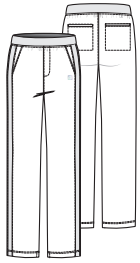
Knit panel color

BLAC	BLAC (P, T)
PEWT	PEWT (P, T)
NAVY	NAVY (P, T)
ROYA	ROYA (P, T)
CEIL	CEIL (P, T)
TEAL	TEAL (P, T)
CARI	CARI (P, T)
GRAP	GRAP (P, T)
PURP	PURP (P, T)
FUSA	FUSA (P, T)
WINE	WINE (P, T)

Knit waist color

# 5229

Women's  
Flex Racer Pull On Pant



Slim Leg

Women's Modern Fit and True-Plus Fit  
76% Polyester/20% Rayon/4% Spandex



Pull-on dyed-to-match flat back rib knit waist.



Two side pockets and two back welt pockets.



Flat back rib knit side stripes for added movement.  
\*Fashion colors have pop contrast.

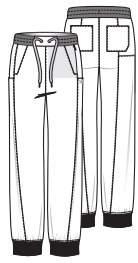


Inner bottom vents.

XS - 3X  
(Size M leg opening: 7 ¼")

# 5329

Women's  
Cargo Jogger Pant



Jogger Leg

Women's Modern Fit and True-Plus Fit  
76% Polyester/20% Rayon/4% Spandex



Dyed-to-match flat back rib at waistband with full drawstring.



Two front pockets, two back pockets, two cargo pockets and one invisible pocket below waistband at the side seam.



Dyed-to-match flat back rib at bottom cuffs.

**Inseam length**  
Regular : 28", Petite : 26", Tall : 31".

XS - 3X  
Petite: XS - 3X (P)  
Tall: XS - 3X (T)  
(Size M leg opening: 4¾")

# PONTE KNIT

## 6919

Women's  
Ponte Knit V-Neck Top



Women's Modern Fit and True-Plus Fit  
78% Polyester/18% Rayon/4% Spandex



Two front loading pockets with stretch resistant interior.

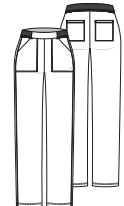


Shape enhancing tailored princess seam.

XS - 3X  
(Size M length: 27 ¾")

## 5919

Women's  
Ponte Knit Straight Leg Pant



Straight Leg

Women's Modern Fit and True-Plus Fit  
78% Polyester/18% Rayon/4% Spandex



Flat front waist with dyed-to-match soft elastic.



Two front pockets and two back welt pockets.



¼" deco flatlock stitch at bottom waistband.

XS - 3X  
Petite: XS - 3X (P)  
(Size M leg opening: 7 ¼")



BLAC	BLAC (P)
PEWT	PEWT (P)
NAVY	NAVY (P)

BLAC	BLAC (P)
PEWT	PEWT (P)
NAVY	NAVY (P)
ROYA	ROYA (P)
CEIL	CEIL (P)
TEAL	NAVY (P)
CARI	CARI (P)
GRAP	BLAC (P)
PURP	NAVY (P)
FUSA	PEWT (P)

Knit waist color

BLAC	BLAC (P)
PEWT	PEWT (P)
NAVY	NAVY (P)
ROYA	ROYA (P)
CEIL	CEIL (P)
TEAL	TEAL (P)
CARI	CARI (P)
PURP	PURP (P)
FUSA	FUSA (P)
WINE	WINE (P)

Knit waist color

## 8919

Women's  
Ponte Knit Warm Up Jacket



Two front invisible zip pockets and two inside pockets.



Zip front closure.



Double-needle stitching throughout.



Fold over elastic binding.

Women's Modern Fit and True-Plus Fit  
78% Polyester/18% Rayon/4% Spandex

XS - 3X  
(Size M length: 26 ¾")

BLAC
PEWT
NAVY



# EXPECT COMPLIMENTS.



6719 NAVY  
5719 NAVY

6355 TEAL  
5355 TEAL

800 ROYA  
504 ROYA



# THE SIMPLE SOLUTION

## FOR GROUP IDENTITY AND IMAGING NEEDS

WonderWink's secret to success is our ongoing commitment to crafting cutting-edge uniforms that yield powerful results. Choose from a variety of our tried-and-true bestsellers to ensure the perfect styling, fit and industry standard colors to meet your needs.



Stretches in all the right places wash, wear and go get carried away in comfort



Fashion Fits for all shapes & sizes  
Leading-edge microfiber technology  
Functional Utility



Active Twill  
Motion Stretch  
Flexible Fit  
Live-In Comfort



Superior construction and excellent fit  
Industry white, soft to the touch and durable  
Distinctive details

# WonderWink PRO™

DESIGNED TO WORK



8209 BLAC  
6519 REDT  
5319 REDT



6419 CEIL  
5419 CEIL



6319 ROYA  
5319 ROYA

Ropa Médica

# Ropa Médica



6719 WINE  
5719 WINE



6619 KHAK  
5619 KHAK



6519 TEAL  
5319 TEAL

**NEW**

**6719**  
Women's  
Dolman Top

**6319**  
Women's  
4 Pocket  
V-Neck Top

*Ropa Médica*



**6419**  
Women's  
4 Pocket  
Notch Neck Top



**6519**  
Women's  
Four Pocket  
Wrap Top

*Ropa Médica*



**NEW**

**5719**  
Women's  
Slim Cargo  
Jogger



**5319**  
Women's  
Moderate Flare  
Leg Cargo Pant

*Ropa Medica*

6619  
Men's  
V-neck Top



**IT  
FITS.**

STRETCHES IN  
ALL THE RIGHT  
PLACES.



**IT'S  
EASY.**

WASH, WEAR  
AND GO.



**IT'S  
SOFT.**

GET CARRIED  
AWAY IN  
COMFORT.

5419  
Women's  
Knit Waist  
Cargo Pant

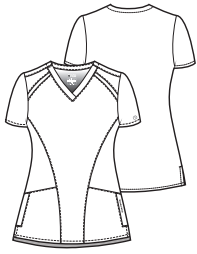
5619  
Men's  
Cargo Pant



*Roppa Médica*

# 6319

Women's  
4 Pocket V-Neck Top



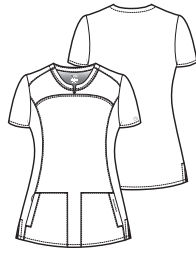
Women's Modern Fit and True-Plus Fit  
78% Polyester/20% Rayon/2% Spandex

- Two front lower top loading pockets and two side entry pockets.
- Stylized dropped shoulder. Badge loop at shoulder.
- WonderWink logo embroidery. Utility loop at right pocket. Vented sides.
- Embroidery friendly design.

XXS - 5X  
(Size M length: 27 ½")

# 6419

Women's  
4 Pocket Notch Neck Top



Women's Modern Fit and True-Plus Fit  
78% Polyester/20% Rayon/2% Spandex

- Two front lower top loading pockets and two side entry pockets.
- Stylized notch neckline. Badge loop at shoulder.
- Flattering curved princess seams.
- Utility loop at right pocket.
- WonderWink logo embroidery at left pocket. Vented sides.
- Embroidery friendly design.

XXS - 5X  
(Size M length: 28 ¼")

# 6519

Women's  
4 Pocket Wrap Top



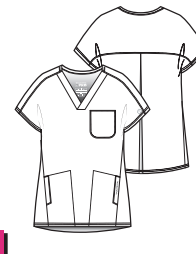
Women's Modern Fit and True-Plus Fit  
78% Polyester/20% Rayon/2% Spandex

- Two front lower top loading pockets and two side entry pockets.
- Silhouette enhancing curved y-neckline. Stylized dropped shoulder.
- Flattering curved double princess seam.
- WonderWink logo embroidery at left pocket. Vented sides.
- Embroidery friendly design.

XXS - 5X  
(Size M length: front 27 ½", back 28 ½")

# 6719

Women's  
Dolman Top



NEW

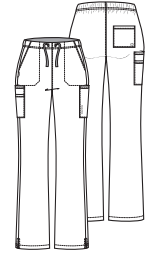
Women's Modern Fit and True-Plus Fit  
78% Polyester/20% Rayon/2% Spandex

- Two front side entry pockets and one chest pocket.
- Dropped shoulder dolman sleeve. Shoulder badge loop.
- WonderWink logo embroidery at left pocket.
- Back yoke with back pleat for added wearing ease. Longer back length.
- Embroidery friendly design.

XXS - 5X  
(Size M length: front 26 ¾", back 28 ¾")

# 5319

Women's  
Moderate Flare Leg Cargo Pant



Flare Leg

Women's Modern Fit and True-Plus Fit  
78% Polyester/20% Rayon/2% Spandex

- Front drawstring with half back elastic waistband.
- Two slash pockets with utility loop, two cargo pockets including double layer utility pocket, and one back pocket.
- WonderWink logo embroidery at cargo pocket.
- Vented bottom.

XXS - 5X  
Petite: XXS - 3X **P**  
Tall: XS - 3X **T**  
(Size M leg opening: 9 ¼")

Ropa Médica

white - WHIT
black - BLAC
pewter - PEWT
navy - NAVY
galaxy blue - GALA
royal - ROYA
ceil blue - CEIL
teal - TEAL
caribbean - CARI
hunter - HUNT
red - REDT
wine - WINE
khaki - KHAK

WHIT
BLAC
PEWT
NAVY
GALA
ROYA
CEIL
TEAL
CARI
HUNT
REDT
WINE
KHAK

WHIT
BLAC
PEWT
NAVY
GALA
ROYA
CEIL
TEAL
CARI
HUNT
REDT
WINE
KHAK

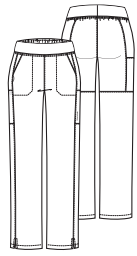
BLAC
PEWT
NAVY
ROYA
CEIL
TEAL
CARI
WINE

WHIT	<b>P T</b>
BLAC	<b>P T</b>
PEWT	<b>P T</b>
NAVY	<b>P T</b>
GALA	<b>P T</b>
ROYA	<b>P T</b>
CEIL	<b>P T</b>
TEAL	<b>P T</b>
CARI	<b>P T</b>
HUNT	<b>P T</b>
REDT	<b>P T</b>
WINE	<b>P T</b>
KHAK	<b>P T</b>



# 5419

Women's  
Knit Waist Cargo Pant



Straight Leg

Women's Modern Fit and True-Plus Fit  
78% Polyester/20% Rayon/2% Spandex



Dyed-to-match flexible knit waist band.



Two slash pockets and two cargo pockets.



WonderWink logo embroidery.



Utility loop.

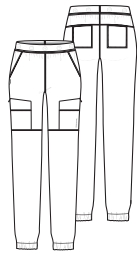


Vented bottom.

XXS - 5X  
Petite: XXS - 3X **P**  
Tall: XS - 3X **T**  
(Size M leg opening: 7 1/4")

# 5719

Women's  
Slim Cargo Jogger Pant



Jogger Leg

**NEW**

Women's Modern Fit and True-Plus Fit  
78% Polyester/20% Rayon/2% Spandex



Soft logo elastic waistband.



Two slash pockets, two top loading cargo pockets, two top entry zip cargo pockets and two back pockets.



WonderWink logo embroidery at cargo pocket.



Slim leg jogger fit with elastic cuff at bottom hem.

**Inseam length**  
Regular: 28", Petite: 26", Tall: 31"

XXS - 5X  
Petite: XXS - 3X **P**  
Tall: XS - 3X **T**  
(Size M leg opening: 5 1/4")

# 6619

Men's  
V-Neck Top



Men's Modern Fit  
78% Polyester/20% Rayon/2% Spandex



One chest pocket with pen slot.



Double badge loop at shoulder.



WonderWink logo embroidery at pocket.

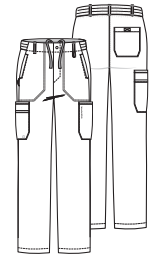


Vented sides.

XS - 5X  
(Size M length: front 29 3/4", back 30 3/4")

# 5619

Men's  
Cargo Pant



Straight Leg

Men's Modern Fit  
78% Polyester/20% Rayon/2% Spandex



Drawstring waist, elastic back, and belt loops.



Two side pockets, two cargo pockets including double layer utility pocket, and one back pocket.

XS - 5X  
Short: XS - 3X **S**  
Tall: S - 3X **T**  
(Size M leg opening: 8 3/4")



WHIT	<b>P T</b>
BLAC	<b>P T</b>
PEWT	<b>P T</b>
NAVY	<b>P T</b>
GALA	<b>P T</b>
ROYA	<b>P T</b>
CEIL	<b>P T</b>
TEAL	<b>P T</b>
CARI	<b>P T</b>
HUNT	<b>P T</b>
REDT	<b>P T</b>
WINE	<b>P T</b>
KHAK	<b>P T</b>

BLAC	<b>P T</b>
PEWT	<b>P T</b>
NAVY	<b>P T</b>
ROYA	<b>P T</b>
CEIL	<b>P T</b>
TEAL	<b>P T</b>
CARI	<b>P T</b>
WINE	<b>P T</b>

WHIT	<b>S T</b>
BLAC	<b>S T</b>
PEWT	<b>S T</b>
NAVY	<b>S T</b>
GALA	<b>S T</b>
ROYA	<b>S T</b>
CEIL	<b>S T</b>
TEAL	<b>S T</b>
CARI	<b>S T</b>
HUNT	<b>S T</b>
REDT	<b>S T</b>
WINE	<b>S T</b>
KHAK	<b>S T</b>

WHIT	<b>S T</b>
BLAC	<b>S T</b>
PEWT	<b>S T</b>
NAVY	<b>S T</b>
GALA	<b>S T</b>
ROYA	<b>S T</b>
CEIL	<b>S T</b>
TEAL	<b>S T</b>
CARI	<b>S T</b>
HUNT	<b>S T</b>
REDT	<b>S T</b>
WINE	<b>S T</b>
KHAK	<b>S T</b>



**WI23**<sup>™</sup>

THE ESSENTIALS THAT WORK



6455 EGGP  
5155 EGGP



6655 ROYA  
5655 ROYA

*Ropa Médica*

## W1 FASHION FIT



Feel comfortable and confident in distinctive styles with an unsurpassed fit. Choose from silhouettes that are tailored for all shapes and body types. Ranging from ladies' petites to True-Plus Fit sizing, each garment delivers a polished and slimming appearance. Men's styles follow suit with a Modern Fit and understated style.

Women's Modern Fit						True-Plus Fit				
XXS	XS	S	M	L	XL	1X	2X	3X	4X	5X

Revolutionizing the industry, these styles are offered in True-Plus Fit sizing. Available in 1X-5X, each garment is fit to comfortably contour and flatter the curves of your body. Eliminate the tugging, the pulling, and the frustration with our attention to fit details such as longer sleeve lengths, higher pant rises, and curvier hips. Find the true-fit for you!

Watch our video at [YouTube](#) to learn more about W123 fit.

Keyword: "WonderWink W123"



Multi-Purpose Accessory Loop

Hidden Utility Loop

WonderWink Silicone Ring

## W2 FABRIC



### Leading Edge MicroFiber Technology:

Smart 4-way stretch fabric constructed from flex-adaptive yarn synchronizes with your every movement. Quick-dry wicking fabric pulls moisture away from your body to keep you cool, fresh, and temperature regulated.



### Dimensional Stability:

With no shortage of resiliency, this fabric is shrink proof, fade proof, wrinkle resistant, and able to withstand repeated wash and wear.

## W3 FUNCTION



Standout styling paired with functional utility creates superb organization using spacious pockets, multiple utility loops, and thoughtful trims.

# Ropa Médica

Shoulder Badge Loop

Comfort Curve V-Neck

Smart Style Lines



**WI23™**

THE ESSENTIALS THAT WORK

**6155**  
Women's  
Stylized  
V-Neck Top



**6255**  
Women's  
Basic V-Neck Top



*Ropa Médica*

**6555**  
Women's  
Flex-Back Stylized  
V-Neck Top



**6455**  
Women's  
Mock Wrap  
Top



*Ropa Médica*

**8155**  
Women's  
Crew Neck  
Warm Up  
Jacket





# WI23™

**5155**  
Women's  
Flat Front  
Double  
Cargo Pant



**5255**  
Women's  
Drawstring  
Pant



**5555**  
Women's  
Comfort Waist  
Cargo Jogger  
Pant



*Ropa Médica*

Men's Modern Fit with limitless function, these men's styles are built for a man on the move. Experience the difference with key fit features such as gusseted pants, oversized pockets, and a functioning fly.

**NEW**

**6655**  
Men's  
Colorblock Top



**NEW**

**5655**  
Men's  
Cargo Jogger Pant



**6355**  
Men's  
V-Neck Top



**5355**  
Men's  
Flat Front  
Cargo Pant

*Ropa Médica*



THE ESSENTIALS THAT WORK



6155

Women's  
Stylized V-Neck Top



Women's Modern Fit and True-Plus Fit  
100% Microfiber Poly 4-way Stretch



Two front lower top loading double pockets including sectional pocket, cell phone pocket, and hidden three part utility loop.



Shoulder badge loop.



Vented sides.



WonderWink silicone ring.

XXS - XL, Plus: 1X - 5X  
(Size M length: 27 1/4")

Ropa Médica

white - WHIT

black - BLAC

pewter - PEWT

navy - NAVY

royal - ROYA

cell blue - CEIL

grey - GREY

olive - OLIV

hunter - HUNT

caribbean - CARI

teal - TEAL

galaxy blue - GALA

grape - GRAP

eggplant - EGGP

wine - WINE

hot pink - HTPK

red - REDT

khaki - KHAK

6555 REDT  
5555 REDT



# 6255

Women's  
Basic V-Neck Top



Women's Classic Fit and True-Plus Fit  
100% Microfiber Poly 4-way Stretch



Two front lower top loading pockets with hidden three part utility loop.



Shoulder badge loop.



Vented sides.



WonderWink silicone ring.

XXS - XL, Plus: 1X - 5X  
(Size M length: 28 ¼")

WHIT
BLAC
PEWT
NAVY
ROYA
CEIL

HUNT
CARI
TEAL

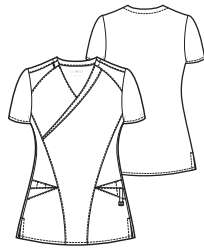
WINE
------

REDT
------

KHAK
------

# 6455

Women's  
Mock Wrap Top



Women's Modern Fit and True-Plus Fit  
100% Microfiber Poly 4-way Stretch



Two front lower top loading triple pockets including sectional pocket, cell phone pocket, utility pocket and pen slot.



Asymmetrical mock wrap top.



Shoulder badge loop.



Vented sides.



WonderWink silicone ring.

XXS - XL, Plus: 1X - 5X  
(Size M length: 27")

WHIT
BLAC
PEWT
NAVY
ROYA
CEIL

HUNT
CARI

GALA
------

GRAP
------

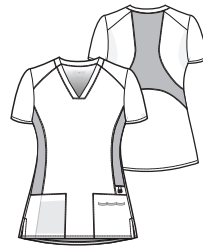
EGGP
------

WINE
------

HTPK
------

# 6555

Women's  
Flex-Back Stylized V-Neck Top



Women's Modern Fit and True-Plus Fit  
100% Microfiber Poly 4-way Stretch



Two front pockets with inside pocket and hidden utility loops.



Modified sporty V-neck design.



Dyed-to-match knit racer back design with drop tail hemline and side knit paneling for a slimming effect.



Vented sides.



WonderWink silicone ring.

XXS - XL, Plus: 1X - 5X  
(Size M length front: 26 ¾", back: 28 ½")

BLAC
PEWT
NAVY
ROYA
CEIL

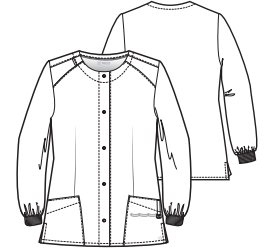
HUNT
CARI
TEAL

WINE
------

REDT
------

# 8155

Women's  
Crew Neck Warm Up Jacket



Women's Modern Fit and True-Plus Fit  
100% Microfiber Poly 4-way Stretch



Two front lower top loading lower pockets with hidden three part utility loop.



Shoulder badge loop.



Vented sides.



WonderWink silicone ring.

XXS - XL, Plus: 1X - 5X  
(Size M length: 28 ¼")

WHIT
BLAC
PEWT
NAVY
ROYA
CEIL

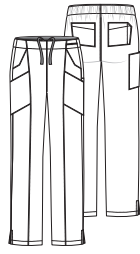
HUNT
CARI

WINE
------

Ropa Medica

# 5155

Women's  
Flat Front Double Cargo Pant



Women's Modern Fit and True-Plus Fit  
100% Microfiber Poly 4-way Stretch



Flat front full elastic waist with inside webbed drawstring.



Two front slant pockets, two stylized cargo pockets, one cell phone pocket, and two back pockets with pen slot.



Utility loop at waist.



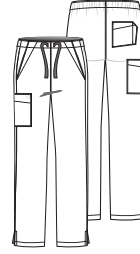
Vented bottom.

XXS - XL, Plus: 1X - 5X  
Petite: XXS - XL, Plus Petite: 1X - 3X **P**  
Tall: XS - XL, Plus Tall: 1X - 3X **T**  
(Size M leg opening: 7 3/4")

white - WHIT	<b>P T</b>
black - BLAC	<b>P T</b>
pewter - PEWT	<b>P T</b>
navy - NAVY	<b>P T</b>
royal - ROYA	<b>P T</b>
ceil blue - CEIL	<b>P T</b>
grey - GREY	<b>P T</b>
olive - OLIV	<b>P T</b>
hunter - HUNT	<b>P T</b>
caribbean - CARI	<b>P T</b>
teal - TEAL	<b>P T</b>
galaxy blue - GALA	<b>P T</b>
grape - GRAP	<b>P T</b>
eggplant - EGGP	<b>P T</b>
wine - WINE	<b>P T</b>
hot pink - HTPK	<b>P T</b>
red - REDT	<b>P T</b>
khaki - KHAK	<b>P T</b>

# 5255

Women's  
Drawstring Pant



Women's Classic Fit and True-Plus Fit  
100% Microfiber Poly 4-way Stretch



Flat front webbed drawstring.



Two front slant pockets with deco stitching, one cargo pocket, and one back pocket with deco stitching.



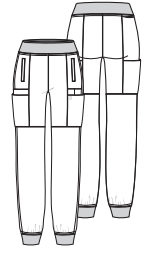
Vented bottom.

XXS - XL, Plus: 1X - 5X  
Petite: XXS - XL, Plus Petite: 1X - 3X **P**  
Tall: XS - XL, Plus Tall: 1X - 3X **T**  
(Size M leg opening: 7 3/4")

WHIT	<b>P T</b>
BLAC	<b>P T</b>
PEWT	<b>P T</b>
NAVY	<b>P T</b>
ROYA	<b>P T</b>
CEIL	<b>P T</b>
HUNT	<b>P T</b>
CARI	<b>P T</b>
TEAL	<b>P T</b>
WINE	<b>P T</b>
REDT	<b>P T</b>
KHAK	<b>P T</b>

# 5555

Women's  
Comfort Waist Cargo Jogger Pant



Women's Modern Fit and True-Plus Fit  
100% microfiber poly 4-way stretch



Dyed-to-Match knit yoga waist with interior control tie.



Two front welt pockets with runners pocket along back waist, and two roomy cargo pockets with three additional accessory pockets.



Slim leg jogger fit with knit cuff at bottom hem.

### Inseam length

Regular: 28", Petite: 26", Tall: 31"

XXS - XL, Plus: 1X - 5X  
Petite: XXS - XL, Plus Petite: 1X - 3X **P**  
Tall: XS - XL, Plus Tall: 1X - 3X **T**  
(Size M leg opening: 4 1/2")

BLAC	<b>P T</b>
PEWT	<b>P T</b>
NAVY	<b>P T</b>
ROYA	<b>P T</b>
CEIL	<b>P T</b>
HUNT	<b>P T</b>
CARI	<b>P T</b>
TEAL	<b>P T</b>
WINE	<b>P T</b>
REDT	<b>P T</b>

## W1 FASHION FIT



## W2 FABRIC

Leading Edge  
MicroFiber Technology



Dimensional Stability

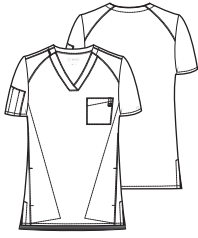


## W3 FUNCTION



# 6355

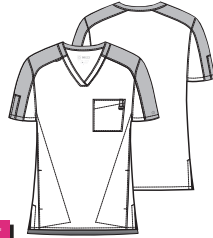
Men's  
V-Neck Top



NEW

# 6655

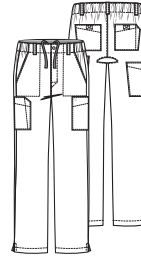
Men's  
Colorblock Top



NEW

# 5355

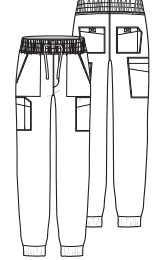
Men's  
Flat Front Cargo Pant



NEW

# 5655

Men's  
Cargo Jogger Pant



NEW

Men's Modern Fit  
100% Microfiber Poly 4-way Stretch

Two lower side entry pockets, one chest pocket with utility loop, and pen slot sleeve pocket.

Shoulder badge loop.

Vented sides.  
Longer back length.

WonderWink silicone ring.  
Embroidery friendly design.

XS - 5X  
(Size M length: front-29", back-30")

Men's Modern Fit  
100% Microfiber Poly 4-way Stretch

Two lower side entry pockets, one chest pocket with utility loop, and pen slot sleeve pocket.

Contrast color at sleeve, shoulder, and back neckline.  
Shoulder badge loop.

Vented sides.  
Longer back length.

WonderWink silicone ring.  
Embroidery friendly design.

XS - 5X  
(Size M length: front-29", back-30")

Men's Modern Fit  
100% Microfiber Poly 4-way Stretch

Flat front full elastic waist with zip fly and five belt loops. Inside webbed drawstring.

Two front slant pockets, two stylized cargo pockets with pen slot, one cell phone pocket, and two back pockets with pen slot and hook and loop closure.

Hidden gusset.

Vented bottom.

XS - 5X  
Short: XS - 3X (S)  
Tall: S - 3X (T)  
(Size M leg opening: 8 3/4")

Men's Modern Fit  
100% Microfiber Poly 4-way Stretch

Full elastic waist and full drawstring with zip fly.

Two front slash pockets, two stylized cargo pockets with cell phone pocket and pen slot, two back pockets with pen slot and hook and loop closure.

Slim leg jogger fit with elastic cuff at bottom hem.

**Inseam length**  
Regular: 28 1/2", Tall: 32".

XS - 5X  
Tall: S - 3X (T)  
(Size M leg opening: 5 3/4")

WHIT

BLAC

PEWT

NAVY

ROYA

CEIL

GREY

OLIV

HUNT

CARI

TEAL

GALA

WINE

REDT

KHAK

BLAC

PEWT

PEWT

BLAC

NAVY

PEWT

ROYA

NAVY

CEIL

NAVY

WHIT

(S T)

BLAC

(S T)

PEWT

(S T)

NAVY

(S T)

ROYA

(S T)

CEIL

(S T)

GREY

(S T)

OLIV

(S T)

HUNT

(S T)

CARI

(S T)

TEAL

(S T)

GALA

(S T)

WINE

(S T)

REDT

(S T)

KHAK

(S T)

BLAC

(T)

PEWT

(T)

NAVY

(T)

ROYA

(T)

CEIL

(T)

*Ropa Médica*

700 WHIT  
102 LTUR  
502 LTUR

101 FUSA  
501 FUSA



### **INNOVATIVE ACTIVE Twill**

Our WonderWink WonderWORK Active Twill fabric is constructed using finer, more durable yarns. The combination of these elements allows for beautiful drape and exquisite hand, without sacrificing dependability & professionalism.



### **360 DEGREE MOTION STRETCH**

Our Active Twill has just raised the bar. Using an industry favorite fabric blend, 65% Polyester/35% Cotton, we have enhanced the performance by adding mechanical Motion Stretch without incorporating a spandex yarn. This provides the lasting durability of a Poly/Cotton blend, with the movement of a stretch fabric.



### **FORMULATED FLEXIBLE FIT**

Paying close attention to every fit detail, we have approached our fit method differently by tailoring each size individually and in respect to the wearer. Our plus sizing is designed and built specifically for a fuller figure. On all styles, we have added slight shaping where it flatters but allowed for the necessary ease resulting in a relaxed, modern fit. Our Flexible Fit provides a full range of movement.



### **REDEFINED LIVE-IN COMFORT**

WonderWink WonderWORK styling remains polished without sacrificing function: utilitarian details provide storage for gadgets and gear while maintaining a clean, professional appearance. With the innovative fabric, fit, and styling, these everyday scrubs truly redefine Live-in Comfort.



**100**  
Unisex  
V-Neck Top

*Ropa Médica*



**101**  
Women's  
V-Neck Top

**103**  
Men's  
V-Neck Top

**200**  
Women's  
Short Sleeve  
Snap Front Top

*Ropa Médica*



**102**  
Women's  
Mock Wrap Top

**400**  
Unisex  
Solid Scrub Cap



**800**  
Unisex  
Snap Front  
Jacket

*Ropa Médica*

**500**  
Unisex  
Drawstring  
Cargo Pant



**501**  
Women's  
Pull-On  
Cargo Pant



**502**  
Women's  
Flare Leg  
Pant



# Ropa Médica

**504**  
Women's  
Straight Leg  
Cargo Pant



**701**  
Women's  
Pull On  
Cargo Skirt



**503**  
Men's  
Cargo Pant







**700**  
Women's  
Basic Lab Coat



**703**  
Men's  
Basic Lab Coat

*Ropa Médica*



**Wonder  
WORK**

# VOLUNTEER



**803**  
Men's  
Blazer



**300**  
Unisex  
Vest

*Ropa Médica*



**201**  
Women's  
Smock

**145**  
Women's  
Maternity Mock  
Wrap Top

**545**  
Women's  
Maternity Cargo Pant



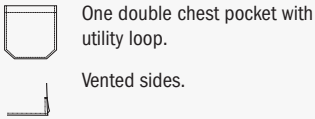
*Ropa Médica*

# 100

Unisex  
V-Neck Top



Unisex Fit  
65% Polyester / 35% Cotton



One double chest pocket with utility loop.

Vented sides.

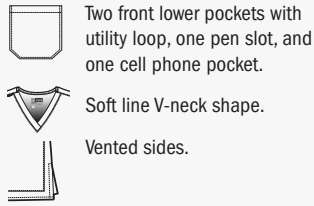
XXS - 5X  
(Size M length: 27 3/4")

# 101

Women's  
V-Neck Top



Women's Classic Fit and True-Plus Fit  
65% Polyester / 35% Cotton



Two front lower pockets with utility loop, one pen slot, and one cell phone pocket.

Soft line V-neck shape.

Vented sides.

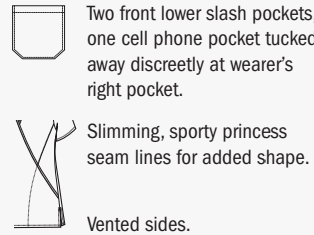
XXS - 5X  
(Size M length: 28 1/4")

# 102

Women's  
Mock Wrap Top



Women's Classic Fit and True-Plus Fit  
65% Polyester / 35% Cotton



Two front lower slash pockets, one cell phone pocket tucked away discreetly at wearer's right pocket.

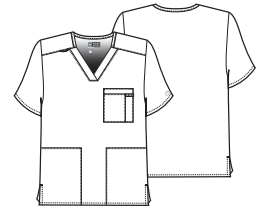
Slimming, sporty princess seam lines for added shape.

Vented sides.

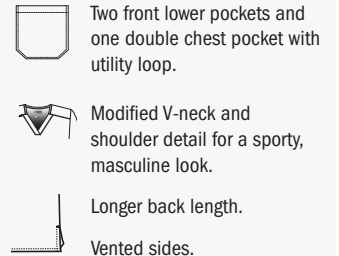
XXS - 5X  
(Size M length: 28 1/4")

# 103

Men's  
V-Neck Top



Men's Classic Fit  
65% Polyester / 35% Cotton



Two front lower pockets and one double chest pocket with utility loop.

Modified V-neck and shoulder detail for a sporty, masculine look.

Longer back length.

Vented sides.

XS - 5X  
(Size M length: front-30", back-31")

white - WHIT
black - BLAC
pewter - PEWT
navy - NAVY
royal - ROYA
cell blue - CEIL
galaxy blue - GALA
light turquoise - LTUR
teal - TEAL
caribbean - CARI
hunter - HUNT
olive - OLIV
surgical green - SURG
fuchsia - FUSA
red - REDT
wine - WINE
eggplant - EGGP
grape - GRAP
chocolate - CHOC
khaki - KHAK
grey - GREY

WHIT
BLAC
PEWT
NAVY
ROYA
CEIL
GALA
LTUR
TEAL
CARI
HUNT
OLIV
SURG
FUSA
REDT
WINE
EGGP
GRAP
CHOC
KHAK
GREY

WHIT
BLAC
PEWT
NAVY
ROYA
CEIL
GALA
LTUR
TEAL
CARI
HUNT
OLIV
SURG
FUSA
REDT
WINE
EGGP
GRAP
CHOC
KHAK
GREY

WHIT
BLAC
PEWT
NAVY
ROYA
CEIL
GALA
TEAL
CARI
HUNT
OLIV
SURG
REDT
WINE
GRAP
CHOC
KHAK
GREY

# 200

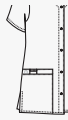
Women's  
Short Sleeve Snap Front Top



Women's Classic Fit and True-Plus Fit  
65% Polyester / 35% Cotton



Two front lower pockets with utility loop, one pen slot, and one cell phone pocket.



Easy front snap closure.  
Vented sides.

XXS - 5X  
(Size M length: 27 3/4")

WHIT

BLAC

PEWT

NAVY

ROYA

CEIL

HUNT

WINE

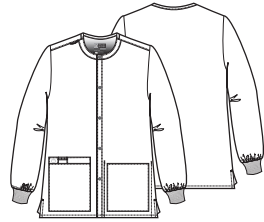
CHOC

KHAK

GREY

# 800

Unisex  
Snap Front Jacket



Unisex Fit  
65% Polyester / 35% Cotton



Two front lower pockets with utility loop, one pen slot, one cell phone pocket, and one inside tablet pocket.



Soft rib knit cuffs.  
Easy front snap closure.  
Vented sides.

XXS - 5X  
(Size M length: 29 3/4")

WHIT

BLAC

PEWT

NAVY

ROYA

CEIL

GALA

LTUR

TEAL

CARI

HUNT

OLIV

SURG

FUSA

REDT

WINE

EGGP

GRAP

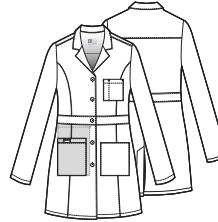
CHOC

KHAK

GREY

# 700

Women's  
Basic Lab Coat



Women's Classic Fit and True-Plus Fit  
65% Polyester / 35% Cotton



Two front lower pockets with utility loop, one pen slot, one cell phone pocket, one chest pocket with pen slot, and one inside tablet pocket.



Inset waistband.  
Vented Back.

XXS - 5X  
(Size M length: 33 1/2")

WHIT

# 703

Men's  
Basic Lab Coat



Men's Classic Fit  
65% Polyester / 35% Cotton



Two front lower pockets with utility loop, one pen slot, one cell phone pocket, one chest pocket with pen slot, and one inside tablet pocket.



Back yoke with pleats.  
Inset waistband.  
Vented back.

XS - 5X  
(Size M length: 35 1/2")

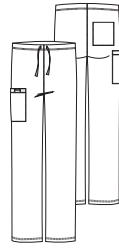
WHIT



Ropa Médica

# 500

## Unisex Drawstring Cargo Pant



Straight Leg

Unisex Fit  
65% Polyester / 35% Cotton



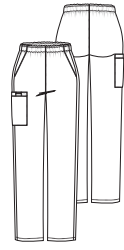
Natural rise with a full drawstring waist.



One cargo pocket with utility loop, one pen slot one cell phone pocket, and one back pocket.

# 501

## Women's Pull-On Cargo Pant



Straight Leg

Women's Classic Fit and True-Plus Fit  
65% Polyester / 35% Cotton



Full elastic waist, front rise sits slightly below natural waist with back rise being a bit higher for more coverage.



Two front slash pockets, one cargo pocket with utility loop, one pen slot, and one cell phone pocket.

XXS - 5X  
Short: XXS - 3X **S**  
Tall: XS - 3X **T**  
(Size M leg opening: 9")

XXS - 5X  
Petite: XXS - 3X **P**  
Tall: XS - 3X **T**  
(Size M leg opening: 9")

white - WHIT	<b>S T</b>
black - BLAC	<b>S T</b>
pewter - PEWT	<b>S T</b>
navy - NAVY	<b>S T</b>
royal - ROYA	<b>S T</b>
cell blue - CEIL	<b>S T</b>
galaxy blue - GALA	<b>S T</b>
light turquoise - LTUR	<b>S T</b>
teal - TEAL	<b>S T</b>
caribbean - CARI	<b>S T</b>
hunter - HUNT	<b>S T</b>
olive - OLIV	<b>S T</b>
surgical green - SURG	<b>S T</b>
fuchsia - FUSA	<b>S T</b>
red - REDT	<b>S T</b>
wine - WINE	<b>S T</b>
eggplant - EGGP	<b>S T</b>
grape - GRAP	<b>S T</b>
chocolate - CHOC	<b>S T</b>
khaki - KHAK	<b>S T</b>
grey - GREY	<b>S T</b>

WHIT	<b>P T</b>
BLAC	<b>P T</b>
PEWT	<b>P T</b>
NAVY	<b>P T</b>
ROYA	<b>P T</b>
CEIL	<b>P T</b>
GALA	<b>P T</b>
LTUR	<b>P T</b>
TEAL	<b>P T</b>
CARI	<b>P T</b>
HUNT	<b>P T</b>
OLIV	<b>P T</b>
SURG	<b>P T</b>
FUSA	<b>P T</b>
REDT	<b>P T</b>
WINE	<b>P T</b>
EGGP	<b>P T</b>
GRAP	<b>P T</b>
CHOC	<b>P T</b>
KHAK	<b>P T</b>
GREY	<b>P T</b>

# 502

Women's  
Flare Leg Pant



Flare Leg

Women's Classic Fit and True-Plus Fit  
65% Polyester / 35% Cotton



Back elastic waist with full adjustable drawstring, front rise sits slightly below natural waist with back rise being a bit higher for more coverage.



Two front slash pockets and two back pockets.



Utility belt loop.



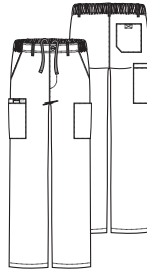
Vented bottom.

XXS - 5X  
Petite: XXS - 3X **P**  
Tall: XS - 3X **T**  
(Size M leg opening: 10 1/4")

WHIT	<b>P T</b>
BLAC	<b>P T</b>
PEWT	<b>P T</b>
NAVY	<b>P T</b>
ROYA	<b>P T</b>
CEIL	<b>P T</b>
GALA	<b>P T</b>
LTUR	<b>P T</b>
TEAL	<b>P T</b>
CARI	<b>P T</b>
HUNT	<b>P T</b>
OLIV	<b>P T</b>
SURG	<b>P T</b>
FUSA	<b>P T</b>
REDT	<b>P T</b>
WINE	<b>P T</b>
EGGP	<b>P T</b>
GRAP	<b>P T</b>
CHOC	<b>P T</b>
KHAK	<b>P T</b>
GREY	<b>P T</b>

# 503

Men's  
Cargo Pant



Straight Leg

Men's Classic Fit  
65% Polyester / 35% Cotton



Fully constructed waist, functional fly with button closure, full inner drawstring, back elastic, and five belt loops.



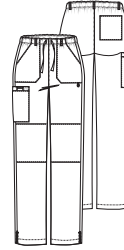
Two front slash pockets, two cargo pockets including one double cargo pocket, one pen slot, one cell phone pocket, and one back pocket.

XXS - 5X  
Short: XS - 3X **S**  
Tall: XS - 3X **T**  
(Size M leg opening: 9 3/4")

WHIT	<b>S T</b>
BLAC	<b>S T</b>
PEWT	<b>S T</b>
NAVY	<b>S T</b>
ROYA	<b>S T</b>
CEIL	<b>S T</b>
GALA	<b>S T</b>
LTUR	<b>S T</b>
TEAL	<b>S T</b>
CARI	<b>S T</b>
HUNT	<b>S T</b>
OLIV	<b>S T</b>
SURG	<b>S T</b>
FUSA	<b>S T</b>
REDT	<b>S T</b>
WINE	<b>S T</b>
GRAP	<b>S T</b>
CHOC	<b>S T</b>
KHAK	<b>S T</b>
GREY	<b>S T</b>

# 504

Women's  
Straight Leg Cargo Pant



Straight Leg

Women's Classic Fit and True-Plus Fit  
65% Polyester / 35% Cotton



Full elastic waist with full adjustable drawstring. Front rise sits slightly below natural waist with back rise being a bit higher for more coverage, five belt loops at waist.



Two front slash pockets, one back patch pocket, and one double cargo pocket with pen slot and utility loop.



Signature ID bungee loop at left pocket.



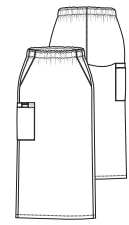
Vented bottom.

XXS - 5X  
Petite: XXS - 3X **P**  
Tall: XS - 3X **T**  
(Size M leg opening: 8 3/4")

WHIT	<b>P T</b>
BLAC	<b>P T</b>
PEWT	<b>P T</b>
NAVY	<b>P T</b>
ROYA	<b>P T</b>
CEIL	<b>P T</b>
GALA	<b>P T</b>
LTUR	<b>P T</b>
TEAL	<b>P T</b>
CARI	<b>P T</b>
HUNT	<b>P T</b>
OLIV	<b>P T</b>
SURG	<b>P T</b>
FUSA	<b>P T</b>
REDT	<b>P T</b>
WINE	<b>P T</b>
EGGP	<b>P T</b>
GRAP	<b>P T</b>
CHOC	<b>P T</b>
KHAK	<b>P T</b>
GREY	<b>P T</b>

# 701

Women's  
Pull On Cargo Skirt



Full elastic waist.



Two slanted front pockets and one double cargo pocket with utility loop and pen slot.

XXS - 5X  
(Size M length: 30 1/4")

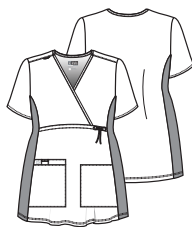
WHIT
BLAC
PEWT
NAVY
ROYA
CEIL
GALA
LTUR
TEAL
CARI
HUNT
FUSA
REDT
WINE
EGGP
GRAP
CHOC
KHAK
GREY



*Ropa Médica*

145

Women's  
Maternity Mock Wrap Top



Women's Classic Fit  
65% Polyester / 35% Cotton



Two front lower pockets with utility loop, one pen slot, and one cell phone pocket.



Dyed-to-match knit side panels and front waist tie.



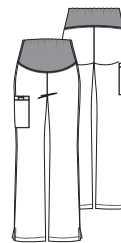
Longer front length.

XS-3X  
(Size M length: 29 1/4")

white - WHIT
black - BLAC
pewter - PEWT
navy - NAVY
royal - ROYA
ceil blue - CEIL
galaxy blue - GALA
light turquoise - LTUR
teal - TEAL
caribbean - CARI
hunter - HUNT

545

Women's  
Maternity Cargo Pant



Flare Leg

Women's Classic Fit  
65% Polyester / 35% Cotton



Dyed-to-match silky knit waist panel.



One cargo pocket with utility loop, one pen slot, and one cell phone pocket.



Vented bottom.

XS-3X  
(Size M leg opening: 8 3/4")

WHIT
BLAC
PEWT
NAVY
ROYA
CEIL
GALA
LTUR
TEAL
CARI
HUNT

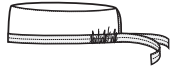
fuchsia - FUSA
red - REDT
wine - WINE
eggplant - EGGP
grape - GRAP
chocolate - CHOC
khaki - KHAK
grey - GREY

FUSA
REDT
WINE
EGGP
GRAP
CHOC
KHAK
GREY



# 400

Unisex  
Solid Scrub Cap



Unisex Fit  
65% Polyester / 35% Cotton



Back tie closure, covered elastic band.

Terry cloth sweat band inside.

WonderWink logo at center back.

One size

WHIT
BLAC
PEWT
NAVY
ROYA
CEIL
TEAL
CARI
HUNT
OLIV
SURG
REDT
WINE
CHOC
KHAK

# 300

Unisex  
Vest



Unisex Fit  
65% Polyester / 35% Cotton



Two front lower pockets.



Forward shoulder and ID badge holder at shoulder. Dyed-to-match button closure.



Vented sides.

XS-3X  
(Size M length: 29 3/4")

white - WHIT
black - BLAC
navy - NAVY
royal - ROYA
teal - TEAL
hunter - HUNT
pink - PNKT
salmon - SALM
red - REDT
wine - WINE
grape - GRAP

# 201

Women's  
Smock



Women's Classic Fit and True-Plus Fit  
65% Polyester / 35% Cotton



Two front lower pockets.



Forward shoulder with ID badge holder. Rounded collar. Dyed-to-match button closure.



Princess seaming for fit. 3/4 sleeve with optional flip cuff.



Fit feature at inner back. Vented sides.

XS-3X  
(Size M length: 29 1/4")

WHIT
BLAC
NAVY
ROYA
TEAL
HUNT
PNKT
SALM
REDT
WINE
GRAP

# 803

Men's  
Blazer



Men's Classic Fit  
65% Polyester / 35% Cotton



Two front lower pockets.



Forward shoulder with ID badge holder.



Back yoke.



Dyed-to-match button closure.



Vented sides.

XS-3X  
(Size M length: 30")

BLAC
NAVY
ROYA
TEAL
HUNT
PNKT
SALM
REDT
WINE
GRAP



# WONDERLAB

WonderLAB raises the bar for the healthcare industry.

Superior construction and excellent fit are trademarks of WonderLAB. WonderLAB offers gender specific, highly functional working garments. Find premium fabrics that are industry white, soft to the touch and durable for the long shift ahead.

Look for distinctive details on selected coats such as beautiful white on white trim, inner tablet pockets, side access, and locker loops. With WonderLAB, discover lab coats that are both group friendly and the best value in the industry.

**7102**  
Men's  
Consultation  
Coat



**7302**  
Men's  
Long Lab Coat



*Ropa Médica*

**7202**  
Women's  
Consultation Coat

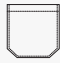






**7102**  
Men's  
Consultation Coat



Size M length: 31 1/2"

Men's Classic Fit  
65% Polyester / 35% Cotton Poplin

-  Two front lower pockets, one chest pocket with pen slot, and inner tablet pocket.
-  White logo embroidery at front lower left pocket.
-  Locker loop.
-  Back pleats.
-  Vented back.

XS - 5X

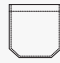



white - WHT

**7202**  
Women's  
Consultation Coat



Size M length: 29 1/2"

Women's Classic Fit  
65% Polyester / 35% Cotton Poplin

-  Two front lower pockets, one chest pocket with pen slot, and inner tablet pocket.
-  White logo embroidery at front lower left pocket.
-  Locker loop.
-  Vented back.

XXS - 5X

white - WHT

**7402**  
Women's  
Long Lab Coat

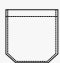







**7302**  
Men's  
Long Lab Coat



Size M length: 42"

Men's Classic Fit  
65% Polyester / 35% Cotton Poplin

-  Two front lower pockets, one chest pocket with pen slot, and inner tablet pocket.
-  White logo embroidery at front lower left pocket.
-  Locker loop.
-  Back pleats.
-  Side Access.
-  Vented sides and back.

XS - 5X

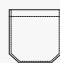
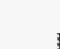


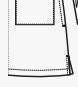
white - WHT

**7402**  
Women's  
Long Lab Coat



Size M length: 38"

Women's Classic Fit  
65% Polyester / 35% Cotton Poplin

-  Two front lower pockets, one chest pocket with pen slot, and inner tablet pocket.
-  White logo embroidery at front lower left pocket.
-  Locker loop.
-  Side Access.
-  Vented sides and back.

XXS - 5X

white - WHT

Ropa Médica

Ropa Médica



## 8209

Women's Fleece Full Zip Jacket

Women's Modern Fit and True-Plus Fit

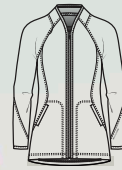
Versatile and flattering, our Women's Full-Zip jacket is constructed from a soft and durable lightweight fleece, designed with maximum comfort in mind.

- Raglan sleeves for full range of motion
- Princess seams for a feminine, slimming silhouette
- Stand-up collar for those extra chilly mornings
- Deep welt pockets for functionality
- 2 inner top loading pockets

92% Polyester / 8% Spandex

XS - 3X (Size M length: 26 ¾")

BLAC, CORA, NAVY, PEWT, ROYA, WINE



black - **BLAC**

pewter - **PEWT**

navy - **NAVY**

**NEW**

royal - **ROYA**

wine - **WINE**

coral punch - **CORA**





## 8309

### Men's Fleece Full Zip Jacket

#### Men's Modern Fit

Our Men's Full-Zip Jacket is constructed from a soft and durable and lightweight fleece, and designed for comfort.

- Sporty raglan sleeves for full range of motion
- Flatlock seam construction for next-to-skin comfort and a sleek silhouette
- Full zip style great for layering
- Deep welt pockets for functionality
- 2 inner top loading pockets

92% Polyester / 8% Spandex

XS - 3X (Size M length: 30 1/4")

BLAC, NAVY, PEWT, **ROYA**, WINE



black - **BLAC**

pewter - **PEWT**

navy - **NAVY**

**NEW**

royal - **ROYA**

wine - **WINE**

*Ropa Médica*



# LAYERS



Ropa Médica

### Available Colors

white - WHT
black - BLK
pewter - PEW
navy - NVY
royal - RYL
cell blue - CBL
green apple - GAP
hunter - HTR
caribbean blue - CRB
real teal - RTL
malibu blue - MBL
galaxy blue - GBL
electric violet - EVL
wine - WIN
hot pink - HPK
red - RED
papaya - PYA
yellow - YLW

## 1029

### WonderWink Logo Tank Top

Women's Modern Fit and True-Plus Fit

Our WonderWink tank is soft to the touch and fits close to the body without restricting mobility. A basic layering piece available in three colors will set the tone for the rest of your wardrobe no matter the occasions.

96% Rayon / 4% Spandex

XS - 2X (Size M length: 27 3/4")

BLK, WHT, YLW

black - BLK
white - WHT
WonderWink yellow - YLW



## 2009

### Silky Long Sleeve Tee

Women's Modern Fit and True-Plus Fit

A fashionable twist on the classic long sleeve tee for those who love soft and luxurious fabrics. Our extra long sleeves create a modern look that's up-to-date with the latest trends. Indulge yourself.

96% Rayon / 4% Spandex

XS - 2X (Size M length: 27 1/4")

BLK, CBL, CRB, EVL, GAP, GBL, HPK, HTR, MBL, NVY, PEW, PYA, RED, RTL, RYL, WHT, WIN, YLW

3X

BLK, HPK, NVY, PEW, WHT



## 2079

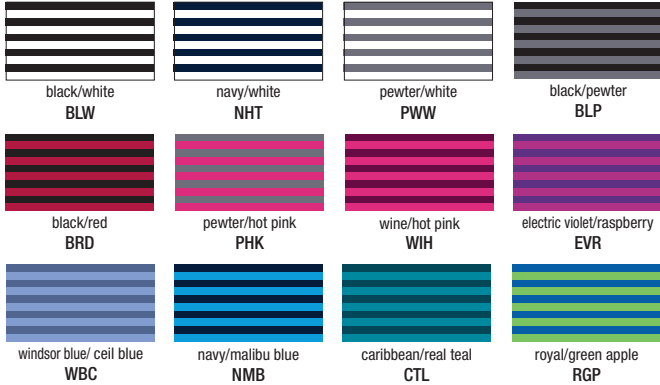
### Long Sleeve Striped Tee

Women's Modern Fit and True-Plus Fit  
Our silky tee just got its STRIPES! This luxuriously soft, long sleeve tee is sporty and looks fantastic alone or layered with your favorite WonderWink tops. The same great, modern fit as our famous solid silky tee, but we added a little flare with the alternating stripe at the cuff.

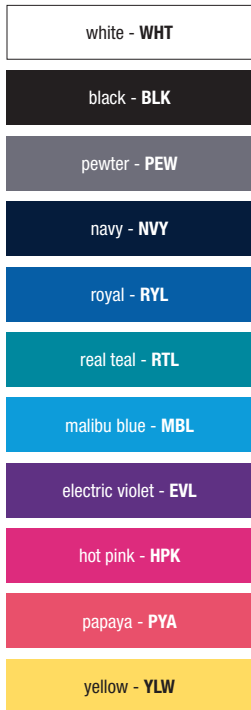
96% Rayon / 4% Spandex

XS - 2X (Size M length: 27 ¼")

BLP, BLW, BRD, CTL, EVR, NHT, NMB, PHK, RGP, PWW, WBC, WIH



RopaMedica



## 2209

### Silky Short Sleeve Tee

Women's Modern Fit and True-Plus Fit  
The same great fit and feel as our popular long sleeve silky tee, now with a short sleeve option. This tee offers our proven, luxurious feel fabric and the longer length for the up-to-date modern trend. Indulge yourself, twice!

96% Rayon / 4% Spandex

XS - 2X (Size M length: 27 ¼")

BLK, EVL, HPK, MBL, NVY, PEW, PYA, RTL, RYL, WHT, YLW



Pawbulous  
Friends  
(PFT)



Repro Medical

### 2409

Silky All-Over Print Tee

Women's Modern Fit and True-Plus Fit

Our newest silky tees come in three adorable prints and can be worn alone or layered with your favorite WonderWink tops to make a bold fashion statement!

96% Rayon / 4% Spandex

XS - 2X (Size M length: 27 1/4")

PFT



### 2809

Multi Striped Tee

Women's Modern Fit and True-Plus Fit

Our best-selling silky tee, now in multi stripes! Same luxurious fabric blend, in an updated modern pattern. Be cozy, go bold!

96% Rayon / 4% Spandex

XS - 2X (Size M length: 27 1/4")

BWH



Unbelievably Soft





Owl Be There (OFE)



Ropa Médica

**2709**

Silky Novelty Print Tee

Women's Modern Fit and True-Plus Fit

How do you take our favorite silky tee to the next level? Add adorable, timeless graphics with cute, inspiring messages and sentiments!

Show your nurse pride in WonderWink's silky novelty print tees!

96% Rayon / 4% Spandex

XS - 2X (Size M length: 26 1/4")

SEP



Strength in Pink (SEP)

#PINK•FUND  
REAL HELP NOW

**2609**

Silky Novelty Print Tee

Women's Modern Fit and True-Plus Fit

How do you take our favorite silky tee to the next level? Add adorable, timeless graphics with cute, inspiring messages and sentiments!

Show your nurse pride in WonderWink's silky novelty print tees!

96% Rayon / 4% Spandex

XS - 2X (Size M length: 26 1/4")

OFE, OFT



Owl Be There (OFE)



Our Friends Tee (OFT)



## EXPECT THE **UNEXPECTED**

- Flattering fit.
- Eye catching details everywhere: adorable logo printed drawstring, triple-needle stitching, and WonderWink signature pocket.
- 52% Cotton / 45% Polyester / 3% Spandex



*Ropa Médica*

6108 SCT  
5108 SCT



6178 TGW  
5108 HPK



8908 TWH  
2009 RTL  
5908 TWH

*ropa Médica*

**VERITY  
6108**

Women's  
V-Neck Top

**NEW COLOR**

**SOFT CHARTREUSE**

**PATIENCE  
6208**

Women's  
Curved  
Notch-Neck Top

*Ropa Médica*

EXPECT THE **UNEXPECTED**

**CHARITY**  
**6308**  
Women's  
Fashion Y-Neck Top



**CONSTANCE**  
**8108**  
Women's  
Snap Jacket



*Ropa Médica*

**SERENITY**  
**8908**  
 Women's  
 Utility Zip Fashion Vest



**UTOPIA**  
**7008**  
 Women's  
 Fashion Lab Coat



**FAITH**  
**5108**  
 Women's  
 Multi Pocket Cargo Pant

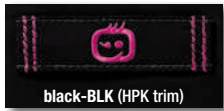
**NEW COLOR**  
**SOFT CHARTREUSE**



*Ropa Médica*



true white-TWH (TWH trim)



black-BLK (HPK trim)



black solid-BKS (BLK trim)



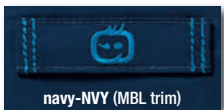
pewter-PEW (PYA trim)



pewter solid-PES (PEW trim)



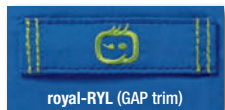
charcoal-CHA (GAP trim)



navy-NVY (MBL trim)



navy solid-NVS (NVY trim)



royal-RYL (GAP trim)



royal solid-RYS (RYL trim)



ceil blue-CBL (PYA trim)



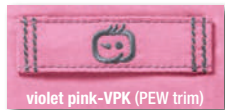
baja blue-BBL (NVY trim)



ceil blue solid-CLS (CBL trim)



hot pink-HPK (PEW trim)



violet pink-VPK (PEW trim)



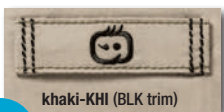
wine-WIN (NVY trim)



papaya-PYA (GAP trim)



sunset-SNT (PEW trim)



khaki-KHI (BLK trim)



green apple-GAP (RYL trim)



soft chartreuse-SCT (NVY trim)



pretty mint-PMT (PEW trim)



surgical green-SRG (PEW trim)



deep ocean-DPO (BBL trim)

# EXPECT THE UNEXPECTED

**GRACE**  
**5308**  
Women's  
Flare Leg Cargo Pant



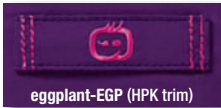
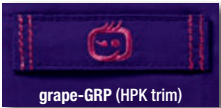
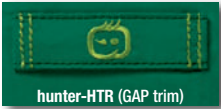
**RADIANCE**  
**5808**  
Women's  
Tailored Cargo Pant



**LOVE**  
**5908**  
Women's  
Utility Cargo Zip Jogger Pant



*Ropa Médica*



Convertible zipper opening



# MEN'S

**ANCHOR  
COLOR BLOCK  
6818**  
Men's  
V-Neck Block Top



**ANCHOR  
6718**  
Men's  
V-Neck Top



*Ropa Médica*



**6818**  
"ANCHOR COLOR BLOCK"



**HONOR  
6618**  
Men's  
Utility Top



**LOYAL  
5618**  
Men's  
Utility Pant



*Ropa Médica*

- 6618  
"HONOR"
- 6718  
"ANCHOR"
- 5618  
"LOYAL"

- true white**  
TWH (TWH trim)
- black**  
BLK (PEW trim)
- pewter**  
PEW (BLK trim)
- navy**  
NVY (RYL trim)
- royal**  
RYL (NVY trim)
- ceil Blue**  
CBL (NVY trim)
- wine**  
WIN (NVY trim)
- khaki**  
KHI (BLK trim)
- charcoal**  
CHA (RYL trim)
- sage**  
SGE (NVY trim)
- hunter**  
HTR (NVY trim)
- caribbean blue**  
CRB (PEW trim)
- real teal**  
RTL (NVY trim)
- galaxy blue**  
GBL (BLK trim)



VERITY  
6108

Women's  
V-Neck Top



PATIENCE  
6208

Women's  
Curved Notch-Neck Top



## TRIM GUIDE FOR WONDERFLEX



Women's Modern Fit and True-Plus Fit  
52% Cotton/45% Polyester/3% Spandex

Two front lower tilted patch pockets including one WonderWink signature triple pocket.

Triple-needle stitching at the dropped shoulder.

Two front body darts for superior shaping.

WonderFLEX LE badge above wearer's left pocket.

Vented sides.

Women's Modern Fit and True-Plus Fit  
52% Cotton/45% Polyester/3% Spandex

Two front lower tilted patch pockets including one WonderWink signature triple pocket.

Triple-needle stitching at the dropped shoulder.  
Curve shaped neck facing overlaps at center front.

Banded front yoke with WonderFLEX LE badge at wearer's left chest.

Vented sides.

XXS - 5X  
(Size M length: 27 ¼")

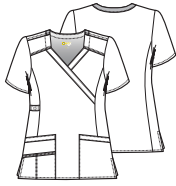
XXS - 5X  
(Size M length: 27 ¾")

true white - TWH	
black - BLK	black solid - BKS
pewter - PEW	pewter solid - PES
navy - NVY	navy solid - NVS
royal - RYL	royal solid - RYS
ceil blue - CBL	ceil blue solid - CLS
caribbean blue - CRB	caribbean blue solid - CRS
hot pink - HPK	
violet - VPK	
wine - WIN	
papaya - PYA	
sunset - SNT	
khaki - KHI	
charcoal - CHA	
<b>NEW!</b> soft chartreuse - SCT	XS-3X
green apple - GAP	
pretty mint - PMT	XS-3X
surgical green - SRG	
deep ocean - DPO	
hunter - HTR	
aqua - AQU	
real teal - RTL	
malibu blue - MBL	
baja blue - BBL	
galaxy blue - GBL	
windsor blue - WDS	
grape - GRP	
eggplant - EGP	
electric violet - EVL	
electric lilac - ELE	

TWH
BLK
PEW
NVY
RYL
CBL
CRB
HPK
WIN
PYA
KHI
CHA
GAP
HTR
AQU
RTL
MBL
GBL
WDS
GRP
EGP
EVL

**CHARITY**  
**6308**

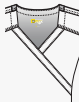
Women's  
Fashion Y-Neck Top



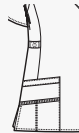
Women's Modern Fit and True-Plus Fit  
52% Cotton/45% Polyester/3% Spandex



Two front lower pockets including one WonderWink signature triple pocket.



Triple-needle stitching at the dropped shoulder. Front angular and modern neckline.



Front and back princess seams.

WonderFLEX LE Badge at wearer's right waist.

Vented sides.

XXS - 3X  
(Size M length: 27 1/2")

TWH
BLK
PEW
NVY
RYL
CBL
CRB
HPK

WIN
PYA

CHA
-----

GAP
-----

HTR
AQU
RTL
MBL

EGP
EVL

**CONSTANCE**  
**8108**

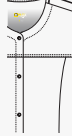
Women's  
Snap Jacket



Women's Modern Fit and True-Plus Fit  
52% Cotton/45% Polyester/3% Spandex



Two front lower pockets including one WonderWink signature triple pocket.



Curved front neckline.

Front yoke with two front princess seams gives subtle tailoring to the jacket.



WonderFLEX LE badge at wearer's right waist.

Rib-knit cuff.

XS - 3X  
(Size M length: 28 3/4")

TWH
BLK
PEW
NVY
RYL
CBL
CRB
HPK

WIN
PYA

CHA
-----

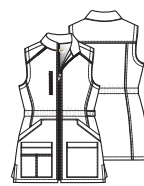
HTR
-----

RTL
-----

EGP
EVL

**SERENITY**  
**8908**

Women's  
Utility Zip Fashion Vest



Women's Modern Fit and True-Plus Fit  
52% Cotton/45% Polyester/3% Spandex



One zipper chest pocket, two slant side pockets and two front lower pockets including one WonderFlex signature triple pocket



Inside mesh pocket for cell phone.

Princess seaming for slimming silhouette and Internal bungee cord for an adjustable waist.



Vented sides.

XS - 3X  
(Size M length: 28 1/2")

TWH
BLK
PEW
NVY
RYL

CRB
-----

WIN
-----

**UTOPIA**  
**7008**

Women's  
Fashion Lab Coat



Women's Modern Fit and True-Plus Fit  
52% Cotton/45% Polyester/3% Spandex

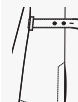


Two front lower pockets including one WonderWink signature triple pocket and one chest pocket.

Hidden shoulder loop.



WonderFLEX badge at wearer's left waist belt.



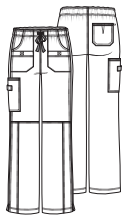
Wrap-around adjustable belt.  
Vented back.

XS - 3X  
(Size M length: 35 3/4")

TWH
-----

# FAITH 5108

Women's  
Multi Pocket Cargo Pant



Boot Cut

Women's Modern Fit and True-Plus Fit  
52% Cotton/45% Polyester/3% Spandex

Full elastic waist with full webbed drawstring.

Four front pockets including two lower tossed pockets with hook-and-loop fastener, one cargo pocket, and one back pocket with mock dart and signature ID bungee loop. Triple-needle stitching at pocket openings.

WonderFLEX LE badge at cargo pocket.

Double-needle stitching at knee, side seams, and along front seams adds extra durability.

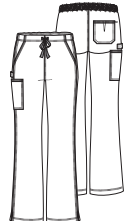
Vented bottom.

XXS - 5X  
Petite: XXS - 3X **P**  
Tall: XS - 3X **T**  
(Size M leg opening: 10")

true white - TWH	<b>P</b>	<b>T</b>
black - BLK	<b>P</b>	<b>T</b>
pewter - PEW	<b>P</b>	<b>T</b>
navy - NAVY	<b>P</b>	<b>T</b>
royal - RYL	<b>P</b>	<b>T</b>
cell blue - CBL	<b>P</b>	<b>T</b>
caribbean blue - CRB	<b>P</b>	<b>T</b>
hot pink - HPK	<b>P</b>	<b>T</b>
violet - VPK	<b>P</b>	<b>T</b>
wine - WIN	<b>P</b>	<b>T</b>
papaya - PYA	<b>P</b>	<b>T</b>
sunset - SNT	<b>P</b>	<b>T</b>
khaki - KHI	<b>P</b>	<b>T</b>
charcoal - CHA	<b>P</b>	<b>T</b>
<b>NEW!</b> soft chartreuse - SCT	<b>XS-3X</b>	<b>P: XS-3X</b>
green apple - GAP	<b>P</b>	<b>T</b>
pretty mint - PMT	<b>XS-3X</b>	<b>P: XS-3X</b>
surgical green - SRG	<b>P</b>	<b>T</b>
deep ocean - DPO	<b>P</b>	<b>T</b>
hunter - HTR	<b>P</b>	<b>T</b>
aqua - AQU	<b>P</b>	<b>T</b>
real teal - RTL	<b>P</b>	<b>T</b>
malibu blue - MBL	<b>P</b>	<b>T</b>
baja blue - BBL	<b>P</b>	<b>T</b>
galaxy blue - GBL	<b>P</b>	<b>T</b>
windsor blue - WDS	<b>P</b>	<b>T</b>
grape - GRP	<b>P</b>	<b>T</b>
eggplant - EGP	<b>P</b>	<b>T</b>
electric violet - EVL	<b>P</b>	<b>T</b>
electric lilac - ELE	<b>P</b>	<b>T</b>

# GRACE 5308

Women's  
Flare Leg Cargo Pant



Flare Leg

Women's Modern Fit and True-Plus Fit  
52% Cotton/45% Polyester/3% Spandex

Back elastic waist with full webbed drawstring.

Two front pockets, one cargo, and one back pocket with mock dart and signature ID bungee loop at top corner. Triple-needle stitching at front pocket openings.

WonderFLEX LE badge at wearer's right side.

Double-needle stitching at side seams adds extra durability.

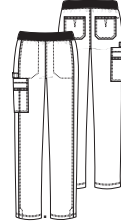
Vented bottom.

XXS - 5X  
Petite: XXS - 3X **P**  
Tall: XS - 3X **T**  
(Size M leg opening: 10 3/4")

TWH	<b>P</b>	<b>T</b>
BLK	<b>P</b>	<b>T</b>
PEW	<b>P</b>	<b>T</b>
NAVY	<b>P</b>	<b>T</b>
RYL	<b>P</b>	<b>T</b>
CBL	<b>P</b>	<b>T</b>
CRB	<b>P</b>	<b>T</b>
HPK	<b>P</b>	<b>T</b>
WIN	<b>P</b>	<b>T</b>
PYA	<b>P</b>	<b>T</b>
KHI	<b>P</b>	<b>T</b>
CHA	<b>P</b>	<b>T</b>
GAP	<b>P</b>	<b>T</b>
HTR	<b>P</b>	<b>T</b>
AQU	<b>P</b>	<b>T</b>
RTL	<b>P</b>	<b>T</b>
MBL	<b>P</b>	<b>T</b>
GBL	<b>P</b>	<b>T</b>
WDS	<b>P</b>	<b>T</b>
GRP	<b>P</b>	<b>T</b>
EGP	<b>P</b>	<b>T</b>
EVL	<b>P</b>	<b>T</b>

# RADIANCE 5808

Women's  
Tailored Cargo Pant



Slim Cut Leg

Women's Modern Fit and True-Plus Fit  
52% Cotton/45% Polyester/3% Spandex

DTM rib-knit comfort yoga waist with interior control tie.

Two side entry side pockets, two back pockets and one signature multi-functional cargo pocket.

WonderFLEX LE badge.

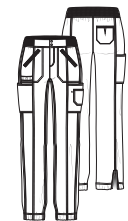
Vented bottom.

XS - 3X  
Petite: XS - 3X **P**  
(Size M leg opening: 7 1/4")

BLK	<b>P</b>
PEW	<b>P</b>
NAVY	<b>P</b>
RYL	<b>P</b>
CRB	<b>P</b>
WIN	<b>P</b>

# LOVE 5908

Women's  
Utility Cargo Zip Jogger Pant



Jogger Leg

Women's Modern Fit and True-Plus Fit  
52% Cotton/45% Polyester/3% Spandex

Fully constructed waistband with rib knit, zipper and snap button closure.

Two zipper closure front pockets, two large cargo pockets, one accessory pocket, and one back pocket.

WonderFLEX LE badge.

Elasticized bottom jogger hem with along back seam.

**Inseam length**  
Regular : 30", Petite : 27 1/2", Tall : 32"

XS - 3X  
Petite: XS - 3X **P**  
Tall: XS - 3X **T**  
(Size M leg opening: 5 1/4")

TWH	<b>P</b>	<b>T</b>
BLK	<b>P</b>	<b>T</b>
PEW	<b>P</b>	<b>T</b>
NAVY	<b>P</b>	<b>T</b>
RYL	<b>P</b>	<b>T</b>
CRB	<b>P</b>	<b>T</b>
WIN	<b>P</b>	<b>T</b>

# HONOR 6618

Men's  
Utility Top



Men's Classic Fit  
52% Cotton/45% Polyester/3% Spandex



One chest pocket with pen slot and cell phone pocket with media port and WonderWink snap closure. Sleeve pen slot.



Curved shirt tail hem with longer back length.

WonderFLEX LE badge at wearer's left bottom hem.

XS - 3X  
(Size M length: front-30 1/2", back-31 1/4")

true white - **TWH**

black - **BLK**

pewter - **PEW**

navy - **NVY**

royal - **RYL**

cell blue - **CBL**

caribbean blue - **CRB**

wine - **WIN**

khaki - **KHI**

charcoal - **CHA**

sage - **SGE**

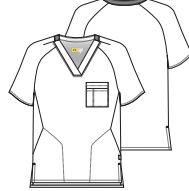
hunter - **HTR**

real teal - **RTL**

galaxy blue - **GBL**

# ANCHOR 6718

Men's  
V-Neck Top



Men's Classic Fit  
52% Cotton/45% Polyester/3% Spandex



Two invisible front lower top loading pockets and one double chest pocket with pen slot.



Raglan sleeve with shoulder dart.



WonderWink logo tag at side.

Vented sides.

XS - 3X  
(Size M length: front-29", back-30 1/2")

**BLK**

**PEW**

**NVY**

**RYL**

**CBL**

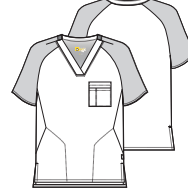
**WIN**

**KHI**

**HTR**

# ANCHOR COLOR BLOCK 6818

Men's  
V-Neck Block Top



Men's Classic Fit  
52% Cotton/45% Polyester/3% Spandex



Two invisible front lower top loading pockets and one double chest pocket with pen slot.



Contrast raglan sleeve with shoulder dart.



WonderWink logo tag at side.

Vented sides.

XS - 3X  
(Size M length: front-29", back-30 1/2")

**BLK**

**PEW**

**PEW**

**BLK**

**NVY**

**CBL**

**RYL**

**PEW**

**WIN**

**NVY**

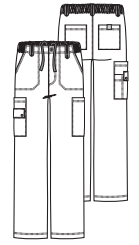
**HTR**

**NVY**

**HTR**

# LOYAL 5618

Men's  
Utility Pant



Straight Leg

Men's Classic Fit  
52% Cotton/45% Polyester/3% Spandex



Full inner drawstring with flat front and 3/4 elastic waist. Rise sits just below natural waistline.



Button front with functional zipper fly. Five belt loops total with one extended utility loop to hook your keys or badge reel.



Two front slash pockets, two cargo pockets including double pocket and WonderWink snap closure, and two back pockets with LE badge and hook-and-loop fastener.

XS - 3X  
Short: XS - 3X **(S)**  
Tall: S - 3X **(T)**  
(Size M leg opening: 9 3/4")

**TWH**

**(T)**

**BLK**

**(S)**

**(T)**

**PEW**

**(S)**

**(T)**

**NVY**

**(S)**

**(T)**

**RYL**

**(S)**

**(T)**

**CBL**

**(S)**

**(T)**

**CRB**

**(S)**

**(T)**

**WIN**

**(T)**

**KHI**

**(T)**

**CHA**

**(T)**

**SGE**

**(T)**

**HTR**

**(T)**

**RTL**

**(T)**

**GBL**

**(T)**

Ropa Médica



# PRINTS

97% Cotton / 3% Spandex

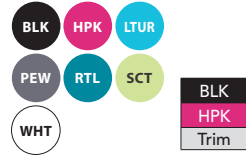
**NEW!**

## 6178 TGW Tropical Getaway



XS-3X  
V-Neck  
Print Top

COORDINATING COLORS



**NEW!**

## 6178 SDZ SaturDaisy



XS-3X  
V-Neck  
Print Top

COORDINATING COLORS





**NEW!**  
**6178 ANI**  
 Animal Instinct



- COORDINATING COLORS
- BLK
  - CBL
  - ELE
  - HPK
  - PMT
  - PYA
  - RYL
  - WHT
  - BLK
  - HPK
  - Trim



**NEW!**  
**6178 DOT**  
 Dot Drops



- COORDINATING COLORS
- EVL
  - PEW
  - PMT
  - PYA
  - RTL
  - WHT
  - PEW
  - PMT
  - Trim

*Medica*

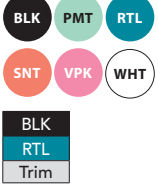
# 6178 MCB

Mosaic Blossom



XS-3X  
V-Neck  
Print Top

COORDINATING COLORS



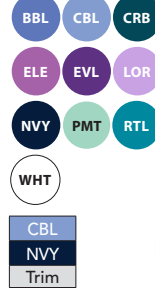
# 6178 ART

Artistic Garden



XS-3X  
V-Neck  
Print Top

COORDINATING COLORS



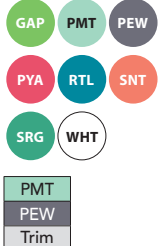
# 6178 SRR

Spring Rain



XS-3X  
V-Neck  
Print Top

COORDINATING COLORS



*Ropa Médica*





# PRINTS

97% Cotton / 3% Spandex

## 6178 SWW

Sweet Paws



XS-5X  
V-Neck  
Print Top

COORDINATING COLORS



## 6278 IBQ

Indigo Bouquet



XS-3X  
Curved  
Notch-Neck  
Print Top

COORDINATING COLORS



# Ropa Médica

## 6278 HKY

Halo Sky



XS-3X  
Curved  
Notch-Neck  
Print Top

COORDINATING COLORS



# 6178 FMN

Forget Me Not



XS-5X  
V-Neck  
Print Top

COORDINATING COLORS

- BBL CBL GBL
- MBL NVY PYA
- RYL TWH
- BBL
- NVY
- Trim



# 6178 MYM

Mystic Merlin



XS-5X  
V-Neck  
Print Top

COORDINATING COLORS

- BLK DPO EVL
- EGP GAP HPK
- PEW TWH VPK
- WIN
- BLK
- RSP
- Trim



Ropa Médica

# 6178 FNU

Fade Into You




XS-5X  
V-Neck  
Print Top

COORDINATING COLORS

- BBL CBL CRB
- DPO HTR NVY
- PEW RTL RYL
- TWH
- PEW
- CBL
- Trim



 Animal fur & hair do not stick to 4-Stretch.



# Four-Stretch<sup>4</sup>

## WONDERWINK FOUR STRETCH<sup>®</sup>

### FEATURES:

- A revolution in **easy care** fabric technology
- Fabric wicks moisture for **maximum comfort** and **breathability**
- Mechanical stretch allows for **ease of movement**
- Fabric retains its **color vibrancy** after washing
- WonderWink's **signature utility features** such as secret pockets, utility loops and signature ID bungee loop
- Women's Modern Fit and True-Plus Fit



*Ropa Médica*

- 4-Way Stretch for maximum performance
- Double stitching for maximum durability
- Special wicking features for maximum moisture management

**HIGH  
PERFORMANCE  
LOW  
MAINTENANCE**

6114 PEW  
5114 PEW



# Four-Stretch<sup>4</sup>

**6114**  
Women's  
Stylized V-Neck  
Flexi Top



**6214**  
Women's  
Sporty V-Neck Top



Ropa Médica



**6414**  
Women's  
Y-Neck  
Multi-Pocket Top



**6514**  
Women's  
Mock Wrap  
Knit Panel Top

*Ropa Médica*



**6914**  
Women's  
Sporty Zip Front Top



**7004**  
Women's  
4-Stretch  
Lab Coat

*Ropa Médica*



**8114**  
Women's  
Sporty Button Front  
Jacket

**5114**  
Women's  
Flexi Waist  
Pant



**5214**  
Women's  
Sporty  
Cargo Pant



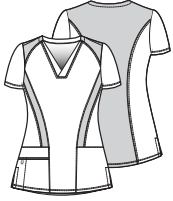
*Ropa Médica*

**5514**  
Women's  
Fold Over  
Knit Waist  
Pant



# 6114

## Women's Stylized V-Neck Flexi Top



Women's Modern Fit and True-Plus Fit  
100% Polyester

- Two front lower pockets including one WonderWink signature triple pocket with signature ID bungee loop.
- Dyed-to-match rib knit front panels and back panel.
- Vented sides.

XS - 3X  
(Size M length: 27 1/4")

BLK	T
PEW	T
NVY	T
RYL	T

EVL	T
-----	---

RED	T
-----	---

# 6214

## Women's Sporty V-Neck Top



Women's Modern Fit and True-Plus Fit  
100% Polyester

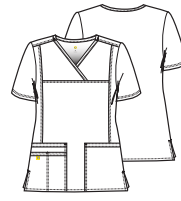
- Two front lower pockets with hidden mesh pocket and hidden three part utility loop.
- Angled yoke at shoulders.
- Locker loop and logo at stylized back yoke.
- Shaping panels at waist and sides.
- Vented sides.

XS - 3X  
4X - 5X   
(Size M length: 27 1/4")

white - WHT	<input checked="" type="checkbox"/>	D
black - BLK	<input checked="" type="checkbox"/>	T
pewter - PEW	<input checked="" type="checkbox"/>	D
navy - NVY	<input checked="" type="checkbox"/>	T
royal - RYL	<input checked="" type="checkbox"/>	T
ceil blue - CBL	<input checked="" type="checkbox"/>	T
graphite - GPH		T
olive - OLV		T
surgical green - SRG		T
hunter - HTR	<input checked="" type="checkbox"/>	T
caribbean blue - CRB	<input checked="" type="checkbox"/>	T
aruba blue - ARB		T
real teal - RTL	<input checked="" type="checkbox"/>	T
malibu blue - MBL		T
galaxy blue - GBL	<input checked="" type="checkbox"/>	T
eggplant - EGP		D
electric violet - EVL		T
light Orchid - LOR		T
lavender - LAV		T
wine - WIN	<input checked="" type="checkbox"/>	T
candy pink - CNK		T
strawberry - STB		T
red - RED		T
passion fruit - PAF		T

# 6414

## Women's Y-Neck Multi-Pocket Top



Women's Modern Fit and True-Plus Fit  
100% Polyester

- Two front lower pockets including one WonderWink signature triple pocket with signature ID bungee loop.
- Double-needle stitching at front seams, shoulders, and pockets.
- Front seaming for shaping
- Vented sides.

XS - 3X  
(Size M length: 26 1/4")

WHT	D
BLK	D
PEW	T
NVY	D
RYL	D
CBL	D
GPH	T
HTR	D
CRB	T
RTL	D
EVL	T
WIN	T

# 6514

## Women's Mock Wrap Knit Panel Top



Women's Modern Fit and True-Plus Fit  
100% Polyester

- Two front lower pockets including one WonderWink signature pocket with signature ID bungee loop and hidden mesh pocket.
- Double-needle stitching at front seams, shoulders, and pockets.
- Black flexible knit side panels with flat-locked seams.
- Stylized back yoke with locker loop.

XS - 3X  
(Size M length: 27 3/4")

WHT	D
BLK	D
PEW	T
NVY	D
RYL	D
CBL	D
RTL	D
MBL	T
EGP	D
EVL	T
STB	T
RED	T





# 6914

## Women's Sporty Zip Front Top



Women's Modern Fit and True-Plus Fit  
100% Polyester



Two front lower pockets including one quadruple pocket with signature ID bungee loop.



Zip front opening with silicone WonderWink logo zipper pull.



Contrast black side panels (except WHT on WHT, NVY on NVY)

Vented sides.

XS - 3X  
(Size M length: 27 1/4")

WHT	T
BLK	D
PEW	T
NVY	D
RYL	D

# 8114

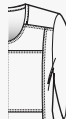
## Women's Sporty Button Front Jacket



Women's Modern Fit and True-Plus Fit  
100% Polyester



Two front lower pockets including one WonderWink signature triple pocket.



Dropped shoulder.



Front princess seams for shaping.



Rib-knit cuff that can be worn tucked in or out.

XS - 3X  
(Size M length: 28 1/4")

WHT	D
BLK	D
PEW	T
NVY	D
RYL	D
CBL	D
GPH	T

HTR	T
CRB	T

RTL	T
-----	---

EVL	T
-----	---

WIN	T
-----	---

# 7004

## Women's 4-Stretch Lab Coat



Women's Modern Fit and True-Plus Fit  
100% Polyester



Two front lower pockets including WonderWink signature pocket with signature ID bungee loop and mesh coin pocket.



Princess seaming and a mock belt at the waist.



An adjustable back button closure.

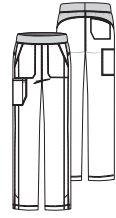
Vented back.

XS - 2X  
(Size M length: 32".)

WHT	D
BLK	T
NVY	T
RYL	T
GPH	T

# 5114

## Women's Flexi Waist Pant



Slim Leg

Women's Modern Fit and True-Plus Fit  
100% Polyester



Dyed to match rib knit waistband and back yoke.



Two front slash pockets, one cargo pocket with pen slot and yellow bungee, and one back pocket.



Vented bottom.

XS - 3X  
(Size M leg opening: 7 3/4")

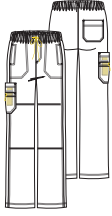
BLK	T
PEW	T
NVY	T
RYL	T

EVL	T
-----	---

RED	T
-----	---

# 5214

## Women's Sporty Cargo Pant



Boot Cut

# 5514

## Women's Fold Over Knit Waist Pant



Flare Leg

Women's Modern Fit and True-Plus Fit  
100% Polyester

- Full elastic waistband with WonderWink drawstring.
- Two front reinforced seam pockets, one double cargo pocket with hidden mesh cell phone pocket, and one back patch pocket.
- Forward side seam.
- Double knee stitch detail.
- Vented bottom.

XS - 3X  
4X - 5X **Y**  
Petite: XS - 3X **P**  
Tall: XS - 3X **T**  
(Size M leg opening: 9 1/4")

Women's Modern Fit and True-Plus Fit  
100% Polyester

- Black double-fold flexible knit waist band that provides superior tummy control. Knit waist allows for customizable fit in the rise of the pants.
- Two front slash pockets.
- WonderWink colorful dyed-to-match logo at side waist.
- Double-needle stitching throughout pant for durability.
- Vented bottom.

XS - 3X  
Petite: XS - 3X **P**  
(Size M leg opening: 10 3/4")

white - WHT	<b>Y P T</b>	<b>D</b>
black - BLK	<b>Y P T</b>	<b>T</b>
pewter - PEW	<b>Y P T</b>	<b>D</b>
navy - NVY	<b>Y P T</b>	<b>T</b>
royal - RYL	<b>Y P T</b>	<b>T</b>
ceil blue - CBL	<b>Y P T</b>	<b>T</b>
graphite - GPH	<b>P T</b>	<b>T</b>
olive - OLV	<b>P</b>	<b>T</b>
surgical green - SRG	<b>P</b>	<b>T</b>
hunter - HTR	<b>Y P T</b>	<b>T</b>
caribbean blue - CRB	<b>Y P T</b>	<b>T</b>
aruba blue - ARB	<b>P</b>	<b>T</b>
real teal - RTL	<b>Y P T</b>	<b>T</b>
malibu blue - MBL	<b>P T</b>	<b>T</b>
galaxy blue - GBL	<b>Y P T</b>	<b>T</b>
eggplant - EGP	<b>P T</b>	<b>D</b>
electric violet - EVL	<b>P T</b>	<b>T</b>
light Orchid - LOR	<b>P</b>	<b>T</b>
lavender - LAV	<b>P T</b>	<b>T</b>
wine - WIN	<b>Y P T</b>	<b>T</b>
candy pink - CNK	<b>P</b>	<b>T</b>
strawberry - STB	<b>P T</b>	<b>T</b>
red - RED	<b>P T</b>	<b>T</b>
passion fruit - PAF	<b>P</b>	<b>T</b>

WHT	<b>P</b>	<b>D</b>
BLK	<b>P</b>	<b>D</b>
PEW	<b>P</b>	<b>T</b>
NVY	<b>P</b>	<b>D</b>
RYL	<b>P</b>	<b>D</b>
CBL	<b>P</b>	<b>D</b>
RTL	<b>P</b>	<b>D</b>
MBL	<b>P</b>	<b>T</b>
EGP	<b>P</b>	<b>D</b>
EVL	<b>P</b>	<b>T</b>
STB	<b>P</b>	<b>T</b>
RED	<b>P</b>	<b>T</b>



WonderWink will donate a portion of sales to Best Friends Animal Society on our pet prints. Best Friends Animal Society is focused on stopping the killing of nearly 4 million pets in shelters all across America.

**NEW!**



## 6217 SLP Split Splat



XS-3X  
Sporty V-Neck  
Print Top

COORDINATING COLORS



*Popa Médica*





# Four-Stretch<sup>4</sup> PRINTS

100% Polyester Stretch

Animal fur & hair do not stick to 4-Stretch.

**NEW!**



## 6217 FDI

Fido Fighter



XS-3X  
Sporty V-Neck  
Print Top

COORDINATING COLORS



**NEW!**

## 6717 FRZ

Floral Frenzy



XS-3X  
Mock Wrap Knit Panel  
Print Top

COORDINATING COLORS



# Ropa Médica





WonderWink will donate a portion of sales to Best Friends Animal Society on our pet prints. Best Friends Animal Society is focused on stopping the killing of nearly 4 million pets in shelters all across America.



## 6217 SAD

Scrub-A-Dub



XS-3X  
Sporty V-Neck  
Print Top

COORDINATING COLORS



## 6727 HYP

Hypnotic



XS-3X  
Stylized  
V-Neck Flexi  
Print Top

COORDINATING COLORS



## 6217 PLM

Playmates



XS-3X  
Sporty V-Neck  
Print Top

COORDINATING COLORS





**6217 PNH**  
Paws N Hearts



XS-3X  
Sporty V-Neck  
Print Top

COORDINATING COLORS



**6217 PFR**  
Pawbulous Friends



XS-3X  
Sporty V-Neck  
Print Top

COORDINATING COLORS



*Ropa Médica*

**6217 PYD**  
Playdate



XS-3X  
Sporty V-Neck  
Print Top

COORDINATING COLORS



# 6717 HEA

Heavenly Blues



XS-3X  
Mock Wrap Knit  
Panel Print Top

COORDINATING COLORS



# 6217 GMB

Give Me Butterflies



XS-3X  
Sporty V-Neck  
Print Top

COORDINATING COLORS



Ropa Médica

# 6717 CMY

Color Me Pretty



XS-3X  
Mock Wrap Knit  
Panel Print Top

COORDINATING COLORS





Animal fur & hair do not stick to 4-Stretch.

# 6217 BEL

Belle Flower



XS-3X  
Sporty V-Neck  
Print Top

COORDINATING COLORS

- ARB
- CBL
- CRB
- MBL
- NVY
- PEW
- RTL
- RYL
- WHT



# 6217 WDH

Wild Hearts



XS-3X  
Sporty V-Neck  
Print Top

COORDINATING COLORS

- ARB
- BLK
- RTL



*Pop & Méandre*



#### WONDERWINK ORIGINS™ FEATURES:

- Great value
- A trend-right lineup of our proven **best sellers**
- **Signature** and **easy going** Poly/Cotton blend
- **It's all in the details.** Styling includes brilliant utility features: bungee cords, signature pockets, utility loops and secret hidden pockets
- **Extensive color choices:** 25 vibrant hues with the latest color trends

Ropa Medica

6016 YLW  
2809 BWH  
5046 YLW

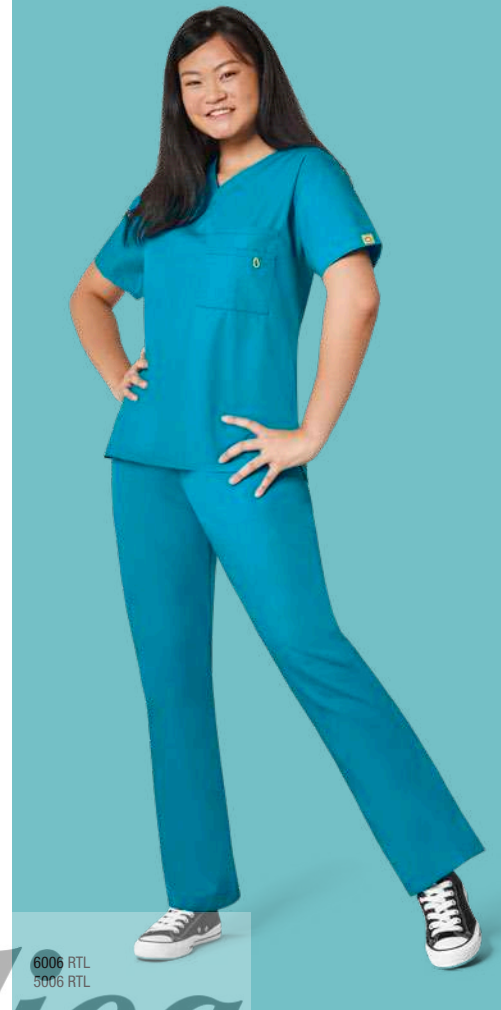




6017 BFZ  
5046 ORS



6026 RED  
5026 BLK



6006 RTL  
5006 RTL

# Ropa Médica



6026 GAP  
5046 GAP



6006 PEW  
5006 PEW



6026 GRP  
5016 HPK



**THE BRAVO  
6016**  
Women's  
V-Neck Top



**THE ALPHA  
6006**  
Unisex  
V-Neck Top



*Ropa Médica*

# WHERE STYLE BEGINS



**THE CHARLIE  
6026**  
Women's  
Y-Neck Fashion Top



**THE GOLF  
6056**  
Women's  
Fashion Waist Top



CHC - CHC/GAP



EGP - EGP/HPK



BLK - BLK/MBL



CBL - CBL/NVY



CRB - CRB/RTL



GRP - GRP/HPK



HTR - HTR/GAP



GAP - GAP/PEW



HPK - HPK/PEW



GBL - GBL/CBL



KHI - KHI/BLK



WIN - WIN/PEW



YLW - YLW/BLK



LAV - LAV/GRP



MBL - MBL/NVY



ORS - ORS/PEW



NVY - NVY/MBL



RTL - RTL/GAP



PEW - PEW/HPK



PYA - PYA/PEW



RED - RED/BLK



RYL - RYL/GAP



SBZ - SBZ/PEW



WHT - WHT/WHT



SGI - SGI/PYA

Ropa Médica



**THE KILO  
6086**  
Women's  
Zip Front Short  
Sleeve Jacket



**THE LIMA  
6096**  
Women's  
Knit Panel  
V-Neck Top



*Ropa Médica*

# WHERE COMFORT BEGINS

**THE WHISKEY  
9006**  
Women's  
Partial Zip  
Front Dress



**THE DELTA  
8006**  
Unisex  
Snap Front  
Jacket



*Ropa Médica*

**THE PAPA  
5006**  
Unisex Seamless Pant

**THE PAPA  
5006**  
Unisex  
Seamless  
Pant

*Ropa Médica*



# WHERE FASHION BEGINS



**THE QUEBEC  
5016**  
Women's  
Cargo Pant



**THE ROMEO  
5026**  
Women's  
Flare Leg  
Cargo Pant

# Ropa Médica

**THE SIERRA  
5036**  
Unisex  
Drawstring  
Cargo Pant



**THE TANGO  
5046**  
Women's  
Straight Leg  
Fashion Utility  
Pant



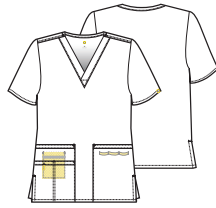
# THE ALPHA 6006

Unisex  
V-Neck Top



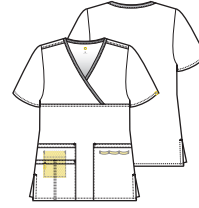
# THE BRAVO 6016

Women's  
V-Neck Top



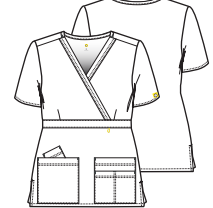
# THE CHARLIE 6026

Women's  
Y-Neck Fashion Top



# THE GOLF 6056

Women's  
Fashion Waist Top



Unisex Fit  
65% Polyester / 35% Cotton

- One WonderWink signature triple chest pocket.
- Signature ID bungee loop.
- Vented sides.

Women's Modern Fit and True-Plus Fit  
65% Polyester / 35% Cotton

- Two front lower pockets including one WonderWink signature triple pocket with hidden mesh pocket.
- Signature ID bungee loop.
- Hidden three part utility loop.
- Vented sides.

Women's Modern Fit and True-Plus Fit  
65% Polyester / 35% Cotton

- Two front lower pockets including one WonderWink signature triple pocket with a hidden mesh pocket.
- Signature ID bungee loop.
- Hidden three part utility loop.
- Vented sides.

Women's Modern Fit and True-Plus Fit  
65% Polyester / 35% Cotton

- Two front lower pockets including one signature WonderWink pocket, and one Peek-a-Boo pocket above wearer's right pocket.
- Signature ID bungee loop and Hidden three part utility loop.
- Front mock belt with bust darts for shaping.
- Sporty stitching at neckline and pockets.
- Vented sides.

XS - 5X  
(Size M length: 28 3/4")

XXS - 5X  
(Size M length: 27 3/4")

XXS - 5X  
(Size M length: 26 3/4")

XXS - 3X  
(Size M length: 27 3/4")

Ropa Médica

BLK
PEW
NVY
RYL
CBL

RTL
-----

WIN
-----

HTR
-----

white - WHT
black - BLK
pewter - PEW
navy - NVY
royal - RYL
ceil blue - CBL
seabreeze - SBZ <span>XXS - 3X</span>
real teal - RTL
malibu blue - MBL
galaxy blue - GBL
grape - GRP
eggplant - EGP
lavender - LAV <span>XXS - 3X</span>
hot pink - HPK
red - RED
wine - WIN
sangria - SGI <span>XS - 3X</span>
papaya - PYA <span>XS - 3X</span>
orange sherbet - ORS
khaki - KHI
chocolate - CHC
yellow - YLW
green apple - GAP
hunter - HTR
caribbean blue - CRB

WHT
BLK
PEW
NVY
RYL
CBL
SBZ <span>XXS - 3X</span>
RTL
MBL
GBL
GRP
EGP
LAV <span>XXS - 3X</span>
HPK
RED
WIN
SGI <span>XS - 3X</span>
PYA <span>XS - 3X</span>
ORS
KHI
CHC
YLW
GAP
HTR
CRB

WHT
BLK
PEW
NVY
RYL
CBL
RTL
MBL
GBL
GRP
EGP
LAV <span>XXS - 3X</span>
HPK
RED
WIN
ORS
KHI
CHC
YLW
GAP
HTR



# THE KILO 6086

Women's  
Zip Front Short Sleeve Jacket



Women's Modern Fit and True-Plus Fit  
65% Polyester / 35% Cotton



Two front lower pockets including one WonderWink signature triple pocket with hidden mesh pocket.



Front and back princess seams for a very flattering fit.



Dyed-to-match front zipper with rubber WonderWink logo zipper pull.



Vented sides.

XS - 3X  
(Size M length: 27 3/4")

WHT
BLK
PEW
NVY
RYL
CBL

HPK

WIN

# THE LIMA 6096

Women's  
Knit Panel V-Neck Top



Women's Modern Fit and True-Plus Fit  
65% Polyester / 35% Cotton with 100% Polyester knit



Two front lower pockets including one WonderWink signature triple pocket with signature ID bungee loop at pocket, hidden mesh pocket and hidden three part utility loop.



Contour black knit side panels for enhanced fit and added comfort. Navy has navy panels.

Vented sides.

XS - 3X  
(Size M length: 27 3/4")

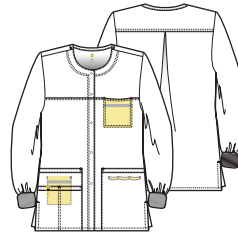
BLK
PEW
NVY
RYL

HPK

GAP

# THE DELTA 8006

Unisex  
Snap Front Jacket



Unisex Fit  
65% Polyester / 35% Cotton



Two front lower pockets including one WonderWink signature triple pocket with hidden mesh pocket, signature ID bungee loop, and hidden three part utility loop. Two invisible chest pockets.



Snap button front



Vented sides.

XS - 5X  
(Size M length: 29 3/4")

WHT
BLK
PEW
NVY
RYL
CBL

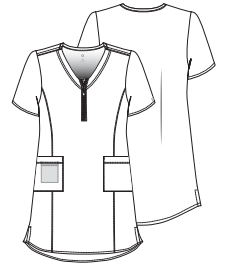
RTL

WIN

CRB

# THE WHISKEY 9006

Women's  
Partial Zip Front Dress



Women's Modern Fit and True-Plus Fit  
65% Polyester / 35% Cotton



Two front lower top loading pockets including a hidden cell phone pocket.



Soft V-shaped neckline with zipper pull.



Vented sides.

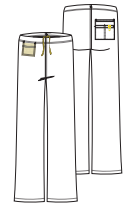
XS - 3X  
(Size M length: Front - 40" Back - 42")

WHT
-----

RopaMedica

# THE PAPA 5006

Unisex  
Drawstring Cargo Pant



Straight Leg

Unisex Fit  
65% Polyester / 35% Cotton



Full elastic with drawstring waist.



One hidden front inside pocket and one WonderWink signature triple back pocket.



Convertible drawstring - placement allows drawstring to be tucked inside the pant or displayed outside of it.



Signature ID bungee loop.

XXS - 5X  
Petite: XS - 3X **P**  
Tall: XS - 3X **T**  
(Size M leg opening: 10 1/2")

BLK	<b>P</b> <b>T</b>
PEW	<b>P</b> <b>T</b>
NVY	<b>P</b> <b>T</b>
RYL	<b>P</b> <b>T</b>
CBL	<b>P</b> <b>T</b>

RTL	<b>P</b> <b>T</b>
-----	-------------------

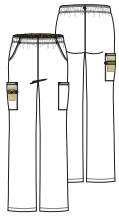
WIN	<b>P</b> <b>T</b>
-----	-------------------

HTR	<b>P</b> <b>T</b>
-----	-------------------



# THE QUEBEC 5016

Women's  
Elastic Cargo Pant



Boot Cut

Women's Modern Fit and True-Plus Fit  
65% Polyester / 35% Cotton



Full elastic waistband that can be worn flipped down.



Two front pockets and two cargo pockets including one WonderWink signature triple pocket with hidden mesh cell phone pocket.



Signature ID bungee loop.

XXS - 5X  
Petite: XS - 3X **P**  
Tall: XS - 3X **T**  
(Size M leg opening: 9 1/2")

WHT	<b>P T</b>
BLK	<b>P T</b>
PEW	<b>P T</b>
NVY	<b>P T</b>
RYL	<b>P T</b>
CBL	<b>P T</b>
RTL	<b>P T</b>
MBL	<b>P T</b>
GBL	<b>P T</b>
EGP	<b>P T</b>
LAV	<b>XXS - 3X P T</b>
HPK	<b>P T</b>
RED	<b>P T</b>
WIN	<b>P T</b>
KHI	<b>P T</b>
CHC	<b>P T</b>
GAP	<b>P T</b>
HTR	<b>P T</b>
CRB	<b>P T</b>

# THE ROMEO 5026

Women's  
Flare Leg Cargo Pant



Flare Leg

Women's Modern Fit and True-Plus Fit  
65% Polyester / 35% Cotton



Flare leg cargo pant with half back elastic waistband. Convertible drawstring placement allows drawstring to be tucked inside the pant or displayed outside of it.



Two front pockets and one WonderWink signature triple cargo pocket with hidden mesh cell phone pocket and signature ID bungee loop at cargo pocket.



Vented bottom.

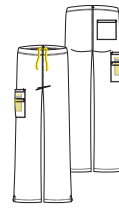
\*PVA and SGI are not available in XXS Petite and all Tall sizes.  
\*\*KHI is not available in XXS Petite.

XXS - 5X  
Petite: XXS - 3X **P**  
Tall: XS - 3X **T**  
(Size M leg opening: 10 3/4")

white - WHT	<b>P T</b>
black - BLK	<b>P T</b>
pewter - PEW	<b>P T</b>
navy - NVY	<b>P T</b>
royal - RYL	<b>P T</b>
ceil blue - CBL	<b>P T</b>
seabreeze - SBZ	<b>XXS - 3X P T</b>
real teal - RTL	<b>P T</b>
malibu blue - MBL	<b>P T</b>
galaxy blue - GBL	<b>P T</b>
grape - GRP	<b>P T</b>
eggplant - EGP	<b>P T</b>
lavender - LAV	<b>XXS - 3X P T</b>
hot pink - HPK	<b>P T</b>
red - RED	<b>P T</b>
wine - WIN	<b>P T</b>
sangria - SGI*	<b>XS - 3X P T</b>
papaya - PYA*	<b>XS - 3X P T</b>
orange sherbet - ORS	<b>P T</b>
khaki - KHI**	<b>P T</b>
chocolate - CHC	<b>P T</b>
yellow - YLW	<b>P T</b>
green apple - GAP	<b>P T</b>
hunter - HTR	<b>P T</b>
caribbean blue - CRB	<b>P T</b>

# THE SIERRA 5036

Unisex  
Drawstring Pant



Straight Leg

Unisex Fit  
65% Polyester / 35% Cotton



Drawstring waist. Convertible drawstring placement allows drawstring to be tucked inside the pant or displayed outside of it.



One WonderWink signature triple cargo pocket with hidden mesh cell phone pocket and one back pocket.



Vented bottom.

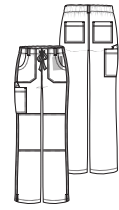
\*KHI is not available in XXS Petite.

XXS - 3X  
Petite: XXS - 3X **P**  
Tall: XS - 3X **T**  
(Size M leg opening: 9 3/4")

WHT	<b>P T</b>
BLK	<b>P T</b>
PEW	<b>P T</b>
NVY	<b>P T</b>
RYL	<b>P T</b>
CBL	<b>P T</b>
MBL	<b>P T</b>
GBL	<b>P T</b>
EGP	<b>P T</b>
HPK	<b>P T</b>
RED	<b>P T</b>
WIN	<b>P T</b>
KHI*	<b>P T</b>
CHC	<b>P T</b>
GAP	<b>P T</b>
HTR	<b>P T</b>

# THE TANGO 5046

Women's  
Straight Leg Fashion Utility Pant



Straight Leg

Women's Modern Fit and True-Plus Fit  
65% Polyester / 35% Cotton



Full dyed-to-match drawstring with easy elastic at waist. Belt loops at waist.



Two front pockets with hidden pocket, one cargo pocket, one Peek-a-Boo pocket above cargo pocket, and two back pockets.



Double-stitched knee and side seams.



Vented bottom.

XXS - 3X  
Petite: XXS - 3X **P**  
Tall: XS - 3X **T**  
(Size M leg opening: 10")

WHT	<b>P T</b>
BLK	<b>P T</b>
PEW	<b>P T</b>
NVY	<b>P T</b>
RYL	<b>P T</b>
CBL	<b>P T</b>
SBZ	<b>P T</b>
RTL	<b>P T</b>
MBL	<b>P T</b>
GBL	<b>P T</b>
GRP	<b>P T</b>
EGP	<b>P T</b>
HPK	<b>P T</b>
RED	<b>P T</b>
WIN	<b>P T</b>
ORS	<b>P T</b>
KHI	<b>P T</b>
CHC	<b>P T</b>
YLW	<b>P T</b>
GAP	<b>P T</b>
HTR	<b>P T</b>



# PRINTS

100% Cotton Poplin

**NEW!**

## 6017 PFF

Pretty Fleet



XS-3X  
Bravo  
Print Top

COORDINATING COLORS



**NEW!**

## 6017 HWH

Home Sweet Home



XS-3X  
Bravo  
Print Top

COORDINATING COLORS



**NEW!**

## 6017 BFZ

Be Flamazing



XS-3X  
Bravo  
Print Top

COORDINATING COLORS



## 6017 DGG

Doggy Day



XS-5X  
Bravo  
Print Top

COORDINATING COLORS





# PRINTS

100% Cotton Poplin

## 6017 PET

Petal Lake



XS-5X  
Bravo  
Print Top

COORDINATING COLORS



## 6017 COT

Colorful Flight



XS-5X  
Bravo  
Print Top

COORDINATING COLORS



# 6017 LFL

Looking For Love



XS-3X  
Bravo  
Print Top

COORDINATING COLORS



# 6027 SWI

Swatcha Doin



XS-3X  
Charlie  
Print Top

COORDINATING COLORS



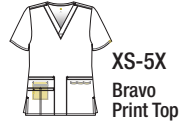


# PRINTS

100% Cotton Poplin

## 6017 WMM

WonderWink on My Mind



COORDINATING COLORS



## 6017 OLY

Olive You



COORDINATING COLORS

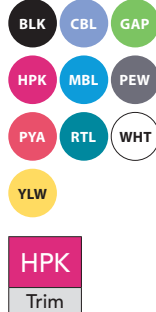


## 6027 GGT

Glow Getter



COORDINATING COLORS







## 6027 RYV

Rosy Vines



XS-3X  
Charlie  
Print Top

COORDINATING COLORS



## 6027 FNB

Fleeting Beauty



XS-3X  
Charlie  
Print Top

COORDINATING COLORS



## 6017 WRT

Wanderlust



XS-3X  
Bravo  
Print Top

COORDINATING COLORS



# WonderWink<sup>TM</sup> next



**CHARLOTTE  
6119**  
Women's  
V-Neck Top



**STRETCH  
COMFORT**

Poly-rayon-spandex blend premium fabric is soft to the touch, yet durable and wrinkle resistant for comfort and easy care.



**EMBROIDERY  
FRIENDLY**

Industry standard colors, embroidery-friendly designs and subtle details ensure consistent appearance for your group.



**GREAT  
VALUE**

Top tier fabric, design and details make WonderWink Next an exceptional value.



**ELIZABETH  
6219**  
Women's  
Mock Wrap Top



**LOGAN  
5119**  
Women's  
Full Elastic  
Drawstring Pant

# Ropa Médica



**BOSTON  
8119**  
Women's  
Warm-up Jacket



**MADISON  
5219**  
Women's  
Flat Front Pant



Ropa Médica

CHARLOTTE

6119

Women's  
 V-Neck Top



Women's Modern Fit and True-Plus Fit  
 65% Polyester/32% Rayon/3% Spandex



Two front lower pockets including one WonderWink signature triple pocket, hidden three part utility loop, and WonderWink logo charm.



Inset shoulder detail with badge loop.



WonderWink embroidered logo at sleeve opening



Vented lower back.

XXS - 5X  
 (Size M length: 26 3/4")

white - WHIT

black - BLAC

pewter - PEWT

navy - NAVY

royal - ROYA

galaxy blue - GALA

teal - TEAL

caribbean - CARI

hunter - HUNT

olive - OLIV

electric lilac - ELEL

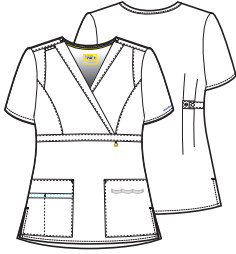
wine - WINE

grape - GRAP

grey - GREY

**ELIZABETH**  
**6219**

Women's  
Mock wrap Top



Women's Modern Fit and True-Plus Fit  
65% Polyester/32% Rayon/3% Spandex

- Two front lower pockets including one WonderWink signature triple pocket and hidden three part utility loop.
- Inset shoulder detail with badge loop.
- Empire waist with WonderWink logo charm and WonderWink embroidered logo at sleeve opening.
- Adjustable back tabs with two snap positions.
- Vented sides.

XS - 3X  
(Size M length: 27 3/4")

**BOSTON**  
**8119**

Women's  
Warm-Up Style Jacket



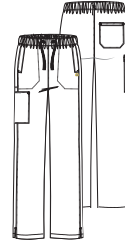
Women's Modern Fit and True-Plus Fit  
65% Polyester/32% Rayon/3% Spandex

- Two front lower seam pockets, one hidden mesh cell phone pocket, and WonderWink logo charm.
- Elastic under cuff and back hem.
- Nylon coil zipper with WonderWink zipper pull.
- WonderWink embroidered logo at mid-arm.

XS - 3X  
(Size M length: 27 1/4")

**LOGAN**  
**5119**

Women's  
Full Elastic Drawstring Pant



Straight Leg

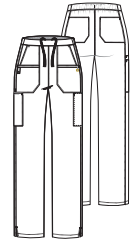
Women's Modern Fit and True-Plus Fit  
65% Polyester/32% Rayon/3% Spandex

- Full elastic waist pant with drawstring.
- Two side seam pockets with WonderWink logo charm, one cargo pocket, one cell phone pocket, and one back pocket.
- WonderWink embroidered logo on cargo pocket.
- Slightly slimmer fit through pant leg.
- Vented bottom.

XXS - 5X  
Petite: XXS - 3X (P)  
Tall: XS - 3X (T)  
(Size M leg opening: 8 3/4")

**MADISON**  
**5219**

Women's  
Flat Front Pant



Straight Leg

Women's Modern Fit and True-Plus Fit  
65% Polyester/32% Rayon/3% Spandex

- Flat front pant with back elastic and interior drawstring.
- Two front double slant pockets with WonderWink logo charm, two cargo pockets, one cell phone pocket, two back pockets.
- WonderWink embroidered logo on cargo pocket
- Slightly slimmer fit through pant leg.
- Vented bottom.

XXS - 5X  
Petite: XXS - 3X (P)  
Tall: XS - 3X (T)  
(Size M leg opening: 8 1/4")



WHIT
BLAC
PEWT
NAVY
ROYA
CEIL
GALA
TEAL
CARI
HUNT
ELEL
WINE

WHIT
BLAC
ROYA
CEIL
GALA
TEAL
CARI
HUNT
ELEL
WINE

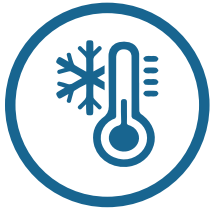
WHIT (P T)
BLAC (P T)
PEWT (P T)
NAVY (P T)
CEIL (P T)
GALA (P T)
TEAL (P T)
CARI (P T)
HUNT (P T)
OLIV (P T)
ELEL (P T)
WINE (P T)
GRAP (P T)
GREY (P T)

WHIT (P T)
BLAC (P T)
PEWT (P T)
NAVY (P T)
ROYA (P T)
CEIL (P T)
GALA (P T)
TEAL (P T)
CARI (P T)
HUNT (P T)
ELEL (P T)
WINE (P T)



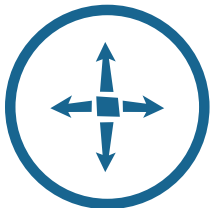
WONDERWINK HP™

## HIGH PERFORMANCE



### COOLING

Keeps you cool when things heat up



### STRETCH

Stretch fabric as flexible as you are



### SOIL RELEASE

Say goodbye to yesterday's mess



### WICKING

Stay dry and cozy all day long



6212 GREY  
5212 GREY

6112 BLAC  
5112 BLAC

- Ultra smooth, **double layer** fabric for maximum moisture wicking capacity.
- Moisture is wicked away from the body to the outermost layer, keeping the body dry and fresh.
- Crafted from **High Performance stretch** yarn, our HP uniforms provide unparalleled knit level comfort with woven durability.
- 90% Polyester / 10% Spandex



**SYNC  
6112**  
Women's  
V-Neck Top



**NEO  
6212**  
Women's  
Boat Neck Top



WONDERWINK HP™

HIGH PERFORMANCE

**AXIS  
6312**  
Women's  
Mock Wrap Top



**SEQUENCE  
6412**  
Women's  
Stylized V-Neck Top



*Ropa Médica*





**LUNA  
7112**  
Women's  
Jacket With Zip  
Pocket



**HYBRID  
5112**  
Women's  
Modern Straight  
Leg Pull On Pant

*Ropa Médica*



**PRISM  
8312**  
Women's  
Snap Front Jacket



**ION  
5212**  
Women's  
Boot Cut Cargo  
Pant

**SYNC**  
**6112**

Women's  
V-Neck Top



Women's Modern Fit and True-Plus Fit  
90% Polyester / 10% Spandex



Two front lower top loading pockets with hidden three part utility loop and one zipper pocket with yellow mesh.



Slimming style lines.



Back seaming for flattering fit.

Vented lower back.

XXS - 3X  
(Size M length: 26 3/4")

**NEO**  
**6212**

Women's  
Boat Neck Top



Women's Modern Fit and True-Plus Fit  
90% Polyester / 10% Spandex



Two front lower top loading pockets with hidden three part utility loop, one zipper pocket with yellow mesh.



Slimming style lines.

Contrast paneling on all colors except BLAC.



Back seaming for flattering fit.

Vented lower back.

XXS - 3X  
(Size M length: 27 3/4")

**AXIS**  
**6312**

Women's  
Mock Wrap Top



Women's Modern Fit and True-Plus Fit  
90% Polyester / 10% Spandex



Two front lower top loading welt pockets and one welt cell phone pocket.



Slimming style lines.



Back seaming for flattering fit.

Vented lower back.

XXS - 3X  
(Size M length: 27 3/4")

**SEQUENCE**  
**6412**

Women's  
Stylized V-Neck Top



Women's Modern Fit and True-Plus Fit  
90% Polyester / 10% Spandex



Two front lower top loading pockets with hidden three part utility loop and one hidden zip pocket at wearers right.



Asymmetrical V-neck banding. Badge loop at wearers right shoulder.



Stylized front seaming.

Vented sides.

XXS - 3X  
(Size M length: 26 3/4")



white - WHIT

black - BLAC

pewter - PEWT

navy - NAVY

royal - ROYA

ceil blue - CEIL

turquoise blue - TURB

caribbean - CARI

green apple - GAPP

fuchsia - FUSA

orchid - ORCH

wine - WINE

grape - GRAP

grey - GREY

WHIT

BLAC

PEWT

NAVY

ROYA

CEIL

TURB

CARI

GAPP

FUSA

ORCH

WINE

GRAP

GREY

WHIT

BLAC

PEWT

NAVY

ROYA

CEIL

TURB

CARI

GAPP

FUSA

ORCH

WINE

GRAP

GREY

BLAC

PEWT

NAVY

ROYA

FUSA

**PRISM**  
**8312**

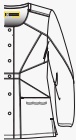
Women's  
Snap Front Jacket



Women's Modern Fit and True-Plus Fit  
90% Polyester / 10% Spandex



Two front lower top loading pockets with hidden three part utility loop and one inner mesh cell phone pocket.



Modern triangular style lines. Dyed-to-match snaps.

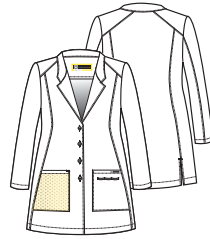
Two piece sleeve with elastic at back sleeve hem.

Vented sides.

XXS - 3X  
(Size M length: 29 3/4")

**LUNA**  
**7112**

Women's  
Jacket With Zip Pocket



Women's Modern Fit and True-Plus Fit  
90% Polyester / 10% Spandex



Two front lower top loading pockets with hidden three part utility loop and one concealed zipper mesh pocket. WonderWink HP branding on left pocket.



Button front closure.

Bartack stitching at stress points.

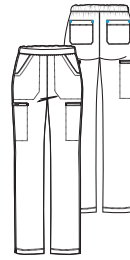


Vented lower back.

XS - 3X  
(Size M length: 32 3/4")

**HYBRID**  
**5112**

Women's  
Modern Straight Leg Pull On Pant



Straight Leg

Women's Modern Fit and True-Plus Fit  
90% Polyester / 10% Spandex



Full elastic waistband with flat front



Two front slash pockets, two welt cargo pockets, and two back pockets.

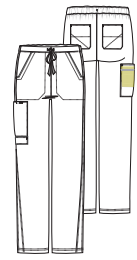


Vented bottom.

XXS - 3X  
Petite: XXS - 3X (Inseam length: 28") **P**  
Tall: XS - 3X **T**  
(Size M leg opening: 8 1/4")

**ION**  
**5212**

Women's  
Boot Cut Cargo Pant



Boot Cut

Women's Modern Fit and True-Plus Fit  
90% Polyester / 10% Spandex



Back elastic full drawstring waistband.



Two front slash pockets, two back pockets, one cargo pocket with hidden yellow mesh cell phone pocket, and one mini pocket below cargo.

XXS - 3X  
Petite: XXS - 3X (Inseam length: 28") **P**  
Tall: XS - 3X **T**  
(Size M leg opening: 9 1/4")



WHIT
BLAC
PEWT
NAVY
ROYA
CEIL
TURB
CARI
GAPP
FUSA
ORCH
WINE
GRAP
GREY

BLAC
------

WHIT	<b>P</b> <b>T</b>
BLAC	<b>P</b> <b>T</b>
PEWT	<b>P</b> <b>T</b>
NAVY	<b>P</b> <b>T</b>
ROYA	<b>P</b> <b>T</b>
CEIL	<b>P</b> <b>T</b>
TURB	<b>P</b> <b>T</b>
CARI	<b>P</b> <b>T</b>
GAPP	<b>P</b> <b>T</b>
FUSA	<b>P</b> <b>T</b>
ORCH	<b>P</b> <b>T</b>
WINE	<b>P</b> <b>T</b>
GRAP	<b>P</b> <b>T</b>
GREY	<b>P</b> <b>T</b>

WHIT	<b>P</b> <b>T</b>
BLAC	<b>P</b> <b>T</b>
PEWT	<b>P</b> <b>T</b>
NAVY	<b>P</b> <b>T</b>
ROYA	<b>P</b> <b>T</b>
CEIL	<b>P</b> <b>T</b>
TURB	<b>P</b> <b>T</b>
CARI	<b>P</b> <b>T</b>
GAPP	<b>P</b> <b>T</b>
FUSA	<b>P</b> <b>T</b>
ORCH	<b>P</b> <b>T</b>
WINE	<b>P</b> <b>T</b>
GRAP	<b>P</b> <b>T</b>
GREY	<b>P</b> <b>T</b>



 **WONDERTECH™**

powered by 

As your core temperature changes, you start to lose cognitive ability. With the WonderTECH powered by 37.5®, your body temperature is regulated, so your cognitive function stays with you.

Work clothes with 37.5® Technology help warm you up when you're cold, help cool you down when you're hot, and remove sweat so you can comfortably work hard all day long.

*Ropa Médica*

**37.5%**

The optimum relative humidity to help keep the microclimate next to your skin comfortable

**WICKING ONLY MOVES  
MOISTURE  
37.5® REMOVES  
MOISTURE**

6113 TEAL  
5113 TEAL



**6113**  
Women's  
Tech V-Neck Top

**5113**  
Women's  
Straight Leg  
Pant



*Ropa Médica*

**5313**  
Women's  
Full Elastic  
Boot Cut  
Pant





**6213**  
Men's  
Athletic Fit Top



**37.5<sup>®</sup> TECHNOLOGY**  
is permanent and never  
washes out or gets tired.

**6113**

Women's  
Tech V-Neck Top



Women's Modern Fit and True-Plus Fit  
37.5<sup>®</sup> Technology infused fabric -  
53% Polyester / 44% Cocona Polyester  
/ 3% Spandex



Two stylized front lower  
pockets.



Shaped forward shoulder  
seam.



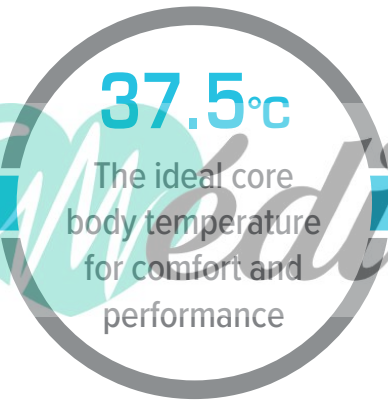
Deco flatlock stitching at  
front.



Shaped side panels with  
vented back.



**5213**  
Men's  
Straight Leg Pant



37.5<sup>®</sup> technology helps warm  
you up when you're cold and  
cool you down when you're hot



37.5<sup>®</sup> technology removes  
sweat in the vapor stage before  
liquid sweat forms



37.5<sup>®</sup> active particles are made  
from nature



37.5<sup>®</sup> technology traps odor  
and releases when washed and  
dried



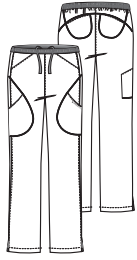
37.5<sup>®</sup> technology works for the  
life of the garment

XS - 3X  
(Size M length: 26 1/4")

- black - **BLAC**
- pewter - **PEWT**
- navy - **NAVY**
- royal - **ROYA**
- ceil blue - **CEIL**
- galaxy blue - **GALA**
- teal - **TEAL**
- olive - **OLIV**
- hot pink - **HTPK**
- grape - **GRAP**

# 5113

Women's  
Straight Leg Pant



Straight Leg

Women's Modern Fit and True-Plus Fit  
37.5® Technology infused fabric -  
53% Polyester / 44% Cocona Polyester  
/ 3% Spandex

Double knit mesh full elastic, flat front drawstring waist.

Two front slant pockets, two stylized cargo pockets, and two stylized back pockets.

Deco flatlock stitching throughout.

Double knit mesh insets at leg vents.

Vented bottom.

Slimmer throughout leg.

XS - 3X  
Petite: XS - 3X **P**  
Tall: XS - 3X **T**  
(Size M leg opening: 7 1/2")

BLAC **P T**

PEWT **P T**

NAVY **P T**

ROYA **P T**

CEIL **P T**

GALA **P T**

TEAL **P T**

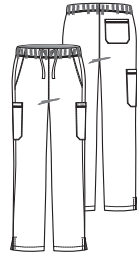
OLIV **P T**

HTPK **P T**

GRAP **P T**

# 5313

Women's  
Full Elastic Boot Cut Pant



Boot Cut

Women's Modern Fit and True-Plus Fit  
37.5® Technology infused fabric -  
53% Polyester / 44% Cocona Polyester  
/ 3% Spandex

Full elastic with drawstring waist.

Two front slant pockets, two cargo pockets, and one back pocket with flatlocked hem.

Vented bottom.

Vented bottom.

Vented bottom.

Vented bottom.

XS - 3X  
Petite: XS - 3X **P**  
Tall: XS - 3X **T**  
(Size M leg opening: 8")

BLAC **P T**

PEWT **P T**

NAVY **P T**

ROYA **P T**

CEIL **P T**

GALA **P T**

TEAL **P T**

OLIV **P T**

HTPK **P T**

GRAP **P T**

# 6213

Men's  
Athletic Fit Top



Men's Modern Fit  
37.5® Technology infused fabric -  
53% Polyester / 44% Cocona Polyester  
/ 3% Spandex

Two front lower pockets and one stylized chest pocket with pen slot.

Deco flatlock stitching throughout garment.

Double knit mesh inset on both sides of torso.

Slightly more tailored throughout the body.

Vented sides.

Dropped back shirt tail.

XS - 3X  
(Size M length: front-29 1/2", back-31")

BLAC

PEWT

NAVY

ROYA

CEIL

GALA

TEAL

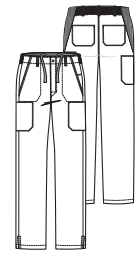
OLIV

HTPK

GRAP

# 5213

Men's  
Straight Leg Pant



Straight Leg

Men's Modern Fit  
37.5® Technology infused fabric -  
53% Polyester / 44% Cocona Polyester  
/ 3% Spandex

Elastic waist with drawstring, button front with functional zipper fly.

Two front slant pockets with cell phone pocket at wearers left, two cargo pockets with cell phone pocket at wearers left, and two back pockets.

Double knit mesh insets at each side of back for ease of movement.

Deco flatlock stitching throughout garment.

Vented bottom.

Slimmer throughout leg.

XS - 3X  
Tall: XS - 3X **T**  
(Size M leg opening: 8 3/4")

BLAC **T**

PEWT **T**

NAVY **T**

ROYA **T**

CEIL **T**

GALA **T**

TEAL **T**

OLIV **T**

HTPK **T**

GRAP **T**

Ropa Médica



**6105**  
Women's  
Curved V-Neck Top



**6205**  
Women's  
Mock Wrap Top

*Ropa Médica*



**BOLD.**

**VIVACIOUS.**

**SMART.**

**5105**  
Women's  
Boot Cut  
Cargo Pant



**6305**  
Women's  
Decorative  
V-Neck Top



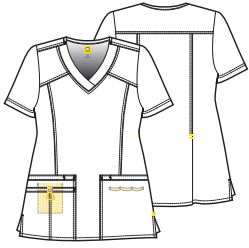
**5205**  
Women's  
Tummy Panel  
Pant



*Ropa Médica*

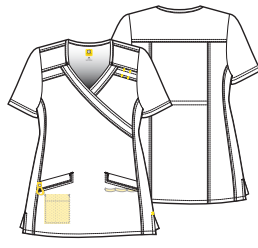
# 6105

Women's  
Curved V-Neck Top



# 6205

Women's  
Mock Wrap Top



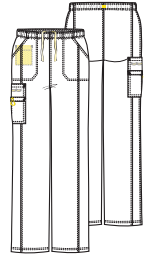
# 6305

Women's  
Decorative V-Neck Top



# 5105

Women's  
Boot Cut Cargo Pant



Boot Cut Leg

Women's True-Plus Fit  
100% Polyester

- Two front lower pockets including WonderWink signature triple pocket with hidden mesh pocket and signature ID bungee loop, and hidden three part utility loop.
- Princess seaming.
- Hidden three part utility loop at front pocket.
- Vertical seaming at back with release pleat detail.
- Vented sides at hem.

1X - 5X  
(Size 2X length: 30")

Women's True-Plus Fit  
100% Polyester

- Two front lower welt pockets with hidden mesh pocket and signature ID bungee loop.
- Princess seaming.
- Hidden three part utility loop at front pocket.
- Inner fit feature at back.
- Vented sides.

1X - 5X  
(Size 2X length: 30")

Women's True-Plus Fit  
100% Polyester

- Two front lower pockets including WonderWink signature triple-pocket with hidden mesh pocket, hidden three part utility loop, signature ID bungee loop, and pen slot.
- Deep V-neck with stitch detailing inset.
- Front and back princess seaming.
- Inner fit feature at back.
- Vented Sides.

1X - 5X  
(Size 2X length: 30")

Women's True-Plus Fit  
100% Polyester

- Full elastic waistband with inside drawstring. Contour waist.
- Two front pockets, one Peek-A-Boo yellow mesh pocket, and one WonderWink signature triple cargo pocket with hidden utility loop.
- Signature ID bungee loop at cargo pocket.
- Elongating seam lines at front and back.

1X - 5X  
Petite 1X - 5X (P)  
(Size 2X leg opening: 11")

white - WHT

black - BLK

pewter - PEW

navy - NVY

royal - RYL

ceil blue - CBL

turquoise - TRQ

deep purple - DPL

wine - WIN

BLK

PEW

NVY

RYL

CBL

TRQ

DPL

WIN

HPK

BLK

PEW

NVY

RYL

TRQ

DPL

WHT (P)

BLK (P)

PEW (P)

NVY (P)

RYL (P)

CBL (P)

TRQ (P)

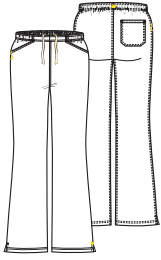
DPL (P)

WIN (P)



# 5205

Women's  
Tummy Panel Pant



Flare Leg

Women's True-Plus Fit  
100% Polyester



Flat front full elastic waistband with inside drawstring. Inner knit mesh tummy control panel. Contour waist.



Two front slash pockets and one back pocket.



Signature ID bungee loop.



Vented bottom.

1X - 5X  
(Size 2X leg opening: 11")



## WONDERWINK ACCESSORIES

*Ropa Médica*



478

WonderWink Luggage Tag



Silicone  
2¾"W x 4½"H

Made from durable silicone material that can get bent, squeezed and knocked around without getting damaged.  
With bright yellow color, you can easily identify your checked luggage.

WNY - One Size, Pack of 2

402

WonderWink Out to Lunch Bag



100% Neoprene  
11"W x 10½"H x 6¼"D

Lightweight and flexible, WonderWink's neoprene lunch bag surely brings more cheer to your lunch!  
Lays flat when empty and its ultra flexible neoprene construction expands to fit.  
Insulated design keeps food and beverages cold. Water-resistant liner resists spills. Machine washable.

WNY - One Size

483

WonderVision Canvas Tote Bag



Exterior: 100% Cotton / Interior: 100% Polyester  
17"W x 14"H x 8"D

Designed with long shoulder straps for comfort and multiple internal pockets to keep you organized when you are on the go. Carry what you need to go from work to after work activities in this adorable WonderWink classic tote.

WON - One Size

484

Zip ID Case with Lanyard



100% Cotton  
3"W x 5"H

Perfect case for your ID, few credit cards and maybe a little cash all together. A hinged ring will hold multiple keys and your badge too.

WON - One Size

486

Canvas WonderWink Make-Up Bag



Exterior: 100% Cotton / Interior PVC vinyl  
9"W x 5"H x 3"D

Show off your passion and love for nursing in this irresistible WonderWink make up bag.  
PVC lining to safely store liquid based items without worrying about leakage.

BLK - One Size

414

WonderWink Tote Bag



Exterior: 100% Faux Leather(PU) / Interior: 100% Polyester  
18½"W x 12½"H x 5½"D, 10" strap drop

Embossed WonderWink face detail at the front  
Classic double-handle style with secure zip top  
Generously sized interior.  
Interior features 5 open pockets, 1 zip security pocket, and key hook.  
Exterior features gunmetal-tone hardware and logo charm.

BLK - One Size

Ropa Médica



# 480

## Print Compression Socks

8-15mm/Hg compression  
 Non-binding top band  
 90% Nylon / 10% Spandex

Colorful knee high 8-15mm/Hg socks offer gradual compression to stimulate blood flow, relieve leg swelling and fatigue.

Keep your hardworking legs comfortable and happy with WonderWink's compression socks! Stylish prints to add fun and fashion to your outfit!

One Size (5-11)

BIP

WON

WWL

SUN

HNS

# 482

## Non-Slip Headband

482A: 65% Polyester / 35% Cotton  
 482B: 97% Cotton / 3% Spandex  
 482C: 65% Polyester / 35% Cotton

Featuring three different styles, you'll never be without the perfect hair accessory to compliment your style. No worries for your super cute headband to slide out of place; they are non-slip! The elastic back adds comfort, ease of wear, and a perfect fit.

One Size



482A  
PEW

482A  
YLW

482A  
BLK

482A  
NRV

482A  
HPK

482B  
ADO

482B  
WON

482B  
BIP

482C  
NDO

482C  
BON



BLK

PEW

# 479

## Compression Socks

15-20mm/Hg compression  
 Non-constricting, comfort top band  
 90% Nylon, 10% Spandex

Comfortable, ultra-soft, the WonderWink's 15-20mm/Hg compression socks help alleviate foot aches and pains from standing for long periods of time on your feet. Gradual compression promotes better circulation and faster muscle recovery. Wear them daily and enjoy the comfort of non-binding top band. Sleek design to compliment your outfit while supporting you to perform at your best!

One Size Fits Most

# 485

## Arch Support, No Show Socks

100% Polyester

Colorful, half cushion WonderWink socks to brighten your day and keep your feet comfortable all day long. Half-cushion foot for extra protection Arch compression for support. Reinforced heel and toe for durability in high-wear areas.

One Size (5-11)

HMB - Pack of 3 pairs in 3 colors





# WonderWink Lab Coats



**700**  
Women's  
Basic Lab Coat



**703**  
Men's  
Basic Lab Coat



*Ropa Médica*

WONDERLAB

7102

Men's  
Consultation Coat



WONDERLAB

7202

Women's  
Consultation Coat



# Ropa Médica

WONDERLAB

7302

Men's  
Long Lab Coat



WONDERLAB

7402

Women's  
Long Lab Coat



Find premium fabrics that are soft to the touch and durable for the long shift ahead.



**Four-Stretch<sup>4</sup>**

**7004**  
Women's  
4-Stretch  
Lab Coat



**7008**  
Women's  
Fashion Lab Coat

*Ropa Médica*



Discover lab coats that are both group friendly and the best value in the industry.



**7106**  
Unisex  
Origins  
Lab Coat



**7112**  
Women's  
Jacket With Zip  
Pocket



*Ropa Médica*



# WonderWink Lab Coats



Ropa Médica

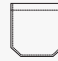
## 7102

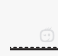
Men's  
Consultation Coat




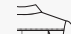
Size M length: 31 1/2"

Men's Classic Fit  
65% Polyester / 35% Cotton Poplin

 Two front lower pockets, one chest pocket with pen slot, and inner tablet pocket.

 White logo embroidery at front lower left pocket.

 Locker loop.

 Back pleats.

 Vented back.

XS - 5X

white - WHT

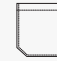
## 7202


Women's  
Consultation Coat




Size M length: 29 1/2"

Women's Classic Fit  
65% Polyester / 35% Cotton Poplin

 Two front lower pockets, one chest pocket with pen slot, and inner tablet pocket.

 White logo embroidery at front lower left pocket.

 Locker loop.

 Vented back.

XXS - 5X

white - WHT

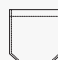
## 7302


Men's  
Long Lab Coat




Size M length: 42"

Men's Classic Fit  
65% Polyester / 35% Cotton Poplin


 Two front lower pockets, one chest pocket with pen slot, and inner tablet pocket.

 White logo embroidery at front lower left pocket.

 Locker loop.

 Back pleats.

 Side Access.

 Vented sides and back.

XS - 5X

white - WHT


## 7402

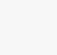
Women's  
Long Lab Coat




Size M length: 38"


Women's Classic Fit  
65% Polyester / 35% Cotton Poplin

 Two front lower pockets, one chest pocket with pen slot, and inner tablet pocket.

 White logo embroidery at front lower left pocket.

 Locker loop.

 Side Access.

 Vented sides and back.

XXS - 5X

white - WHT

# 7004

## Women's 4-Stretch Lab Coat



Size M length: 32"

Women's Modern Fit and True-Plus Fit  
100% Polyester



Two front lower pockets including WonderWink signature pocket with signature ID bungee loop and mesh coin pocket.



Princess seaming and a mock belt at the waist.

An adjustable back button closure.



Vented back.

XS - 2X

white - WHT

royal - RYL

graphite - GPH

navy - NVY

black - BLK

# 7008

## Women's Fashion Lab Coat



Size M length: 35 1/2"

Women's Modern Fit and True-Plus Fit  
52% Cotton / 45% Polyester / 3% Spandex



Two front lower pockets including one WonderWink signature triple pocket and one chest pocket.



Hidden shoulder loop.



WonderFLEX badge at wearer's left waist belt.



Wrap-around adjustable belt.

Vented back.

XS - 3X

white - WHT

# 7106

## Unisex Origins Lab Coat



Size M length: 33 1/2"  
Long: 35 1/2"

Unisex Fit  
65% Polyester / 35% cotton



Two front lower pockets including one WonderWink signature triple pocket with hidden mesh pocket and signature ID bungee loop, one scissors pocket at wearer's left side, and one chest pocket with pen slot.



Vented back.

XXS - 5X, Long: XS - 5X

white - WHT

# 7112

## Women's Jacket With Zip Pocket



Size M length: 32 3/4"

Women's Modern Fit and True-Plus Fit  
90% Polyester / 10% Spandex



Two front lower top loading pockets with hidden three part utility loop and one concealed zipper mesh pocket. WonderWink HP branding on left pocket.



Bartack stitching at stress points.



Vented lower back.

XS - 3X

black - BLK

# 700

## Women's Basic Lab Coat



Size M length: 33 1/2"

Women's Classic Fit and True-Plus Fit  
65% Polyester / 35% Cotton



Two front lower pockets with utility loop, one pen slot, one cell phone pocket, one chest pocket with pen slot, and one inside tablet pocket.



Inset waistband.

Vented Back.

XXS-5X

white - WHT

# 703

## Men's Basic Lab Coat



Size M length: 35 1/2"

Men's Classic Fit  
65% Polyester / 35% Cotton



Two front lower pockets with utility loop, one pen slot, one cell phone pocket, one chest pocket with pen slot, and one inside tablet pocket.



Back yoke with pleats.

Inset waistband.

Vented back.

XS-5X

white - WHT

# Fashion Seal Healthcare®

Fashion Seal Healthcare®, a division of Superior Group of Companies®, is a leading provider of fine healthcare apparel. We embrace a "Customer 1st, Every Time!" philosophy and are committed to quality, service, technology, and value.

**F3495**  
Unisex 41"  
Lab Coat



**F3495**  
Unisex 41"  
Lab Coat



*Ropa Médica*

# TECHNOLOGY & CONSULTATION



**F128**  
Women's 28"  
Consultation  
Lab Jacket



**F1475**  
Unisex 41"  
Consultation  
Technology Coat



**F419**  
Unisex 30"  
Consultation  
Lab Jacket

*Ropa Médica*



**F499**  
Men's 39"  
Staff Length  
Lab Coat



**F477**  
Women's 39"  
Traditional Length  
Lab Coat

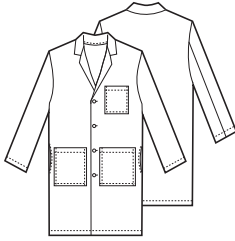


**F423**  
Men's 41"  
Knot Button  
Knee Length  
Lab Coat

*Ropa Médica*

# F3495

Unisex 41"  
Lab Coat



Unisex Fit  
65% Polyester / 35% Cotton Poplin

Button front.



Left chest pocket and two lower oversized outside pockets.



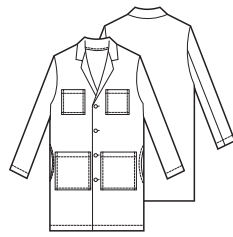
Side slits for pocket access.

2XS - 3XL

white - WHIT

# F1475

Unisex 41"  
Consultation Technology Coat



Unisex Fit  
65% Polyester / 35% Cotton Fine Line Twill

Button front.



Two chest pockets; within left pocket is a separate double pencil pocket, two lower oversized double outside pockets; outer pockets large enough to accommodate a Tablet, and two oversized lower inside pockets.



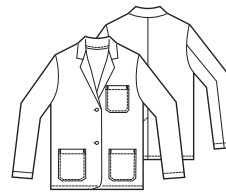
Side slits for pocket access.

XS - 3XL

white - WHIT

# F128

Women's 28"  
Consultation Lab Jacket



Women's Fit  
65% Polyester / 35% Cotton Fine Line Twill

Button front.



Left chest pocket, two lower outside pockets, and two lower inside pockets.



Fuller sleeves.

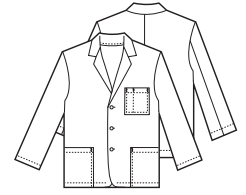
Center back vent

2XS - 3XL

white - WHIT

# F419

Unisex 30"  
Consultation Coat



Unisex Fit  
65% Polyester / 35% Cotton Fine Line Twill

Button front



Oversized left chest pocket with pencil division, four lower outside pockets; two outer oversized, large enough to accommodate a Tablet, two oversized lower inside pockets, large enough to accommodate a Tablet

2XS - 3XL

white - WHIT

# F499

Men's 39"  
Staff Length Lab Coat



Unisex Fit  
65% Polyester / 35% Cotton Fine Line Twill

Button front.



Left chest pocket, and two lower outside pockets



Side slits for pocket access

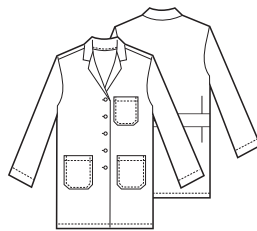
Stitched down back belt

32 - 50

white - WHIT

# F477

Women's 39"  
Traditional Length Lab Coat



Women's Fit  
65% Polyester / 35% Cotton Poplin

Button front.



Left chest pocket and two lower outside pockets

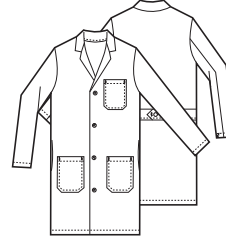
Two piece attached back belt with button closure

6 - 20, 42 - 50

white - WHIT

# F423

Men's 41"  
Knot Button Knee Length Lab Coat



Men's Fit  
100% Sanforized Cotton Heavyweight Twill

Knot buttons



Left chest pocket and two lower outside pockets



Side slits for pocket access

Two piece attached back belt

32 - 56

white - WHIT

Ropa Médica

## THINGS TO CONSIDER:

1. Choose a length, fabric and gender.
2. Consider complimentary styles for the entire staff.
3. Choose the type of closure you prefer.
4. Choose the number and size.

Length		41"			39"		30"	28"
Style #		F1475	F3495	F423	F499	F477	F419	F128
Description		Unisex Consultation Technology Lab Coat	Unisex Lab Coat	Men's Knot Button Knee Length Lab Coat	Men's Staff Length Lab Coat	Women's Traditional Length Lab Coat	Unisex Consultation Jacket	Women's Consultation Lab Jacket
100% Sanforized Cotton Heavyweight Twill	M			•				
65/35 Finesline Twill	Unisex	•					•	
	M				•			
	W							•
65/35 Poplin	Unisex		•					
	W					•		
Closure	Button	•	•	•	•	•	•	•
	Knot			•				
Pockets	Chest	2	1	1	1	1	1	1
	Lower	4	2	2	2	2	4	2
	Inside	2	0	0	0	0	2	2
Features	Back			2 Piece Attached	Stitched Down	2 Piece Attached		Center Vent
	Side Slits	•	•	•	•			
	Special	Oversized Double Pockets	Oversized Pockets				Oversized Pockets - Pencil Stitch	Fuller Sleeves

## SIZE AND CONVERSION CHARTS

The following charts may be used as a guide for determining the correct size to order for styles shown throughout this catalog. Locate the correct size chart and order the size listed, based on your equivalent numeric size. Men's numeric sizes are chest measurements; Women's are dress sizes.

### UNISEX AND MEN'S

Order Size	XXS	XS	S	M	L	XL	2X	3X	4X	5X
Women's Jacket	2-4	6-8	10-12	14-16	18-20	22-24	26-28	30-32	34-36	38-40
Men's Jacket	26-28	30-32	34-36	38-40	42-44	46-48	50-52	54-56	58-60	62-64

### WOMEN'S

Order Size	XXS	XS		S		M		L		XL		2X		3X		4X	
Jacket or Dress	0	2	4	6	8	10	12	14	16	18	20	22/42	24/44	26/46	28/48	30/50	32/52
Bust	30-31	31-32	32-33	33-34	34-35	35-36	36-37	38-39	39-40	40-42	42-44	44-46	46-48	48-50	50-52	52-54	54-56
Waist	21-22	22-23	23-24	24-25	25-26	26-27	27-28	29-30	30-31	32-33	34-35	36-37	38-39	40-41	42-43	44-45	46-47
Hip	32-33	33-34	34-35	35-36	36-37	37-38	38-39	41-42	42-44	42-44	44-46	46-48	48-50	50-52	52-54	54-56	56-58

All illustrations and specifications contained herein are for illustrative purposes only and are based on the latest product information available at the time of printing. We reserve the right to make changes in color, prints, materials, blends of fabrics and specifications at any time. Styles may be discontinued without notice. Your local Sales Representative is always available to you for updates on all product offerings.



# WONDERWINK COLLEGIATE SCRUBS

OFFICIALLY LICENSED PRODUCTS  
OFFERED IN OFFICIAL SCHOOL  
COLORS

Custom Embroidery available.

Please contact your sales representative for more information.



## MADE FOR THE COLLEGE FAN!

WonderWink Collegiate Scrubs are worn by medical professionals and other fans that want to wear comfortable and colorful scrubs while showing support for their school. We have created a line that is fun, bold and geared for the 195+ million team spirited fans.

The line features meticulous embroidery of your favorite team's logo that'll make your passionate fandom apparent. You'll be ready to cheer your team on to victory at the office or lounging around the house during the next big game with these spirited scrubs!

*Ropa Médica*

- Meticulous Embroidery
- Quick Turnaround
- Outfitting All Fans Today
- Amazing Scrub Styles
- Officially Licensed
- Official School Colors

## ORDER INFORMATION

No Discounts applicable. 12 unit opening minimum order. 6 unit re-order minimum for non-stock items. No unit re-order minimum for stock items. Not all schools, colors, sizes, and styles are in the stock program. Additional items not listed here can be ordered with collegiate embroidery, but lead times, pricing and minimums will vary. Please contact us if you are interested in a school that is not listed. Returns are available for reorderable items only, made within 30 days of receipt. A 20% restocking fee applies on reorderable returns. Returns are not available for special order items. No exceptions.



# WONDERWINK

## COLLEGIATE SCRUBS

**100**  
Unisex  
V-Neck Top



**101**  
Women's  
V-Neck Top



**800**  
Unisex  
Snap Front  
Jacket



*Ropa Médica*



WonderWink

**Wonder  
WORK**



**500**  
Unisex  
Drawstring  
Cargo Pant



**504**  
Women's  
Straight Leg  
Cargo Pant

**7106**  
Unisex  
Origins  
Lab Coat



**400**  
Unisex  
Solid  
Scrub Cap

*Ropa Médica*

# WONDERWINK COLLEGIATE SCRUBS

# REORDERABLE LICENSED SCHOOLS

## IN-STOCK SCHOOLS

- 48 hour shipping
- Available to order in Uniform Solutions and B2B
- Schools subject to change
- Available in sizes XS - 3X

### REORDERABLE GUIDE

IN-STOCK

Logo Code

Logo Available

School

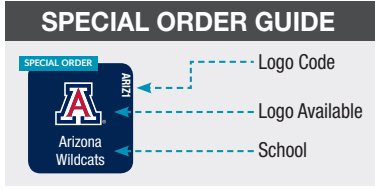
The following selection is in-stock and reorderable. Returns are available for reorderable items only. Returns must be made within 30 days of receipt. No exceptions. A 20% restocking fee applies on all returns.

<p>IN-STOCK</p> <p>Alabama Crimson Tide</p> <p>AVAILABLE COLOR CARDINAL &amp; PEWTER</p> <p>AVAILABLE STYLES 100, 101, 800, 500, 504, 400</p>	<p>IN-STOCK</p> <p>Arizona Wildcats</p> <p>AVAILABLE COLOR BLACK &amp; NAVY</p> <p>AVAILABLE STYLES 100, 101, 800, 500, 504, 400</p>	<p>IN-STOCK</p> <p>Arizona State Sun Devils</p> <p>AVAILABLE COLOR MAROON</p> <p>AVAILABLE STYLES 100, 101, 500, 502, 504, 400</p>	<p>IN-STOCK</p> <p>Arkansas Razorbacks</p> <p>AVAILABLE COLORS BLACK</p> <p>AVAILABLE STYLES 100, 101, 800, 500, 504, 400</p>	<p>IN-STOCK</p> <p>Arkansas Razorbacks</p> <p>AVAILABLE COLOR CARDINAL</p> <p>AVAILABLE STYLES 100, 101, 800, 500, 504, 400</p>	<p>IN-STOCK</p> <p>Arkansas Razorbacks</p> <p>AVAILABLE COLOR PEWTER</p> <p>AVAILABLE STYLES 100, 101, 800, 500, 504, 400</p>	<p>IN-STOCK</p> <p>Auburn Tigers</p> <p>AVAILABLE COLOR NAVY</p> <p>AVAILABLE STYLES 100, 101, 800, 500, 504, 400</p>
<p>IN-STOCK</p> <p>Auburn Tigers</p> <p>AVAILABLE COLORS ORANGE</p> <p>AVAILABLE STYLES 100, 101, 800, 500, 504, 400</p>	<p>IN-STOCK</p> <p>Clemson Tigers</p> <p>AVAILABLE COLOR GRAPE</p> <p>AVAILABLE STYLES 100, 101, 800, 500, 502, 504, 400</p>	<p>IN-STOCK</p> <p>Clemson Tigers</p> <p>AVAILABLE COLOR ORANGE</p> <p>AVAILABLE STYLES 100, 101, 800, 500, 504, 400</p>	<p>IN-STOCK</p> <p>Creighton Blue Jays</p> <p>AVAILABLE COLOR ROYAL</p> <p>AVAILABLE STYLES 100, 101, 800, 500, 504, 400</p>	<p>IN-STOCK</p> <p>Florida Gators</p> <p>AVAILABLE COLOR ROYAL</p> <p>AVAILABLE STYLES 100, 101, 800, 500, 504, 400</p>	<p>IN-STOCK</p> <p>Florida State Seminoles</p> <p>AVAILABLE COLOR GARNET</p> <p>AVAILABLE STYLES 100, 101, 800, 500, 502, 504, 400</p>	<p>IN-STOCK</p> <p>Florida State Seminoles</p> <p>AVAILABLE COLOR GARNET</p> <p>AVAILABLE STYLES 100, 101, 800, 500, 502, 504, 400</p>
<p>IN-STOCK</p> <p>Georgia Bulldogs</p> <p>AVAILABLE COLORS BLACK</p> <p>AVAILABLE STYLES 100, 101, 800, 500, 504, 400</p>	<p>IN-STOCK</p> <p>Georgia Bulldogs</p> <p>AVAILABLE COLORS RED</p> <p>AVAILABLE STYLES 100, 101, 800, 500, 504, 400</p>	<p>IN-STOCK</p> <p>Gonzaga Bulldogs</p> <p>AVAILABLE COLOR NAVY</p> <p>AVAILABLE STYLES 100, 101, 800, 500, 504, 400</p>	<p>IN-STOCK</p> <p>Illinois Fighting Illini</p> <p>AVAILABLE COLOR NAVY</p> <p>AVAILABLE STYLES 100, 101, 800, 500, 504, 400</p>	<p>IN-STOCK</p> <p>Indiana Hoosiers</p> <p>AVAILABLE COLOR CARDINAL</p> <p>AVAILABLE STYLES 100, 101, 800, 500, 504, 400</p>	<p>IN-STOCK</p> <p>Iowa Hawkeyes</p> <p>AVAILABLE COLOR BLACK</p> <p>AVAILABLE STYLES 100, 101, 800, 500, 502, 504, 400</p>	<p>IN-STOCK</p> <p>Iowa Hawkeyes</p> <p>AVAILABLE COLOR GOLD</p> <p>AVAILABLE STYLES 100, 101, 800, 500, 504, 400</p>
<p>IN-STOCK</p> <p>Iowa State Cyclones</p> <p>AVAILABLE COLOR BURGUNDY &amp; PEWTER</p> <p>AVAILABLE STYLES 100, 101, 800, 500, 504, 400</p>	<p>IN-STOCK</p> <p>Kansas Jayhawks</p> <p>AVAILABLE COLOR ROYAL</p> <p>AVAILABLE STYLES 100, 101, 800, 500, 502, 504, 400</p>	<p>IN-STOCK</p> <p>Kansas State Wildcats</p> <p>AVAILABLE COLOR GRAPE</p> <p>AVAILABLE STYLES 100, 101, 800, 500, 504, 400</p>	<p>IN-STOCK</p> <p>Kansas State Wildcats</p> <p>AVAILABLE COLOR PEWTER</p> <p>AVAILABLE STYLES 100, 101, 800, 500, 504, 400</p>	<p>IN-STOCK</p> <p>Kentucky Wildcats</p> <p>AVAILABLE COLOR GALAXY, PEWTER, ROYAL</p> <p>AVAILABLE STYLES 100, 101, 800, 500, 502, 504, 400</p>	<p>IN-STOCK</p> <p>Louisville Cardinals</p> <p>AVAILABLE COLOR RED</p> <p>AVAILABLE STYLES 100, 101, 800, 500, 502, 504, 400</p>	<p>IN-STOCK</p> <p>LSU Tigers</p> <p>AVAILABLE COLOR GRAPE</p> <p>AVAILABLE STYLES 100, 101, 800, 500, 502, 504, 400</p>
<p>IN-STOCK</p> <p>Maryland Terrapins</p> <p>AVAILABLE COLORS RED</p> <p>AVAILABLE STYLES 100, 101, 800, 500, 504, 400</p>	<p>IN-STOCK</p> <p>Miami Hurricanes</p> <p>AVAILABLE COLOR PINE</p> <p>AVAILABLE STYLES 100, 101, 800, 500, 504, 400</p>	<p>IN-STOCK</p> <p>Michigan Wolverines</p> <p>AVAILABLE COLOR NAVY</p> <p>AVAILABLE STYLES 100, 101, 800, 500, 504, 400</p>	<p>IN-STOCK</p> <p>Michigan State Spartans</p> <p>AVAILABLE COLOR PEWTER &amp; PINE</p> <p>AVAILABLE STYLES 100, 101, 800, 500, 504, 400</p>	<p>IN-STOCK</p> <p>Ole Miss Mississippi Rebels</p> <p>AVAILABLE COLOR NAVY</p> <p>AVAILABLE STYLES 100, 101, 800, 500, 502, 504, 400</p>	<p>IN-STOCK</p> <p>Mississippi State Bulldogs</p> <p>AVAILABLE COLOR MAROON</p> <p>AVAILABLE STYLES 100, 101, 500, 502, 504, 400</p>	<p>IN-STOCK</p> <p>Missouri Tigers</p> <p>AVAILABLE COLOR BLACK</p> <p>AVAILABLE STYLES 100, 101, 800, 500, 504, 400</p>

<p>IN-STOCK</p>  <p>NC State Wolfpack</p> <p>AVAILABLE COLORS <b>RED</b></p> <p>AVAILABLE STYLES 100, 101, 800, 500, 504, 400</p>	<p>IN-STOCK</p>  <p>Nebraska Cornhuskers</p> <p>AVAILABLE COLOR <b>BLACK</b></p> <p>AVAILABLE STYLES 100, 101, 800, 500, 504, 400</p>	<p>IN-STOCK</p>  <p>Nebraska Cornhuskers</p> <p>AVAILABLE COLOR <b>RED</b></p> <p>AVAILABLE STYLES 100, 101, 800, 500, 504, 400</p>	<p>IN-STOCK</p>  <p>North Carolina Tar Heels</p> <p>AVAILABLE COLOR <b>CEIL BLUE</b></p> <p>AVAILABLE STYLES 100, 101, 800, 500, 504, 400</p>	<p>IN-STOCK</p>  <p>Ohio State Buckeyes</p> <p>AVAILABLE COLOR <b>BLACK &amp; PEWTER</b></p> <p>AVAILABLE STYLES 100, 101, 800, 500, 502, 504, 400</p>	<p>IN-STOCK</p>  <p>Ohio State Buckeyes</p> <p>AVAILABLE COLOR <b>RED</b></p> <p>AVAILABLE STYLES 100, 101, 800, 500, 502, 504, 400</p>	<p>IN-STOCK</p>  <p>Oklahoma Sooners</p> <p>AVAILABLE COLOR <b>BURGUNDY</b></p> <p>AVAILABLE STYLES 100, 101, 800, 500, 504, 400</p>
<p>IN-STOCK</p>  <p>Oklahoma State Cowboys</p> <p>AVAILABLE COLOR <b>BLACK &amp; ORANGE</b></p> <p>AVAILABLE STYLES 100, 101, 800, 500, 504, 400</p>	<p>IN-STOCK</p>  <p>Oklahoma State Cowboys</p> <p>AVAILABLE COLOR <b>ORANGE</b></p> <p>AVAILABLE STYLES 100, 101, 800, 500, 504, 400</p>	<p>IN-STOCK</p>  <p>Pittsburgh Panthers</p> <p>AVAILABLE COLOR <b>ROYAL</b></p> <p>AVAILABLE STYLES 100, 101, 800, 500, 504, 400</p>	<p>IN-STOCK</p>  <p>Penn State Nittany Lions</p> <p>AVAILABLE COLOR <b>NAVY</b></p> <p>AVAILABLE STYLES 100, 101, 800, 500, 502, 504, 400</p>	<p>IN-STOCK</p>  <p>Purdue Boilermakers</p> <p>AVAILABLE COLOR <b>BLACK</b></p> <p>AVAILABLE STYLES 100, 101, 800, 500, 504, 400</p>	<p>IN-STOCK</p>  <p>South Carolina Gamecocks</p> <p>AVAILABLE COLOR <b>BLACK &amp; BURGUNDY</b></p> <p>AVAILABLE STYLES 100, 101, 800, 500, 502(BLAC), 504, 400</p>	<p>IN-STOCK</p>  <p>Southern Miss Golden Eagles</p> <p>AVAILABLE COLOR <b>BLACK</b></p> <p>AVAILABLE STYLES 100, 101, 800, 500, 504, 400</p>
<p>IN-STOCK</p>  <p>Syracuse Orange</p> <p>AVAILABLE COLOR <b>NAVY</b></p> <p>AVAILABLE STYLES 100, 101, 800, 500, 504, 400</p>	<p>IN-STOCK</p>  <p>Syracuse Orange</p> <p>AVAILABLE COLOR <b>ORANGE</b></p> <p>AVAILABLE STYLES 100, 101, 800, 500, 504, 400</p>	<p>IN-STOCK</p>  <p>Tennessee Volunteers</p> <p>AVAILABLE COLOR <b>LIGHT ORANGE</b></p> <p>AVAILABLE STYLES 100, 101, 800, 500, 504, 400</p>	<p>IN-STOCK</p>  <p>Tennessee Volunteers</p> <p>AVAILABLE COLOR <b>PEWTER</b></p> <p>AVAILABLE STYLES 100, 101, 800, 500, 502, 504, 400</p>	<p>IN-STOCK</p>  <p>Texas A&amp;M Aggies</p> <p>AVAILABLE COLOR <b>MAROON</b></p> <p>AVAILABLE STYLES 100, 101, 500, 502, 504, 400</p>	<p>IN-STOCK</p>  <p>Texas Tech Red Raiders</p> <p>AVAILABLE COLORS <b>BLACK &amp; RED</b></p> <p>AVAILABLE STYLES 100, 101, 800, 500, 504, 400</p>	<p>IN-STOCK</p>  <p>Utah Utes</p> <p>AVAILABLE COLOR <b>RED</b></p> <p>AVAILABLE STYLES 100, 101, 800, 500, 504, 400</p>
<p>IN-STOCK</p>  <p>Virginia Tech Hokies</p> <p>AVAILABLE COLOR <b>MAROON</b></p> <p>AVAILABLE STYLES 100, 101, 500, 504, 400</p>	<p>IN-STOCK</p>  <p>Washington Huskies</p> <p>AVAILABLE COLOR <b>GRAPE</b></p> <p>AVAILABLE STYLES 100, 101, 800, 500, 504, 400</p>	<p>IN-STOCK</p>  <p>Washington State Cougars</p> <p>AVAILABLE COLOR <b>CARDINAL</b></p> <p>AVAILABLE STYLES 100, 101, 800, 500, 504, 400</p>	<p>IN-STOCK</p>  <p>West Virginia Mountaineers</p> <p>AVAILABLE COLOR <b>NAVY</b></p> <p>AVAILABLE STYLES 100, 101, 800, 500, 504, 400</p>	<p>IN-STOCK</p>  <p>Wichita State Shockers</p> <p>AVAILABLE COLOR <b>BLACK</b></p> <p>AVAILABLE STYLES 100, 101, 800, 500, 502, 504, 400</p>	<p>IN-STOCK</p>  <p>Wisconsin Badgers</p> <p>AVAILABLE COLOR <b>RED</b></p> <p>AVAILABLE STYLES 100, 101, 800, 500, 502, 504, 400</p>	<p>IN-STOCK</p>  <p>Wyoming Cowboys</p> <p>AVAILABLE COLORS <b>BLACK &amp; CHOCOLATE</b></p> <p>AVAILABLE STYLES 100, 101, 800, 500, 504, 400</p>

# WONDERWINK COLLEGIATE SCRUBS

# SPECIAL ORDER LICENSED SCHOOLS



The following selection is only available as special order. Lead times, pricing and minimums will vary. Please contact us if you are interested in a school that is not listed. Returns are not available for special order items.

<p><b>SPECIAL ORDER</b></p>  <p><b>UAF1</b></p> <p>Alaska Nanooks</p> <p>AVAILABLE COLOR <b>BLACK</b></p> <p>AVAILABLE STYLES 100, 102, 503, 504</p>	<p><b>SPECIAL ORDER</b></p>  <p><b>UAF1</b></p> <p>Alaska Nanooks</p> <p>AVAILABLE COLOR <b>ROYAL</b></p> <p>AVAILABLE STYLES 100, 102, 503, 504</p>	<p><b>SPECIAL ORDER</b></p>  <p><b>ARR1</b></p> <p>Arkansas Razorbacks</p> <p>AVAILABLE COLORS <b>NAVY</b></p> <p>AVAILABLE STYLES 100, 101, 800, 500, 504, 400</p>	<p><b>SPECIAL ORDER</b></p>  <p><b>ASRW1</b></p> <p>Arkansas State Red Wolves</p> <p>AVAILABLE COLORS <b>BLACK, PEWTER, RED</b></p> <p>AVAILABLE STYLES 100, 101, 800, 500, 504, 400</p>	<p><b>SPECIAL ORDER</b></p>  <p><b>BAV1</b></p> <p>Baylor Bears</p> <p>AVAILABLE COLOR <b>PINE</b></p> <p>AVAILABLE STYLES 100, 101, 800, 500, 504, 400</p>	<p><b>SPECIAL ORDER</b></p>  <p><b>BOIS1</b></p> <p>Boise State Broncos</p> <p>AVAILABLE COLOR <b>ROYAL</b></p> <p>AVAILABLE STYLES 100, 101, 800, 500, 504, 400</p>	<p><b>SPECIAL ORDER</b></p>  <p><b>BUTB1</b></p> <p>Butler Bulldogs</p> <p>AVAILABLE COLOR <b>NAVY</b></p> <p>AVAILABLE STYLES 100, 101, 800, 500, 504, 400</p>
<p><b>SPECIAL ORDER</b></p>  <p><b>BYU1</b></p> <p>BYU Cougars</p> <p>AVAILABLE COLOR <b>NAVY</b></p> <p>AVAILABLE STYLES 100, 101, 800, 500, 504, 400</p>	<p><b>SPECIAL ORDER</b></p>  <p><b>UCF1</b></p> <p>Central Florida Knights</p> <p>AVAILABLE COLOR <b>BLACK</b></p> <p>AVAILABLE STYLES 100, 101, 800, 500, 504, 400</p>	<p><b>SPECIAL ORDER</b></p>  <p><b>CMU1</b></p> <p>Central Michigan Chippewas</p> <p>AVAILABLE COLOR <b>MAROON</b></p> <p>AVAILABLE STYLES 100, 101, 500, 504, 400</p>	<p><b>SPECIAL ORDER</b></p>  <p><b>UC1</b></p> <p>Cincinnati Bearcats</p> <p>AVAILABLE COLOR <b>BLACK</b></p> <p>AVAILABLE STYLES 100, 101, 800, 500, 504, 400</p>	<p><b>SPECIAL ORDER</b></p>  <p><b>UC1</b></p> <p>Cincinnati Bearcats</p> <p>AVAILABLE COLOR <b>RED</b></p> <p>AVAILABLE STYLES 100, 101, 800, 500, 504, 400</p>	<p><b>SPECIAL ORDER</b></p>  <p><b>COLB1</b></p> <p>Colorado Buffaloes</p> <p>AVAILABLE COLOR <b>BLACK</b></p> <p>AVAILABLE STYLES 100, 101, 800, 500, 504, 400</p>	<p><b>SPECIAL ORDER</b></p>  <p><b>DE1</b></p> <p>Delaware Fighting Blue Hens</p> <p>AVAILABLE COLOR <b>ROYAL</b></p> <p>AVAILABLE STYLES 100, 101, 800, 500, 504, 400</p>
<p><b>SPECIAL ORDER</b></p>  <p><b>DRBK1</b></p> <p>Drake Bulldogs</p> <p>AVAILABLE COLOR <b>ROYAL</b></p> <p>AVAILABLE STYLES 100, 101, 800, 500, 504, 400</p>	<p><b>SPECIAL ORDER</b></p>  <p><b>ECU1</b></p> <p>East Carolina Pirates</p> <p>AVAILABLE COLOR <b>GRAPE</b></p> <p>AVAILABLE STYLES 100, 101, 800, 500, 504, 400</p>	<p><b>SPECIAL ORDER</b></p>  <p><b>ETSU1</b></p> <p>Eastern Tennessee Buccaneers</p> <p>AVAILABLE COLOR <b>NAVY</b></p> <p>AVAILABLE STYLES 100, 101, 800, 500, 504, 400</p>	<p><b>SPECIAL ORDER</b></p>  <p><b>EWU1</b></p> <p>Eastern Washington Eagles</p> <p>AVAILABLE COLOR <b>RED</b></p> <p>AVAILABLE STYLES 100, 101, 800, 500, 504, 400</p>	<p><b>SPECIAL ORDER</b></p>  <p><b>FLG1</b></p> <p>Florida Gators</p> <p>AVAILABLE COLOR <b>BLACK &amp; ORANGE</b></p> <p>AVAILABLE STYLES 100, 101, 800, 500, 504, 400</p>	<p><b>SPECIAL ORDER</b></p>  <p><b>UFLG2</b></p> <p>Florida Gators</p> <p>AVAILABLE COLOR <b>ROYAL</b></p> <p>AVAILABLE STYLES 100, 101, 800, 500, 504, 400</p>	<p><b>SPECIAL ORDER</b></p>  <p><b>UFLG3</b></p> <p>Florida Gators</p> <p>AVAILABLE COLORS <b>BLACK &amp; ROYAL</b></p> <p>AVAILABLE STYLES 100, 101, 800, 500, 504, 400</p>
<p><b>SPECIAL ORDER</b></p>  <p><b>FAMU1</b></p> <p>Florida A&amp;M Rattlers</p> <p>AVAILABLE COLOR <b>BLACK &amp; PINE</b></p> <p>AVAILABLE STYLES 100, 101, 800, 500, 504, 400</p>	<p><b>SPECIAL ORDER</b></p>  <p><b>FAO1</b></p> <p>Florida Atlantic Owls</p> <p>AVAILABLE COLOR <b>NAVY</b></p> <p>AVAILABLE STYLES 100, 101, 800, 500, 504, 400</p>	<p><b>SPECIAL ORDER</b></p>  <p><b>FGCU1</b></p> <p>Florida Gulf Coast Eagles</p> <p>AVAILABLE COLOR <b>GALAXY BLUE</b></p> <p>AVAILABLE STYLES 100, 101, 800, 500, 504, 400</p>	<p><b>SPECIAL ORDER</b></p>  <p><b>FUI1</b></p> <p>Florida International Panthers</p> <p>AVAILABLE COLOR <b>NAVY</b></p> <p>AVAILABLE STYLES 100, 101, 800, 500, 504, 400</p>	<p><b>SPECIAL ORDER</b></p>  <p><b>FSU1</b></p> <p>Florida State Seminoles</p> <p>AVAILABLE COLOR <b>BLACK</b></p> <p>AVAILABLE STYLES 100, 101, 800, 500, 504, 400</p>	<p><b>SPECIAL ORDER</b></p>  <p><b>FSU2</b></p> <p>Florida State Seminoles</p> <p>AVAILABLE COLOR <b>BLACK</b></p> <p>AVAILABLE STYLES 100, 101, 800, 500, 504, 400</p>	<p><b>SPECIAL ORDER</b></p>  <p><b>FRST2</b></p> <p>Fresno State Bulldogs</p> <p>AVAILABLE COLOR <b>NAVY</b></p> <p>AVAILABLE STYLES 100, 101, 800, 500, 504, 400</p>
<p><b>SPECIAL ORDER</b></p>  <p><b>FRST1</b></p> <p>Fresno State Bulldogs</p> <p>AVAILABLE COLOR <b>RED</b></p> <p>AVAILABLE STYLES 100, 101, 800, 500, 504, 400</p>	<p><b>SPECIAL ORDER</b></p>  <p><b>GTH1</b></p> <p>Georgetown Hoyas</p> <p>AVAILABLE COLOR <b>NAVY</b></p> <p>AVAILABLE STYLES 100, 101, 800, 500, 504, 400</p>	<p><b>SPECIAL ORDER</b></p>  <p><b>GTH2</b></p> <p>Georgetown Hoyas</p> <p>AVAILABLE COLOR <b>NAVY</b></p> <p>AVAILABLE STYLES 100, 101, 800, 500, 504, 400</p>	<p><b>SPECIAL ORDER</b></p>  <p><b>GTY1</b></p> <p>Georgia Tech Yellow Jackets</p> <p>AVAILABLE COLOR <b>NAVY</b></p> <p>AVAILABLE STYLES 100, 101, 800, 500, 504, 400</p>	<p><b>SPECIAL ORDER</b></p>  <p><b>HOU1</b></p> <p>Houston Cougars</p> <p>AVAILABLE COLOR <b>RED</b></p> <p>AVAILABLE STYLES 100, 101, 800, 500, 504, 400</p>	<p><b>SPECIAL ORDER</b></p>  <p><b>IUA2</b></p> <p>Iowa Hawkeyes</p> <p>AVAILABLE COLOR <b>BLACK</b></p> <p>AVAILABLE STYLES 100, 101, 800, 500, 504, 400</p>	<p><b>SPECIAL ORDER</b></p>  <p><b>IUA3</b></p> <p>Iowa Hawkeyes</p> <p>AVAILABLE COLOR <b>BLACK</b></p> <p>AVAILABLE STYLES 100, 101, 800, 500, 504, 400</p>

**SPECIAL ORDER**



**HOPKINS**  
John Hopkins  
Blue Jays

AVAILABLE COLOR  
**BLACK**  
AVAILABLE STYLES  
100, 101, 800, 500,  
504, 400

**SPECIAL ORDER**



**WILDCATS**  
Kentucky  
Wildcats

AVAILABLE COLOR  
**BLACK**  
AVAILABLE STYLES  
100, 101, 800, 500,  
504, 400

**SPECIAL ORDER**



**LOUISVILLE**  
Louisville  
Cardinals

AVAILABLE COLOR  
**BLACK**  
AVAILABLE STYLES  
100, 101, 800, 500,  
504, 400

**SPECIAL ORDER**



**LOUISIANA TECH**  
Louisiana Tech  
Bulldogs

AVAILABLE COLOR  
**ROYAL**  
AVAILABLE STYLES  
100, 101, 800, 500,  
504, 400

**SPECIAL ORDER**



**MARQUETTE**  
Marquette  
Golden Eagles

AVAILABLE COLOR  
**NAVY**  
AVAILABLE STYLES  
100, 101, 800, 500,  
504, 400

**SPECIAL ORDER**



**MARYLAND**  
Maryland  
Terrapins

AVAILABLE COLORS  
**BLACK**  
AVAILABLE STYLES  
100, 101, 800, 500,  
504, 400

**SPECIAL ORDER**



**MEMPHIS**  
Memphis  
Tigers

AVAILABLE COLOR  
**ROYAL**  
AVAILABLE STYLES  
100, 101, 800, 500,  
504, 400

**SPECIAL ORDER**



**MIAMI**  
Miami  
Hurricanes

AVAILABLE COLOR  
**BLACK**  
AVAILABLE STYLES  
100, 101, 800, 500,  
504, 400

**SPECIAL ORDER**



**MICHIGAN**  
Michigan  
Wolverines

AVAILABLE COLOR  
**NAVY**  
AVAILABLE STYLES  
100, 101, 800, 500,  
504, 400

**SPECIAL ORDER**



**MIDDLE TENNESSEE**  
Middle Tennessee  
Blue Raiders

AVAILABLE COLORS  
**PEWTER & ROYAL**  
AVAILABLE STYLES  
100, 101, 800, 500,  
504, 400

**SPECIAL ORDER**



**MINNESOTA**  
Minnesota  
Golden Gophers

AVAILABLE COLOR  
**MAROON**  
AVAILABLE STYLES  
100, 101, 500, 504

**SPECIAL ORDER**



**MONTANA**  
Montana  
Grizzlies

AVAILABLE COLOR  
**MAROON**  
AVAILABLE STYLES  
100, 101, 500, 504

**SPECIAL ORDER**



**MONTANA STATE**  
Montana State  
Bobcats

AVAILABLE COLOR  
**NAVY**  
AVAILABLE STYLES  
100, 101, 800, 500,  
504, 400

**SPECIAL ORDER**



**NC STATE**  
NC State  
Wolfpack

AVAILABLE COLORS  
**BLACK**  
AVAILABLE STYLES  
100, 101, 800, 500,  
504, 400

**SPECIAL ORDER**



**NC STATE**  
NC State  
Wolfpack

AVAILABLE COLORS  
**BLACK & RED**  
AVAILABLE STYLES  
100, 101, 800, 500,  
504, 400

**SPECIAL ORDER**



**NEBRASKA**  
Nebraska  
Cornhuskers

AVAILABLE COLORS  
**BLACK & RED**  
AVAILABLE STYLES  
100, 101, 800, 500,  
504, 400

**SPECIAL ORDER**



**NORTH CAROLINA**  
North Carolina  
Tarheels

AVAILABLE COLOR  
**NAVY**  
AVAILABLE STYLES  
100, 101, 800, 500,  
504, 400

**SPECIAL ORDER**



**NORTH DAKOTA STATE**  
North Dakota State  
Bison

AVAILABLE COLOR  
**PINE**  
AVAILABLE STYLES  
100, 101, 800, 500,  
504, 400

**SPECIAL ORDER**



**NORTHERN IOWA**  
Northern Iowa  
Panthers

AVAILABLE COLOR  
**GRAPE**  
AVAILABLE STYLES  
100, 101, 800, 500,  
504, 400

**SPECIAL ORDER**



**OHIO**  
Ohio  
Bobcats

AVAILABLE COLOR  
**PINE**  
AVAILABLE STYLES  
100, 101, 800, 500,  
504, 400

**SPECIAL ORDER**



**OKLAHOMA**  
Oklahoma  
Sooners

AVAILABLE COLOR  
**BLACK**  
AVAILABLE STYLES  
100, 101, 800, 500,  
504, 400

**SPECIAL ORDER**



**OREGON STATE**  
Oregon State  
Beavers

AVAILABLE COLOR  
**BLACK**  
AVAILABLE STYLES  
100, 101, 800, 500,  
504, 400

**SPECIAL ORDER**



**PENN STATE**  
Penn State  
Nittany Lions

AVAILABLE COLOR  
**PEWTER**  
AVAILABLE STYLES  
100, 101, 800, 500,  
504, 400

**SPECIAL ORDER**



**RUTGERS**  
Rutgers  
Scarlett Knights

AVAILABLE COLOR  
**BLACK**  
AVAILABLE STYLES  
100, 101, 800, 500,  
504, 400

**SPECIAL ORDER**



**RUTGERS**  
Rutgers  
Scarlett Knights

AVAILABLE COLOR  
**RED**  
AVAILABLE STYLES  
100, 101, 800, 500,  
504, 400

**SPECIAL ORDER**



**SAN DIEGO STATE**  
San Diego State  
Aztecs

AVAILABLE COLORS  
**BLACK & RED**  
AVAILABLE STYLES  
100, 101, 800, 500,  
504, 400

**SPECIAL ORDER**



**SOUTH FLORIDA**  
South Florida  
Bulls

AVAILABLE COLOR  
**BLACK**  
AVAILABLE STYLES  
100, 101, 800, 500,  
504, 400

**SPECIAL ORDER**



**SOUTH FLORIDA**  
South Florida  
Bulls

AVAILABLE COLOR  
**HUNTER**  
AVAILABLE STYLES  
100, 101, 800, 500,  
504, 400

**SPECIAL ORDER**



**TCU**  
TCU  
Horned Frogs

AVAILABLE COLOR  
**GRAPE**  
AVAILABLE STYLES  
100, 101, 800, 500,  
504, 400

**SPECIAL ORDER**



**TCU**  
TCU  
Horned Frogs

AVAILABLE COLORS  
**BLACK & PEWTER**  
AVAILABLE STYLES  
100, 101, 800, 500,  
504, 400

**SPECIAL ORDER**



**TEMPLE**  
Temple  
Owls

AVAILABLE COLOR  
**CARDINAL**  
AVAILABLE STYLES  
100, 101, 800, 500,  
504, 400

**SPECIAL ORDER**



**TEXAS STATE**  
Texas State  
Bobcats

AVAILABLE COLOR  
**MAROON**  
AVAILABLE STYLES  
100, 101, 800, 500,  
504, 400

**SPECIAL ORDER**



**UCONN**  
UConn  
Huskies

AVAILABLE COLOR  
**NAVY**  
AVAILABLE STYLES  
100, 101, 800, 500,  
504, 400

**SPECIAL ORDER**



**UTAH**  
Utah  
Utes

AVAILABLE COLOR  
**BLACK**  
AVAILABLE STYLES  
100, 101, 800, 500,  
504, 400

**SPECIAL ORDER**



**UTSA**  
UTSA  
Roadrunners

AVAILABLE COLOR  
**NAVY**  
AVAILABLE STYLES  
100, 101, 800, 500,  
504, 400

**SPECIAL ORDER**



**VILLANOVA**  
Villanova  
Wildcats

AVAILABLE COLOR  
**NAVY**  
AVAILABLE STYLES  
100, 101, 800, 500,  
504, 400

**SPECIAL ORDER**



**VIRGINIA**  
Virginia  
Cavaliers

AVAILABLE COLOR  
**NAVY**  
AVAILABLE STYLES  
100, 101, 800, 500,  
504, 400

**SPECIAL ORDER**



**VIRGINIA TECH**  
Virginia Tech  
Hokies

AVAILABLE COLORS  
**ORANGE & PEWTER**  
AVAILABLE STYLES  
100, 101, 800, 500,  
504, 400

**SPECIAL ORDER**



**WAKE FOREST**  
Wake Forest  
Demon Deacons

AVAILABLE COLOR  
**BLACK**  
AVAILABLE STYLES  
100, 101, 800, 500,  
504, 400

**SPECIAL ORDER  
LICENSED SCHOOLS  
CONTINUED ON  
THE NEXT PAGE**

# WONDERWINK COLLEGIATE SCRUBS

# SPECIAL ORDER LICENSED SCHOOLS (CONTINUED)

**SPECIAL ORDER GUIDE**

Logo Code  
Logo Available  
School

The following selection is only available as special order. Lead times, pricing and minimums will vary. Please contact us if you are interested in a school that is not listed. Returns are not available for special order items.

<p><b>SPECIAL ORDER</b></p> <p>Washington State Cougars</p> <p>AVAILABLE COLOR <b>PEWTER</b></p> <p>AVAILABLE STYLES 100, 101, 800, 500, 504, 400</p>	<p><b>SPECIAL ORDER</b></p> <p>Weber State Wildcats</p> <p>AVAILABLE COLOR <b>GRAPE</b></p> <p>AVAILABLE STYLES 100, 101, 800, 500, 504, 400</p>	<p><b>SPECIAL ORDER</b></p> <p>West Virginia Mountaineers</p> <p>AVAILABLE COLOR <b>GOLD</b></p> <p>AVAILABLE STYLES 100, 101, 800, 500, 504, 400</p>	<p><b>SPECIAL ORDER</b></p> <p>Wisconsin Badgers</p> <p>AVAILABLE COLOR <b>BLACK</b></p> <p>AVAILABLE STYLES 100, 101, 800, 500, 504, 400</p>	<p><b>SPECIAL ORDER</b></p> <p>Wisconsin Badgers</p> <p>AVAILABLE COLOR <b>RED</b></p> <p>AVAILABLE STYLES 100, 101, 800, 500, 504, 400</p>	<p><b>SPECIAL ORDER</b></p> <p>Wisconsin Badgers</p> <p>AVAILABLE COLOR <b>WHITE</b></p> <p>AVAILABLE STYLES 100, 101, 800, 500, 504, 400</p>	<p><b>SPECIAL ORDER</b></p> <p>Wyoming Cowboys</p> <p>AVAILABLE COLORS <b>PEWTER</b></p> <p>AVAILABLE STYLES 100, 101, 800, 500, 504, 400</p>
---	--	---	---	---	---	---

## AVAILABLE COLORS

\*Not all colors are available in sizes XXS to 5XL or every style.

white WHIT	pewter PEWT	royal ROYA	pine PINE	galaxy blue GALA	chocolate CHOC	garnet GARN	cardinal CARD	orange ORAN	gold GOLD
black BLAC	navy NAVY	cell blue CEIL	hunter HUNT	grape GRAP	maroon MARN	burgundy BURG	red REDT	light orange LTOR	

We offer a wide selection of colors in our line, but sometimes you need a specific shade. If your school has a specific PMS color, we will match the exact shade of your choice. Our attention to quality guarantees you obtain consistent, repeatable results with every order.

## COLLEGIATE PROGRAM EXCLUSIVE COLORS

	100	101	500	500S	500T	504	504P	504T	800	400
<b>Burgundy</b>	XS-3X	XXS-3X	XS-3X	Not Available	XST-XLT	XXS-2X	Not Available	XST-XLT	XS-3X	One Size
<b>Cardinal</b>	XS-5X	XXS-5X	XS-5X	XSS-3XS	XST-3XT	XS-5X	XSP-3XP	XST-3XT	XXS-3X	One Size
<b>Garnet</b>	XS-3X	XXS-3X	XS-3X	Not Available	XST-XLT	XS-3X	Not Available	SMT-3XT	XS-3X	One Size
<b>Gold</b>	XS-3X	XXS-3X	XS-3X	Not Available	Not Available	XS-3X	Not Available	Not Available	XS-3X	One Size
<b>Light Orange</b>	XS-3X	XS-3X	XS-3X	Not Available	Not Available	XS-3X	Not Available	Not Available	XS-3X	One Size
<b>Maroon</b>	XS-5X	XXS-5X	XS-5X	XSS-3XS	XST-3XT	XS-5X	XSP-3XP	XST-3XT	XXS-3X	One Size
<b>Orange</b>	XS-3X	XXS-3X	XS-3X	Not Available	XST-XLT	XS-3X	Not Available	XST-XLT	XS-3X	One Size
<b>Pine</b>	XS-3X	XXS-3X	XS-3X	Not Available	XST-XLT	XS-3X	Not Available	XST-XLT	XS-3X	One Size



# 100

Unisex  
V-Neck Top



Unisex Fit  
65% Polyester / 35% Cotton

- One double chest pocket with utility loop.
- Vented sides.

XXS - 5X  
(Size M length: 27¾")

# 101

Women's  
V-Neck Top



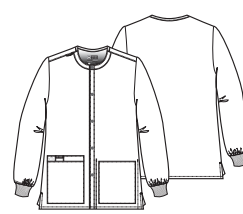
Women's Classic Fit and True-Plus Fit  
65% Polyester / 35% Cotton

- Two front lower pockets with utility loop, one pen slot, and one cell phone pocket.
- Soft line V-neck shape.
- Vented sides.

XXS - 5X  
(Size M length: 28 ¼")

# 800

Unisex  
Snap Front Jacket



Unisex Fit  
65% Polyester / 35% Cotton

- Two front lower pockets with utility loop, one pen slot, one cell phone pocket, and one inside tablet pocket.
- Soft rib knit cuffs.
- Easy front snap closure.
- Vented sides.

XXS - 5X  
(Size M length: 29¾")

# 7106

Unisex  
Origins Lab Coat



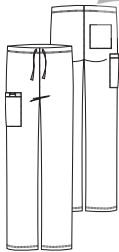
Unisex Fit  
65% Polyester / 35% Cotton

- Two front lower pockets including one WonderWink signature triple pocket with hidden mesh pocket and signature ID bungee loop, one scissors pocket at wearer's left side, and one chest pocket with pen slot.
- Vented back.

XXS - 5X  
Long: XS - 5X  
(Size M length: 33 ½", Long-35 ½")

# 500

Unisex  
Drawstring Cargo Pant



Straight Leg

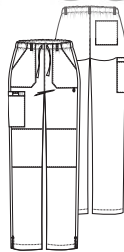
Unisex Fit  
65% Polyester / 35% Cotton

- Natural rise with a full drawstring waist.
- One cargo pocket with utility loop, one pen slot one cell phone pocket, and one back pocket.

XXS - 5X  
Short: XXS - 3X  
Tall: XS - 3X  
(Size M leg opening: 9")

# 504

Women's  
Straight Leg Cargo Pant



Straight Leg

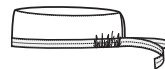
Women's Classic Fit and True-Plus Fit  
65% Polyester / 35% Cotton

- Full elastic waist with full adjustable drawstring, front rise sits slightly below natural waist with back rise being a bit higher for more coverage, five belt loops at waist.
- Two front slash pockets, one back patch pocket, and one double cargo pocket with pen slot and utility loop.
- Signature ID bungee loop at left pocket.
- Vented bottom.

XXS - 5X  
Petite: XXS - 3X  
Tall: XS - 3X  
(Size M leg opening: 8 ¾")

# 400

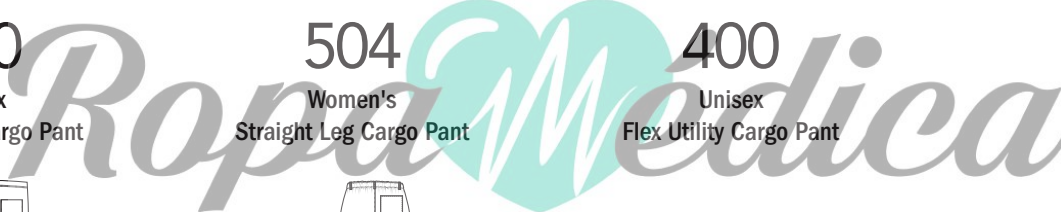
Unisex  
Flex Utility Cargo Pant



Unisex Fit  
65% Polyester / 35% Cotton

- Back tie closure, covered elastic band.
- Terry cloth sweat band inside.
- WonderWink logo at center back.

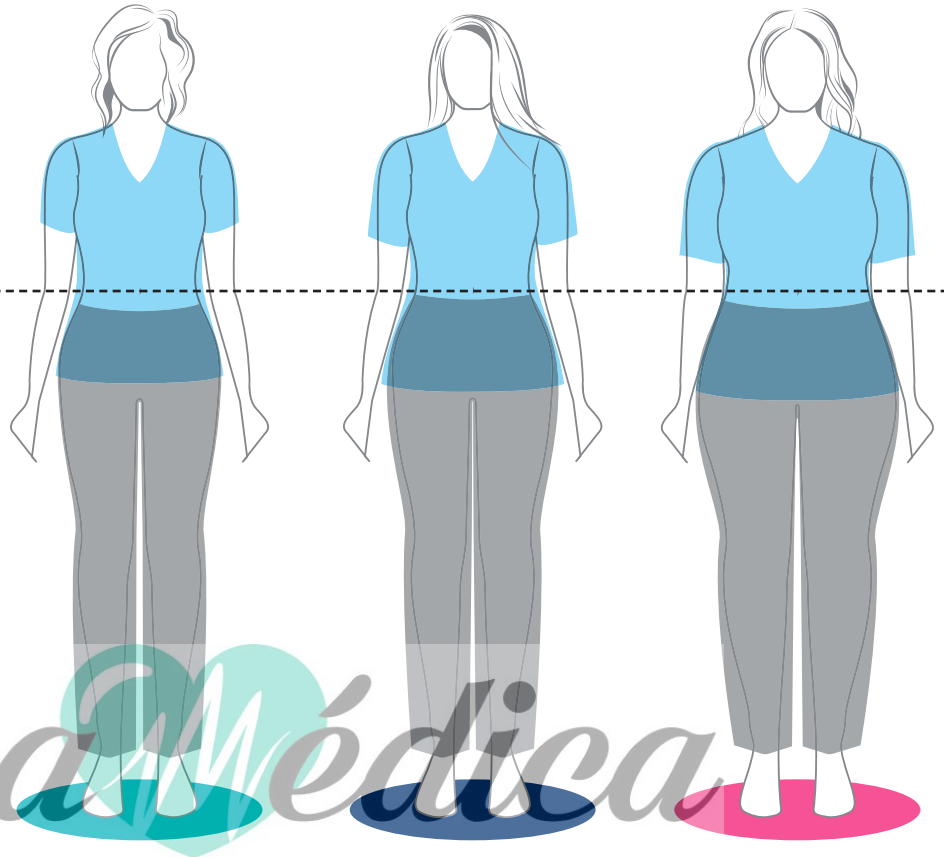
One size





# The WonderWink Fit Difference : EXPECT COMFORT

## Natural Waist



### WOMEN'S MODERN FIT:

Cut closer to your shape for a flattering and contoured look without sacrificing comfort.

### WOMEN'S CLASSIC FIT:

Lightly shaped to the body for mobility and ease of movement. Comfortable and stylish in a relaxed fit.

### WOMEN'S TRUE-PLUS FIT:

Fit exclusively for curvy shapes. Comfortable, flattering and unrestricted for an effortless look and feel.

**WOMEN'S  
MODERN FIT**

**WOMEN'S  
CLASSIC FIT**

**WOMEN'S  
TRUE-PLUS FIT**

Women's Modern Fit	XXS	XS	S	M	L	XL
<b>Ready-to-Wear</b>	0	2	4-6	8-10	12-14	16-18
<b>Bust</b>	30-31	32-33	34-35	36-38	39-42	43-46
<b>Waist</b>	22-23	24-25	26-27	28-30	31-34	35-38
<b>Hip</b>	32-33	34-35	36-37	38-40	41-44	45-48

Inseam: Regular-31", Petite-28 ½", Tall-33"

Women's Classic Fit	XXS	XS	S	M	L	XL
<b>Ready-to-Wear</b>	0	2	4-6	8-10	12-14	16-18
<b>Bust</b>	31-32	33-34	35-36	37-39	40-43	44-47
<b>Waist</b>	23-24	25-26	27-28	29-31	32-35	36-39
<b>Hip</b>	33-34	35-36	37-38	39-41	42-45	46-49

Inseam: Regular-31", Petite-28 ½", Tall-33"

Women's True-Plus Fit	1X	2X	3X	4X	5X
<b>Ready-to-Wear</b>	17-18	20-22	24-26	28-30	32-34
<b>Bust</b>	46-47	48-51	52-55	56-59	60-64
<b>Waist</b>	38-39	40-43	44-47	48-51	52-56
<b>Hip</b>	48-49	50-53	54-57	58-61	62-66

Inseam: Regular-31", Petite-28 ½", Tall-33"

**How to take your measurements:**

**BUST/ CHEST** Exhale, then measure under your armpits, around the fullest part of your chest and shoulder blades.

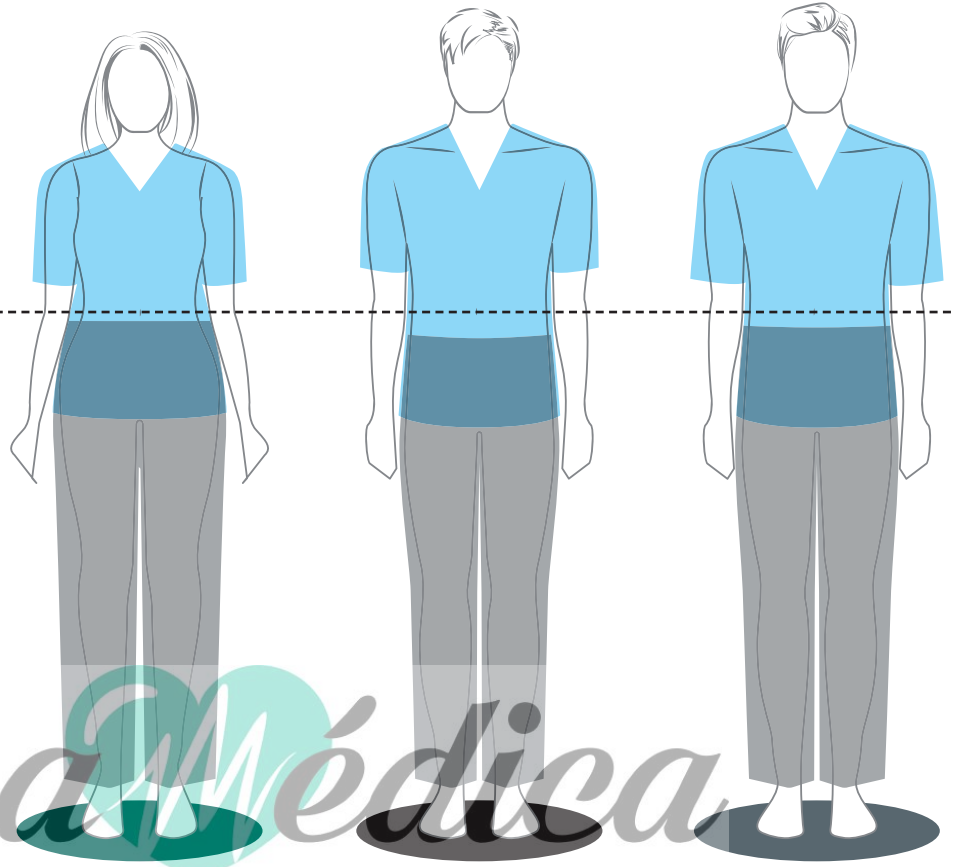
**LENGTH** We recommend Petites for women up to 5'2", Regular length up to 5'6", and Tall length for 5'7" and above / Short for men up to 5'7", Regular length up to 5'9", and Tall length for 6' and above.

**Waist** Keep the tape comfortably loose and measure around your natural waistline which is the point where you bend side to side.

**Hip** Standing with your feet slightly apart, measure around the fullest part of your hips. Approximately 8" below your waist.

**Inseam** Measure from the crotch to the bottom of the leg.

*Natural Waist*



**UNISEX FIT:**

Relaxed and roomy to accommodate a full range of shapes and sizes.

**MEN'S MODERN FIT:**

Built for a man, this garment is cut slimmer to the body for a more modern, tailored shape.

**MEN'S CLASSIC FIT:**

Cut looser and more relaxed for an unrestricted fit and a full range of movement.

**UNISEX FIT**

**MEN'S MODERN FIT**

**MEN'S CLASSIC FIT**

Unisex Fit	XXS	XS	S	M	L	XL	2X	3X	4X	5X
<b>Chest/Bust</b>	31-32	33-34	35-37	38-40	41-44	45-48	49-52	53-56	57-60	61-64
<b>Waist</b>	23-24	25-26	27-29	30-32	33-36	37-40	41-44	45-48	49-52	53-57
<b>Hip</b>	32-33	34-35	36-38	39-41	42-45	46-49	50-53	54-57	58-61	62-65

Inseam: Regular-31", Petite/Short-28 1/2", Tall-33"

Men's Modern Fit	XS	S	M	L	XL	2X	3X	4X	5X
<b>Chest</b>	33-35	36-38	39-41	42-44	45-48	49-52	53-56	57-60	61-64
<b>Waist</b>	24-26	27-29	30-32	33-35	36-39	40-43	44-47	48-51	52-55
<b>Hip</b>	33-35	36-38	39-41	42-44	45-48	49-52	53-56	57-60	61-64

Inseam: Regular-31", Short-28 1/2", Tall-34"

Men's Classic Fit	XS	S	M	L	XL	2X	3X	4X	5X
<b>Chest</b>	35-36	37-39	40-42	43-45	46-49	50-53	54-57	58-61	62-65
<b>Waist</b>	25-27	28-30	31-33	34-36	37-40	41-44	45-48	49-52	53-56
<b>Hip</b>	34-36	37-39	40-42	43-45	46-49	50-53	54-57	58-61	62-65

Inseam: Regular-31", Short-28 1/2", Tall-34"